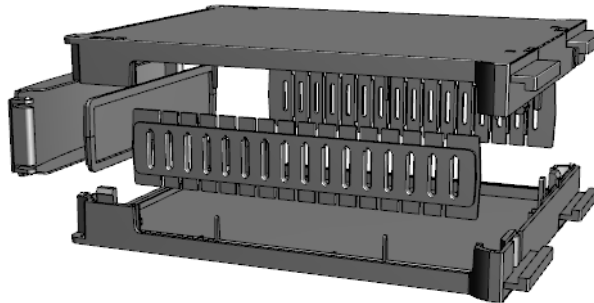
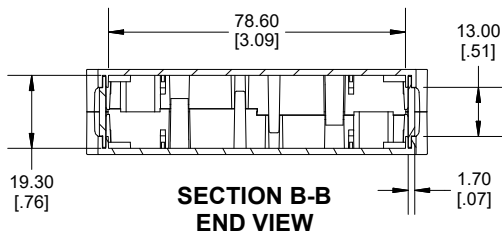
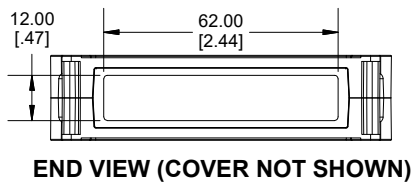
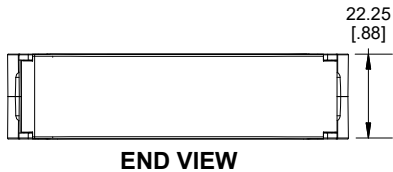


**SECTION C-C
TOP VIEW**



Enclosures can be Factory Modified (Milling, Drilling, Printing etc.)
Contact Factory (modshop@hammfg.com) for quotes
Solid models of this enclosure available in .stp or .x_t
(Part number and text placement/orientation on our products are subject to change,
we do not recommend using them as a locating reference for modification purposes)

NOTE

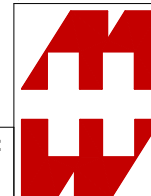
Purchased enclosure includes base, cover, front panel,
front cover and 2 side panels.
Enclosure is made from polycarbonate.

PART NUMBERS

1597DIN

Rail enclosure grey

1597DINM22GY



**HAMMOND
MANUFACTURING®**

1597DINM22

www.hammondmfg.com

Dimensions:
mm
[inches]