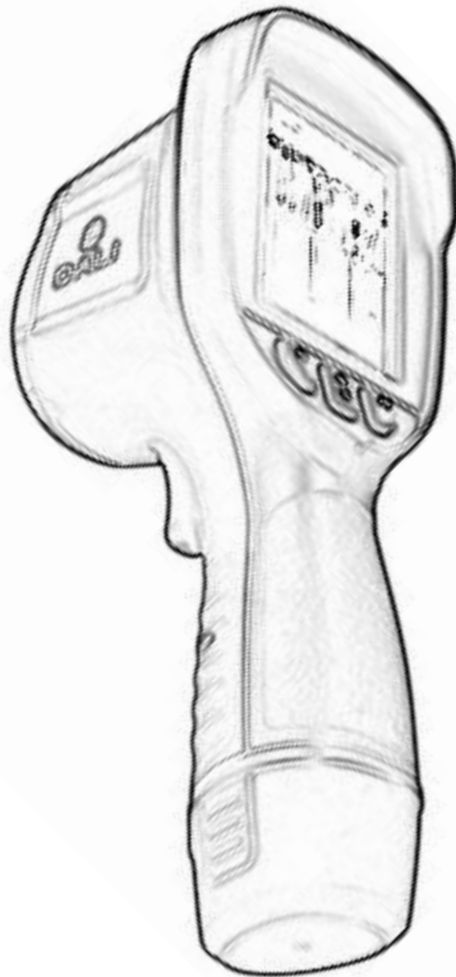


T1

Thermal Image Camera

Quick Start Guide



ZHEJIANG DALI TECHNOLOGY CO LTD

© 2016 DALI TECHNOLOGY

1. Buttons Function



[1] Power/Menu	a) Press and hold 3+ second to turn / off the device. b) Enter into the menu mode and select / confirm the settings
[2] F1 Select	Select Left/Up under the menu mode.
[3] F2 Select	Select Right/Down under the menu mode.
[4] Freeze /Back	a) Press to freeze the screen when imaging. b) Press and hold to make calibration. c) Press to Cancel / Back under the menu mode.
[5] USB interface	a) Connect with PC to transfer data [USB2.0]; b) Charge the battery.
[6] Buzzer	Make buzzer to alarm.
[7] Microphone	To make voice note when saving imaging.
[8] Indicator light	a) Green color when device turned on; b) Red color when charging battery then turn green when fully charged.

! Attention: We suggest to wait at least 10 secs to turn on the device since turned off, that will be helpful to protect the device working well.

2. Operation

2.1 Load battery

Push the battery into the battery compartment until hear the sound, then the device will be ready to be turned on. Please hold both side of the battery when pulling it out.



2.2 Obtain Thermal Imaging

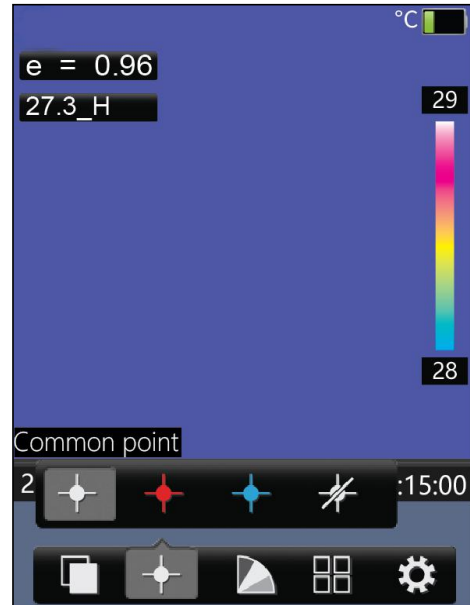
- Load the battery then press the power button (about 3 secs) until the screen imaging. The device will be finish the initialization and get ready to work after about 30 secs.
- Open the lens cover and aim at the target.



! Attention: Please press and hold the Freeze/Back button to make calibration if the imaging has bad quality or retention.

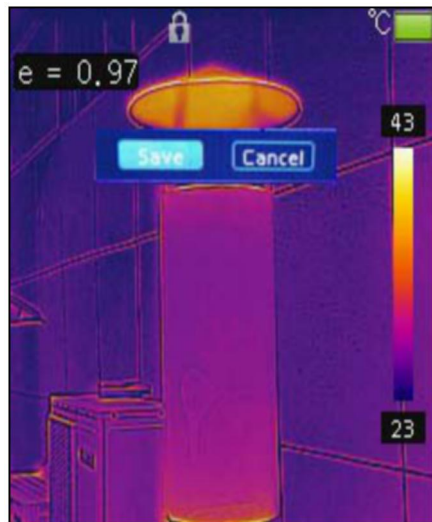
2.3 Measure Temperature

- Press Menu Button to change the measure point then aim the cursor to the target, then the target temperature will be shown at the top-left of the screen.
- The temperature will be shown as “>XXX°C” or “<XXX°C” when the target temperature is higher/lower than the selected temperature range.
[XXX=temperature range]



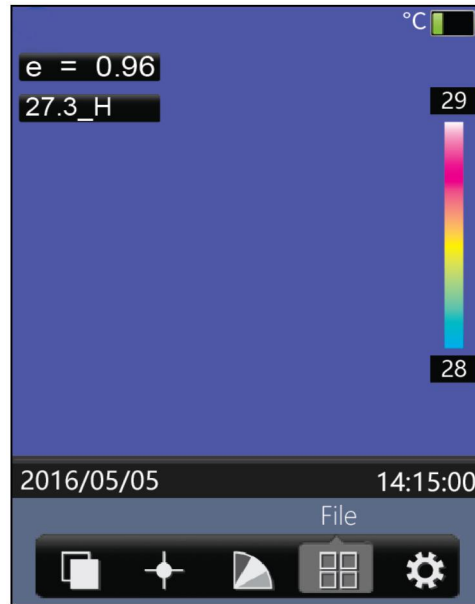
2.4 Freeze and save imaging

Press Freeze/Back button to freeze the screen, then save the imaging. Select cancel and confirm to back to imaging mode. The Voice annotation notice will be on the screen when saving the imaging if the voice annotation function turned on.



2.5 Playback

- Select "File" icon in menu.
- Press F1、F2 button to select different saved imaging.
- Press Freeze/Back button to exit Playback and enter imaging mode.



2.6 Export saved imaging

Connect device to PC by USB cable to export saved imaging.



3. Specification

Item		Specification
		T1
Detector	Type	Uncooled FPA
	Resolution	120x120
	Spectral range	8-14um
	Frame rate	50 Hz
	Thermal sensitivity	0.06°C@30°C
Lens	FOV	33° x33°
	Focus range	0.5m~∞
	Focus method	Focus-free
Image	Spatial resolution	5mrad
	Visual light lens	Yes
Image display	LCD	3.2" TFT LCD, 240x320
	Color palette	4 color
	Image display	IR and visual image changed fast, Dual band image enhancement processing
	Image adjustment	Auto
Measurement	Measurement range	-20°C~ +250°C
	accuracy	±2°C or ±2%
	Measurement correction	Auto
	Measurement mode	Fixed center, screen max/min temperature, temperature alarm(voice ,color)
	Emissivity correction	Variable from 0.01 to 1.0
	Setup function	Date/time/format, temperature unit°C/°F/K, language
Image storage	storage card	Built-in memory, up to 5000 images
	Storage method	Manual, Auto single file saving, IR and visual image fusion saving
	Image format	JPEG format, with the original thermal data included
	Voice annotation	60 seconds (saving with thermal image)
Power supply system	Battery	Li-Ion, rechargeable
	Battery operating time	3 hours continuous operation
	Battery charging mode	Random charge with USB slot
	Power saving	Auto dormancy, auto-shut down
Interface	Power interface	Mini-USB
	Date transmission	Mini-USB

Environment	Operating temperature	-15°C~+50°C
	Storage temperature	-25°C~+60°C
	Humidity	≤90%
	Encapsulation	IP54
	Anti-shock	25G, IEC68-2-29
	Anti-vibration	2G, IEC68-2-6
	Drop	1.5meter
Safety specification	Electromagnetic compatibility	Meet to the standards of CE certification
Physical characteristic	Dimension	240*88*135mm (H*W*D)
	Weight (with battery)	510g