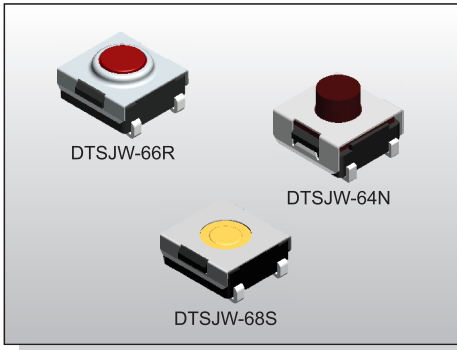


TACT SWITCH DTSJW-6 SERIES

6x6 J SMT
Washable Type IP67



FEATURES

- ✘ Sealed IP67
- ✘ Reflow solderable
- ✘ Dust proof with high reliability

APPLICATION

- ✘ Audio, OA equipment
- ✘ Instrumentation, Communication
- ✘ White goods

SPECIFICATION

Contact Rating	50mA, 12V DC
Contact Resistance	100mΩ max.
Insulation Resistance	100MΩ min. 500V DC
Dielectric Strength	250V AC/1 minute
Operating Force	160±50gf, Brown(N) 66/677 160±50gf, Silver(S) 68 180±50gf, Brown(N) 69/67/65/64 260±70gf, Red(R) 69/67/66/65/64 360±90gf, Transparent(T) 69/67/65/677
Travel	0.25mm 68S/66N/66R/677 0.45mm (69/67N,R)(65/64N,R,T) 0.6mm 69/67T
Operating Life	100,000 cycles min. for 68/66/677 500,000 cycles min. for 69/67/65/64
Operating Temp.	-25°C ~ +70°C
Storage Temp.	-30°C ~ +80°C

HOW TO ORDER

D T S J W - 6 □ □ - □ □ - □ □

J S.M.T.(J Bend)

Washable

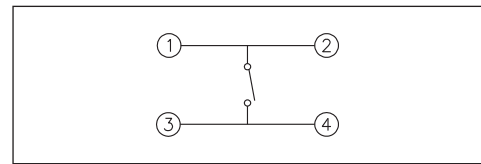
Dimension H:
4=4.5mm (N, R)
5=3.5mm (N, R, T)
6=3.1mm (N, R)
7=5.2mm (N, R, T)
77=7.3mm (N, T)
8=2.3mm (S)
9=3.8mm (N, R, T)

Package:
B=Tube
T/R=Tape & Reel

V=RoHS & Lead Free Solderable
Q=Halogen Free

Operating Force:
N=Brown, 160gf(66N, 677N)
180gf(69N, 67N, 65N, 64N)
S=Silver, 160gf(68S)
R=Red, 260gf(69R, 67R, 66R, 65R, 64R)
T=Transparent, 360gf (69T, 67T, 65T, 677T)

CIRCUIT



PACKAGE

<Tube>

75 pcs

<Tape & Reel>

DTSJW-64, 67: 900 pcs

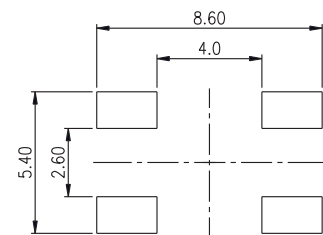
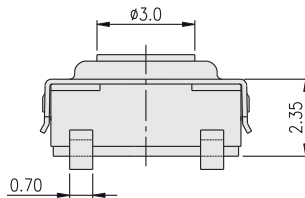
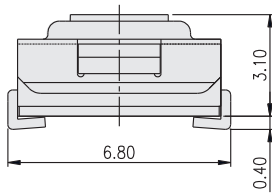
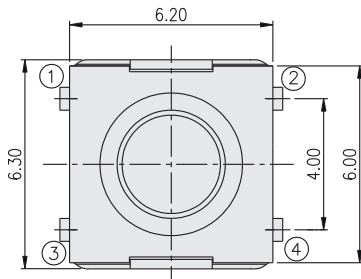
DTSJW-65, 69: 1800 pcs

DTSJW-66: 1900 pcs

DTSJW-68: 2700 pcs

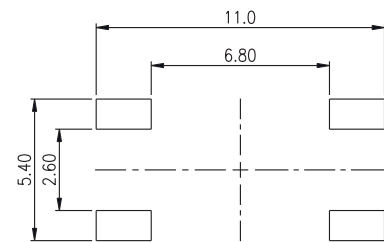
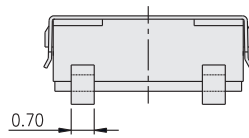
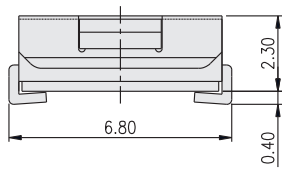
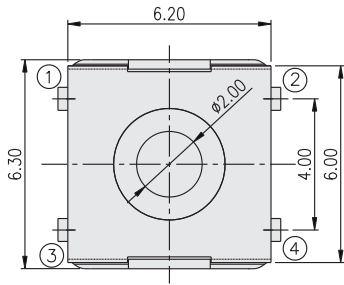
DTSJW-677: 650 pcs

DTSJW-66



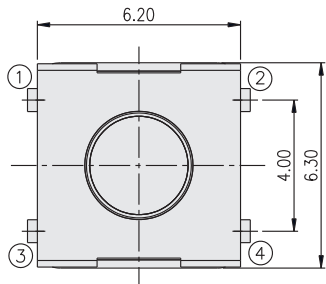
P.C.B. LAYOUT

DTSJW-68

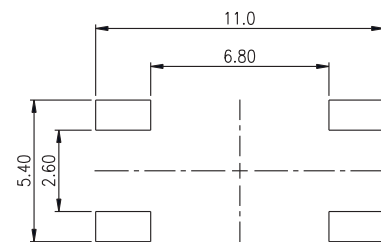
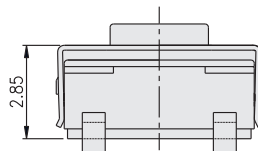
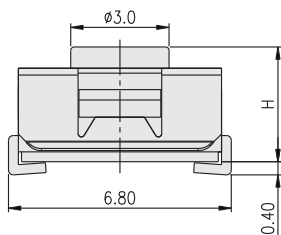


P.C.B. LAYOUT

DTSJW-6□



PART NO.	H
DTSJW-64	4.50
DTSJW-65	3.50
DTSJW-67	5.20
DTSJW-69	3.80
DTSJW-677	7.30



P.C.B. LAYOUT