

LOCK SWITCH

RAL LOCK SWITCH WITH A ROTARY SWITCH MODULE

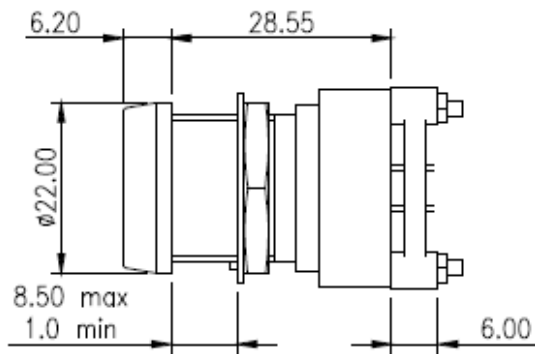
ELECTRICAL & MECHANICAL SPECIFICATION

Switch Rating: (Resistive load only)	150mA @ 250V ac/dc 350mA @ 110V ac/ dc 1A @ 12V ac/dc	Life:	>10,000 Cycles
Proof Voltage:	1,000V ac (Initial)	Operating Temperature:	-30°C to +85°C
Insulation Resistance:	>999 MΩ at 500V dc (Initial)	Operating Torque (nominal):	7.2Nm
Contact Resistance	<20 mΩ (Initial)	End Stop Torque (nominal):	1.2Nm
Contact/Terminal Material:	Brass CZ108 Ag Plated	Lock Housing Material:	Zinc Alloy Bright Cr Plated
		Keys Material:	Mild Steel Ni Plated
		Wafer Material:	Polyphenylene Sulphide (PPS)

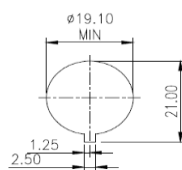
FEATURES

Single or Multi wafer	2 keys per switch as standard	Non-shorting BBM (break before make) or Shorting MBB (make before break)	Two stage assembly: lock inserted from the inside and the lock bezel screws on from the front to secure the assembly
Up to 5 poles per switch	Key inserted/removeable 60° or 90°	60° or 90° switch indexing	Max panel thickness 8.5mm
Solder or PCB terminals	Common or differ keys	5-disc lock	
Silver contacts	200 combinations		
Gold flashed or gold plated also available	Master key system available		

SINGLE WAFER RAL LOCKSWITCH



PANEL PIERCING



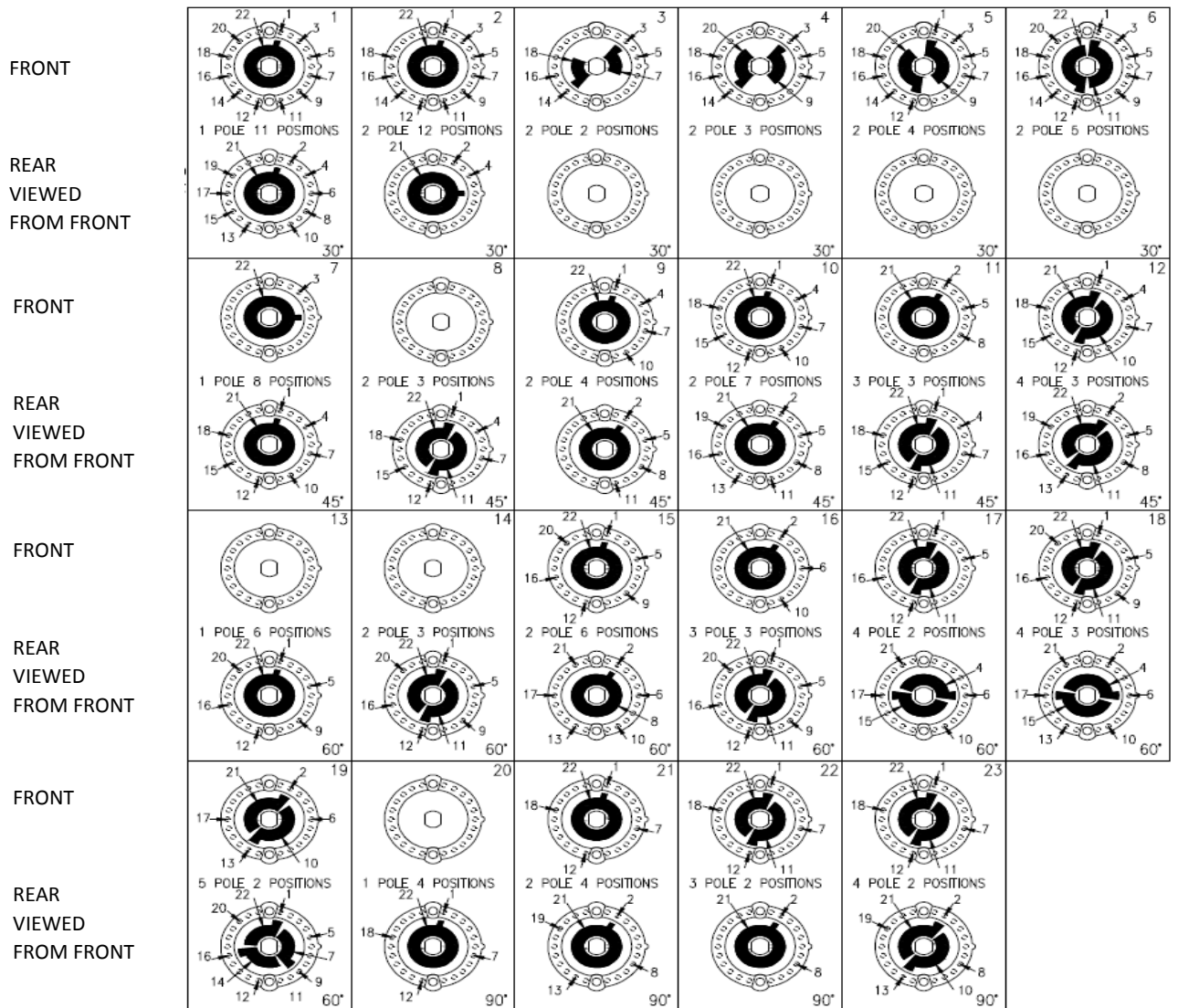
LOCK MOVEMENT DESC.



STANDARD CIRCUITRY AND KEY WITHDRAWAL POSITIONS

INDEXING ANGLE	STANDARD CIRCUITS NON SHORTING CONTACTS SOLDER TERMINALS						TOTAL SWITCH MOVEMENT	KEY FREE POSITIONS				
	1 POLE	2 POLE	3 POLE	4 POLE	5 POLE	6 POLE		KRA	5RAL (200KEY DIFFERS)		8RAL (200KEY DIFFERS)	
								(200KEY DIFFERS) (KEY FREE 60° STEPS)	-001 (KEY FREE 90° STEPS)	-002 (KEY FREE 60° STEPS)	-001 (KEY FREE 90° STEPS)	-002 (KEY FREE 60° STEPS)
30°	2 WAY	2 WAY	2 WAY	2 WAY	2 WAY	2 WAY	0°-30°	1	1		1	
	3 WAY	3 WAY	3 WAY	3 WAY	3 WAY		0°-60°	1+3	1	1+3	1	1+3
	4 WAY	4 WAY	4 WAY	4 WAY			0°-90°		1/1+4		1/1+4	
	5 WAY	5 WAY	5 WAY				0°-120°	1+3+5	1/1+4	1+3+5	1/1+4	1+3+5
	6 WAY	6 WAY					0°-150°		1/1+4		1/1+4	
	7 WAY	7 WAY					0°-180°	1+3+5+7	1+7/1+4+7	1+3+5+7	1+7/1+4+7	1+3+5+7
	8 WAY						0°-210°					
	9 WAY						0°-240°	1+3+5+7+9		1+3+5+7+9		1+3+5+7+9
	10 WAY						0°-270°		1+4+7+10		1+4+7+10	
	11 WAY						0°-300°					
	12 WAY						0°-330°					
	12 WAY						0°-360° No Stop	1+3+5+7+9+11	1+7/1+4+7+10	1+3+5+7+9+11	1+7/1+4+7+10	1+3+5+7+9+11
45°	2 WAY	2 WAY	2 WAY	2 WAY			0°-45°		1		1	
	3 WAY	3 WAY	3 WAY	3 WAY			0°-90°		1/1+4		1/1+4	
	4 WAY	4 WAY					0°-135°					
	5 WAY	5 WAY					0°-180°	1+7	1+7/1+4+7		1+7/1+4+7	
	6 WAY	6 WAY					0°-225°					
	7 WAY	7 WAY					0°-270°		1+4+7+10		1+4+7+10	
	8 WAY						0°-315°					
	8 WAY						0°-360° No Stop	1+7	1+4+7+10		1+4+7+10	
60°	2 WAY	2 WAY	2 WAY	2 WAY	2 WAY		0°-60°	1/1+3	1	1+3	1	1+3
	3 WAY	3 WAY	3 WAY	3 WAY			0°-120°	1+3+5	1	1+3+5	1	1+3+5
	4 WAY	4 WAY					0°-180°	1+3+5+7	1+7/1+4+7	1+3+5+7	1+7/1+4+7	1+3+5+7
	5 WAY	5 WAY					0°-240°	1+3+5+7+9		1+3+5+7+9		1+3+5+7+9
	6 WAY	6 WAY					0°-300°					
	6 WAY	6 WAY		2 WAY			0°-360° No Stop	1+3+5+7+9+11	1+7/1+4+7+10	1+3+5+7+9+11	1+7/1+4+7+10	1+3+5+7+9+11
90°	2 WAY	2 WAY	2 WAY				0°-90°		1/1+4		1/1+4	
	3 WAY	3 WAY					0°-180°	1+7	1+7/1+4+7		1+7/1+4+7	
	4 WAY	4 WAY					0°-270°		1+7/1+4+7+10		1+7/1+4+7+10	
	4 WAY	4 WAY					0°-360° No Stop	1+7	1+7/1+4+7+10		1+7/1+4+7+10	

TYPICAL WAFER LAYOUTS 30°, 45°, 60° AND 90°



WAFERS ABOVE ARE VIEWED FROM THE FRONT OF THE SWITCH IN THE FURTHEST COUNTER CLOCKWISE POSITION.

CIRCUITRY IS SHOWN AS BREAK BEFORE MAKE (BBM) NON-SHORTING.
MAKE BEFORE BREAK (MBB) OPTIONS ARE ALSO AVAILABLE

ORDERING CODE

