

LOCK SWITCH

SRL LOCK SWITCH

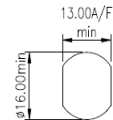
ELECTRICAL & MECHANICAL SPECIFICATION

Switch Rating:	1A @115V ac.	Life:	>10,000 Cycles
(Resistive load)	1A @24V dc	Operating Temperature:	-20°C to +65°C
Proof Voltage:	750 Vac (Initial)	Lock Type:	5 Disc
Insulation Resistance:	>999MΩ @ 500Vdc (Initial)		
Contact Resistance:	<20mΩ (Initial)	Lock Housing:	Zinc Alloy Bright Cr Plated
Contact Material:	Brass CZ108, Ag Plated	Moulding Material:	Polyamide 6.6 G.F. V0 Rated

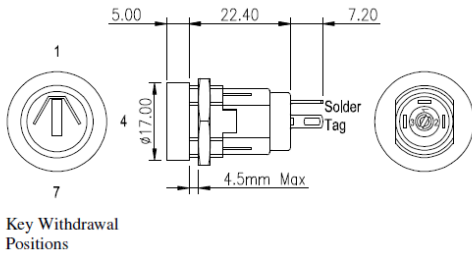
FEATURES

Front assembly	2 keys per switch	Moulded bezel available for parallel lock headed version (SRL02101)
Single or Double pole	Up to 200 differ key combinations available	Made In UK
Rear panel depth - <30mm	Keys are double entry (can be inserted into lock either way up)	

PANEL PIERCING DETAILS



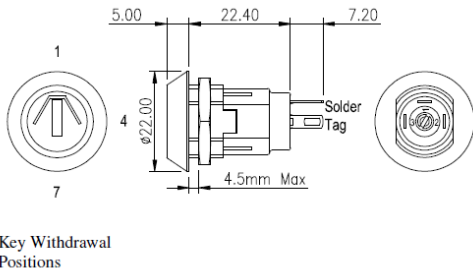
SINGLE POLE LOCK SWITCH



PARALLEL LOCK HEAD 90° INDEXING

BASIC PART No.	TOTAL MOVEMENT	INDEXING	KEY WITHDRAWAL POSITIONS	SWITCH CONFIGURATION
SRL-5-A	90°	90°	1,4	
SRL-5-B	90°	90°	1 ONLY	
SRL-5-C	180°	90°	1,4,7	
SRL-5-N	180°	90°	1,4,7	

SINGLE POLE LOCK SWITCH

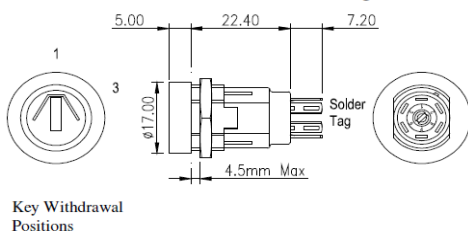


TAPERED LOCK HEAD 90° INDEXING

BASIC PART No.	TOTAL MOVEMENT	INDEXING	KEY WITHDRAWAL POSITIONS	SWITCH CONFIGURATION
SRL-5-D	90°	90°	1,4	
SRL-5-E	90°	90°	1 ONLY	
SRL-5-F	180°	90°	1,4,7	
SRL-5-P	180°	90°	1,4,7	

DOUBLE POLE LOCK SWITCH

PARALLEL LOCK HEAD 60° INDEXING

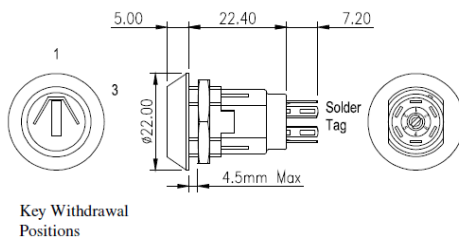


PARALLEL LOCK HEAD 60° INDEXING

BASIC PART No.	TOTAL MOVEMENT	INDEXING	KEY WITHDRAWAL POSITIONS	SWITCH CONFIGURATION
SRL-5-J	60°	60°	1,3	
SRL-5-K	60°	60°	1 ONLY	

DOUBLE POLE LOCK SWITCH

TAPERED LOCK HEAD 60° INDEXING



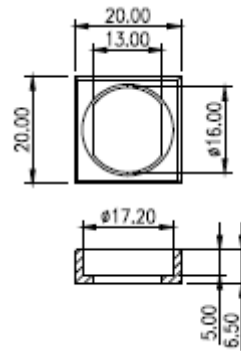
TAPERED LOCK HEAD 60° INDEXING

BASIC PART No.	TOTAL MOVEMENT	INDEXING	KEY WITHDRAWAL POSITIONS	SWITCH CONFIGURATION
SRL-5-L	60°	60°	1,3	
SRL-5-M	60°	60°	1 ONLY	

OPTIONAL MOULDED BEZEL

FOR PARALLEL LOCK HEADED VERSIONS _

PART NUMBER SRL02101



SRL ORDERING CODE

