

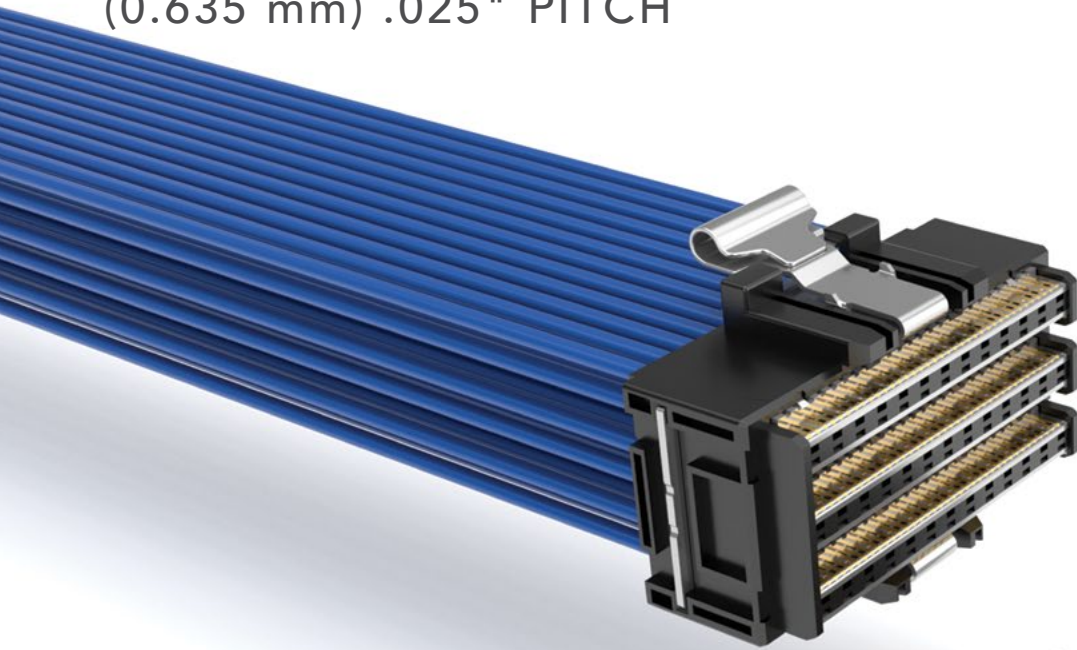
# ACCELERATE<sup>®</sup>HP

## EXTREME DENSITY CABLE-ON-SUBSTRATE

(0.635 mm) .025" PITCH

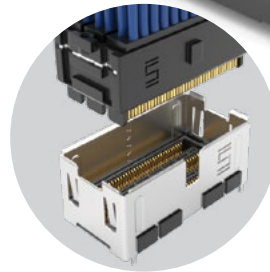
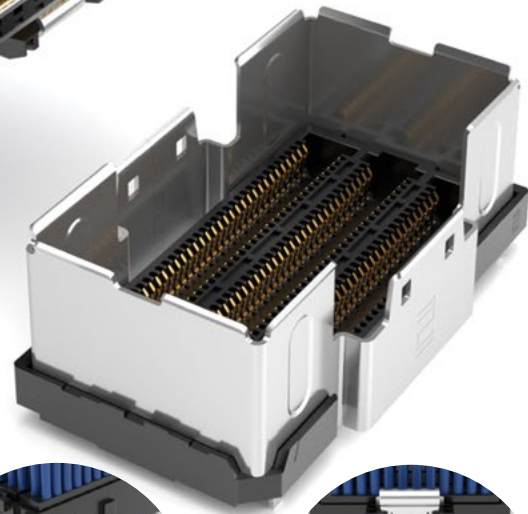
PAM4

112  
G b p s

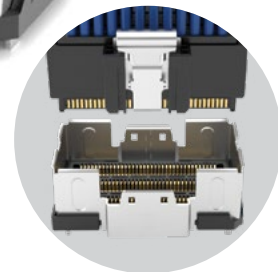


### FEATURES & BENEFITS

- Industry's highest density 112G PAM4 cable system
- BGA solder ball attach
- 34 AWG ultra-low skew twinax
- 0.635 mm contact pitch; 2.20 x 2.40 mm row-to-row pitch
- 4 to 6 rows (8 rows in development)
- Up to 96 twinax cables
- Squeeze latch or extraction tool configuration
- Single-ended micro coax configuration in development



Locking for maximum density  
(removal tool required)



Squeeze Latching

### KEY SPECIFICATIONS

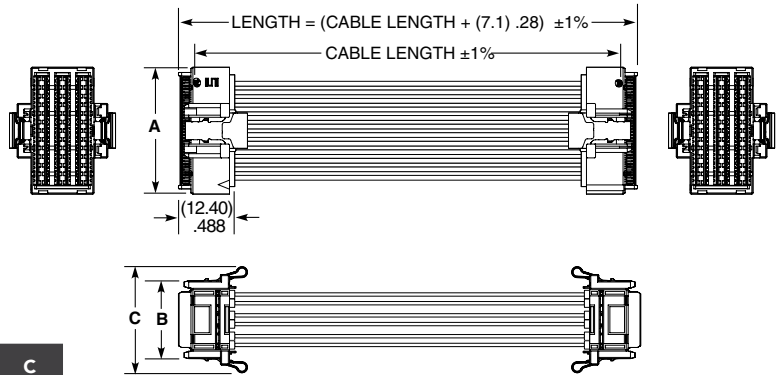
| PITCH            | CABLE                        | SIGNAL ROUTING    | INSULATOR MATERIAL | CONTACT MATERIAL | PLATING                          | OPERATING TEMP RANGE |
|------------------|------------------------------|-------------------|--------------------|------------------|----------------------------------|----------------------|
| (0.635 mm) .025" | 34 AWG ultra-low skew twinax | 92 Ω Differential | Black LCP          | Copper Alloy     | Au or Sn over 50 μ" (1.27 μm) Ni | -40 °C to +125 °C    |

**(0.635 mm) .025" • HIGH-DENSITY/PERFORMANCE CABLE**

| ARP6 | STYLE                 | NO. OF POSITIONS        | NO. OF ROWS                               | CABLE LENGTH  | END 2 ORIENTATION                 | END 1 OPTION          | END 2 OPTION          |
|------|-----------------------|-------------------------|---|---|-----------------------------------|-----------------------|-----------------------|
|      | -DP<br>= Twinax Cable | -025, -037<br>(Per Row) | -04<br>= Four Row<br><br>-06<br>= Six Row | -“XX.X”<br>= Length in Inches<br>03.0” (76.2 mm)<br>minimum | -T<br>= Top<br><br>-B<br>= Bottom | -L<br>= Squeeze Latch | -L<br>= Squeeze Latch |

PRELIMINARY

**ARP6**  
Board Mates:  
APF6-L



ARP6-DP-037-06-XX.X-B-L-L SHOWN

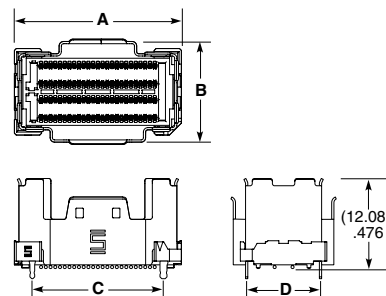
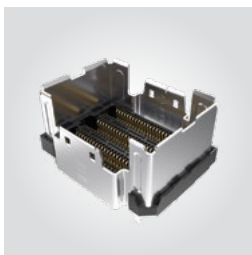
| NO. OF POSITIONS PER ROW | A             | NO. OF ROWS | B            | C            |
|--------------------------|---------------|-------------|--------------|--------------|
| -025                     | (20.34) .801  | -04         | (12.54) .494 | (18.58) .731 |
| -037                     | (27.96) 1.101 | -06         | (17.14) .675 | (23.39) .921 |

View complete specifications at: [samtec.com?ARP6](http://samtec.com?ARP6)

| APF6 | NO. OF POSITIONS        | LEAD STYLE                | PLATING  | ROW                                       | SOLDER TYPE                    | OPTION                | “X”R  |
|------|-------------------------|---------------------------|--|---|--------------------------------|-----------------------|---|
|      | -025, -037<br>(Per Row) | -03.5<br>= (3.5 mm) .138" | -L<br>= 10 μ" (0.25 μm)<br>Gold on contact area,<br>Matte Tin on tail<br><br>-S<br>= 30 μ" (0.76 μm)<br>Gold on contact area,<br>Matte Tin on tail | -04<br>= Four Row<br><br>-06<br>= Six Row | -2<br>= Lead-Free Solder Balls | -L<br>= Squeeze Latch | -TR<br>= Tape & Reel<br><br>-FR<br>= Full Reel Tape & Reel<br>(must order maximum quantity per reel;<br>contact Samtec for quantity breaks) |

PRELIMINARY

**APF6-L**  
Cable Mates:  
ARP6



APF6-025-03.5-XX-04-2-L SHOWN

| NO. OF POSITIONS PER ROW | A             | C            |
|--------------------------|---------------|--------------|
| -025                     | (22.39) .881  | (17.59) .693 |
| -037                     | (30.01) 1.181 | (25.21) .993 |

| NO. OF ROWS | B            | D            |
|-------------|--------------|--------------|
| -04         | (13.50) .531 | (9.90) .390  |
| -06         | (18.10) .713 | (14.50) .571 |

**Note:**  
Some sizes, styles and options are non-standard, non-returnable.

View complete specifications at: [samtec.com?APF6](http://samtec.com?APF6)