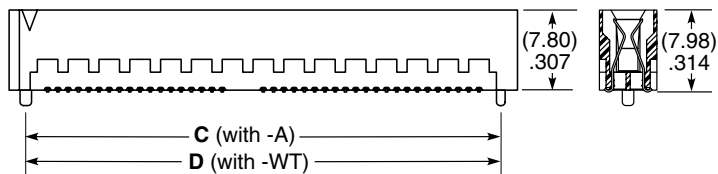
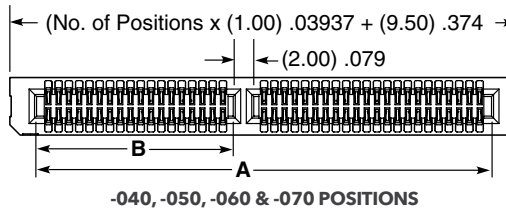
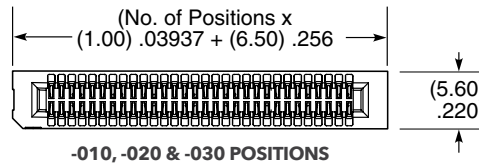
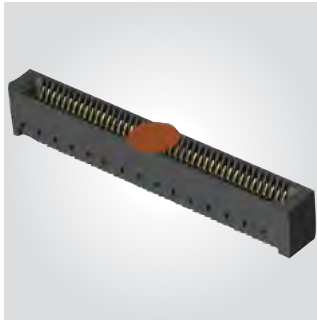


1.00 mm (.0394") PITCH • VERTICAL HIGH-SPEED EDGE CARD

HSEC1	POSITIONS PER ROW	CARD THICKNESS	PLATING OPTION	DV	OPTION	OTHER OPTIONS
	-010, -020, -030, -040, -050, -060, -070	-01 =(1.60 mm) .062" thick card	-L = 10 μ" (0.25 μm) Gold on contact area, Matte Tin on tail -S = 30 μ" (0.76 μm) Gold on contact area, Matte Tin on tail		-A or -WT required in callout -A =Alignment Pin (Not available with -WT) -WT =Weld tab (Not available with -A)	-K =(7.01 mm) .276" DIA Polyimide Film Pick & Place Pad -TR =Tape & Reel (Required for 10-60 positions) -FR = Full Reel Tape & Reel (must order max. quantity per reel; contact Samtec for quantity breaks) (Required for 10-60 positions)

HSEC1-DV
Card Mates:
(1.60 mm) .062"
thick card



POSITIONS PER ROW	A	B	C (with -A)	D (with -WT)
-010	(11.30) .445	N/A	(13.25) .522	(14.50) .571
-020	(21.30) .839	N/A	(23.25) .915	(24.50) .965
-030	(31.30) 1.232	N/A	(33.25) 1.309	(34.50) 1.358
-040	(44.30) 1.744	(19.15) .754	(46.25) 1.821	(47.50) 1.870
-050	(54.30) 2.138	(24.15) .951	(56.25) 2.215	(57.50) 2.264
-060	(64.30) 2.531	(29.15) 1.148	(66.25) 2.608	(67.50) 2.657
-070	(74.30) 2.925	(34.15) 1.344	(76.25) 3.002	(77.50) 3.051

Note:
Some sizes, styles and
options are non-standard,
non-returnable.

View complete specifications at: samtec.com?HSEC1-DV