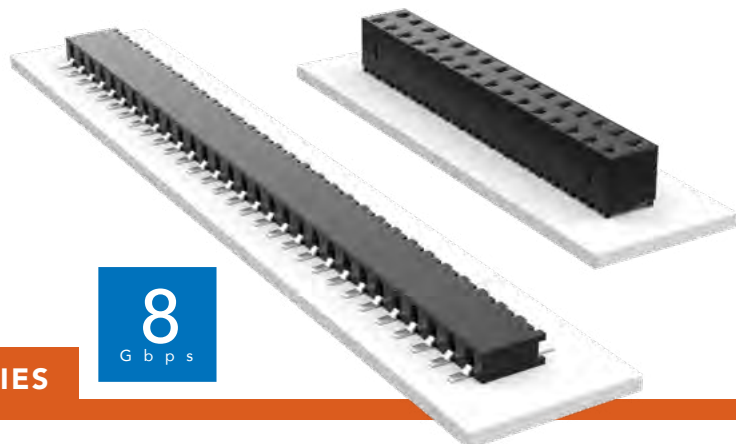


TIGER CLAW™ SOCKET STRIP

(2.00 mm) .0787" PITCH • MMS SERIES



MMS

Board Mates:
TMMH, TMM, MTMM, MMT,
TW, LTMM, ZLTMM, TSH

Cable Mates:
TCMD

SPECIFICATIONS

Insulator Material:

Black LCP

Contact Material:

Phosphor Bronze

Plating:

Sn or Au over
50 μm (1.27 μm) Ni

Current Rating (MMS/TMM):

3.9 A per pin
(2 pins powered)

Operating Temp Range:

-55 °C to +125 °C with Gold

-55 °C to +105 °C with Tin

Insertion Depth:

DH = (2.13 mm) .084" to

(2.79 mm) .110",

SH = (2.13 mm) .084" minimum or pass-through

Top Entry DV/SV =

(2.13 mm) .084" to

(4.32 mm) .170"

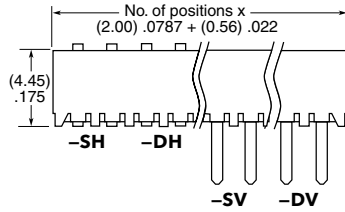
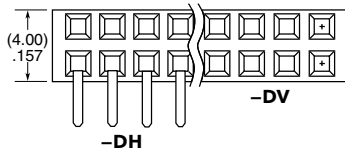
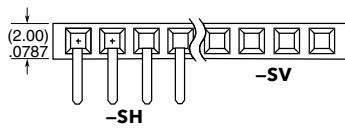
Bottom Entry DV/SV =

(4.27 mm) .168" minimum

(Plus board)



02 thru 40



-F
= Gold flash on contact,
Matte Tin on tail

-L
= 10 μm (0.25 μm)
Gold contact,
Matte Tin on tail

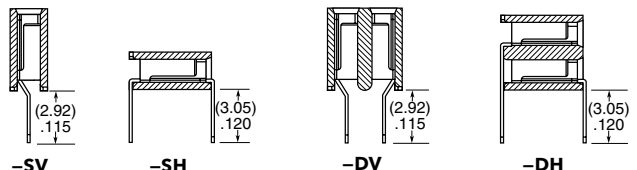
-SV
= Single
Vertical

-SH
= Single
Horizontal

-DV
= Double
Vertical

-DH
= Double
Horizontal

-“XX”
= Polarized
Position



PROCESSING

Lead-Free Solderable:

Yes

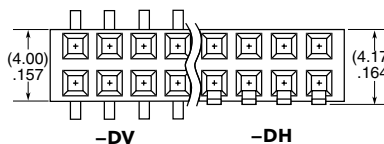
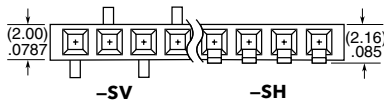
SMT Lead Coplanarity:

(0.15 mm) .006" max*

*(.004" stencil solution may be available; contact IPG@samtec.com)



02 thru 40



-F
= Gold flash on contact,
Matte Tin on tail

-L
= 10 μm (0.25 μm)
Gold contact,
Matte Tin on tail

-SV
= Single
Vertical

-SH
= Single
Horizontal

-DV
= Double
Vertical

-DH
= Double
Horizontal

-“XX”
= Polarized Position

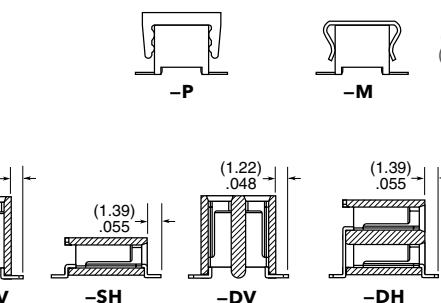
-K
= (5.50 mm) .217" DIA
Polyimide Film
Pick & Place Pad
(-SV & -DV only)
(-SV = 3 positions min.)
(-DV = 4 positions min.)

-M
= Metal Pick & Place Pad
(4 positions min.)
(-DV only)

-P
= Plastic Pick & Place Pad
(4 positions min., -SV only)
(5 positions min., -DV only)

-TR
= Tape & Reel

-FR
= Full Reel
Tape & Reel
(must order max.
quantity per reel;
contact Samtec for
quantity breaks)



ALSO AVAILABLE

MOQ Required

Alignment Pin (-DV only)
Locking clips and Through-hole
pass-through options
Other platings

Note:

Some lengths, styles and
options are non-standard,
non-returnable.