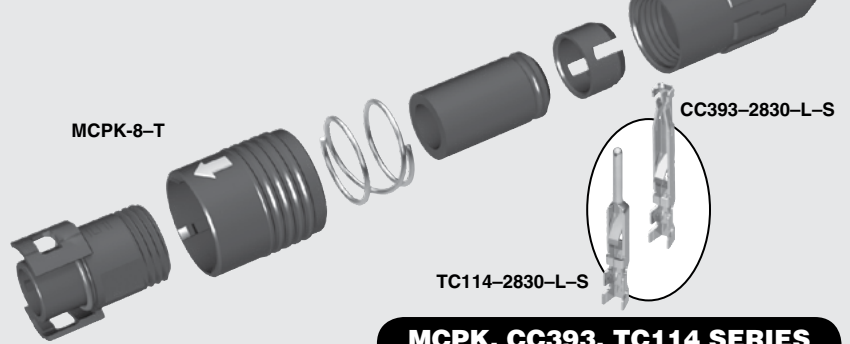




ACCLIMATE™



MCPK, CC393, TC114 SERIES

8 SERIES IP67 FIELD TERMINATION KIT

Mates with:
MCR(K), MCP(K)

SPECIFICATIONS

For complete specifications see www.samtec.com?MCPK

- Insulator Material:** PPS
- Terminal Material:** Phosphor Bronze
- Contact Material:** Phosphor Bronze
- Operating Temp Range:** -20 °C to +80 °C
- Gasket Material:** Silicone
- Spring Material:** Stainless Steel
- Coupling Ring Spacer:** PBT
- Cable Clamp:** POM
- RoHS Compliant:** Yes

DUST CAPS

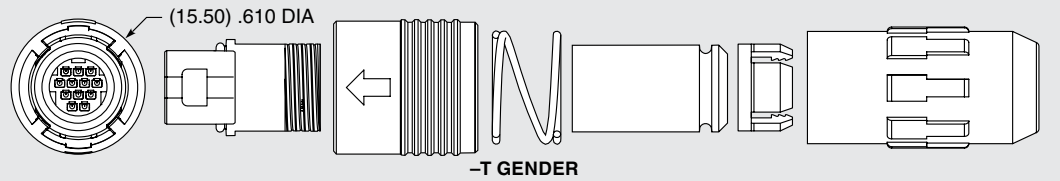
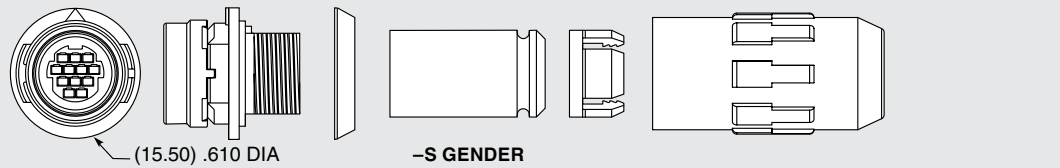
- -S (Socket) = DCA-MCR-8
 - -T (Terminal) = DCA-MCP-8
- Visit sealedio.samtec.com for a complete list of sealed systems

Note: Samtec's MCPK Series is dual sourced by Hirose Electric Co., LTD.



-T = Terminal (12 positions)

-S = Socket (12 positions)



SPECIFICATIONS

For complete specifications see www.samtec.com?CC393 or www.samtec.com?TC114

Plating:
10 µ" (0.25 µm) Gold on contact

TOOLING

- Hand Tool:
CAT-HT-393-2430-13
- Mini Applicator
(28-30 AWG):
CAT-MC-393-2830-XX-01
- Extraction Tool:
CAT-EX-MCX-8-01



CC393
= Contact

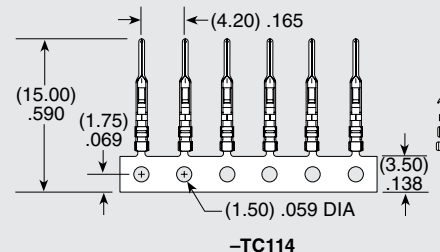
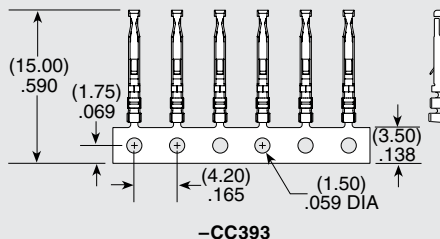
TC114
= Terminal

-2830
= 28 to 30 AWG

-S
= Strip
(15 contacts or terminals)

-M
= Mini Reel
(1,000 - 5,000 contacts or terminals)

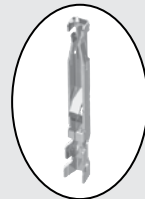
-R
= Reel
(30,000 contacts or terminals)





ACCLIMATE™

MCRK-8-S



CC393-2830-L-S

MCRK, CC393 SERIES

8 SERIES IP67 FIELD TERMINATION KIT

Mates with:
MCP(K)

SPECIFICATIONS

For complete specifications see www.samtec.com?MCRK

Insulator Material:
PPS

Contact Material:
Phosphor Bronze

Operating Temp Range:
-20 °C to +80 °C

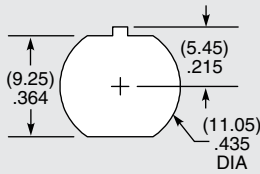
Gasket Material:
Neoprene Rubber

Lock Washer:
Phosphor Bronze, Ni plated

Hex Nut:
Brass, Ni plated

RoHS Compliant:
Yes

PANEL OPENING



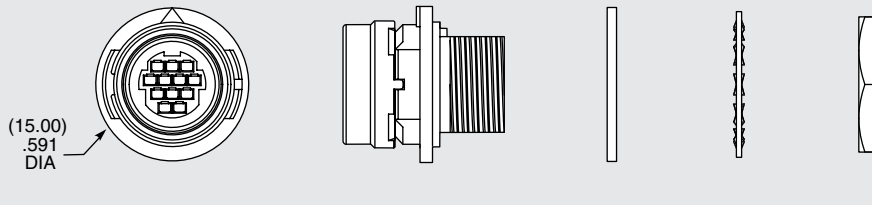
Note: Samtec's MCRK Series is dual sourced by Hirose Electric Co., LTD.



DUST CAPS

- DCA-MCR-8

Visit sealedio.samtec.com for a complete list of sealed systems



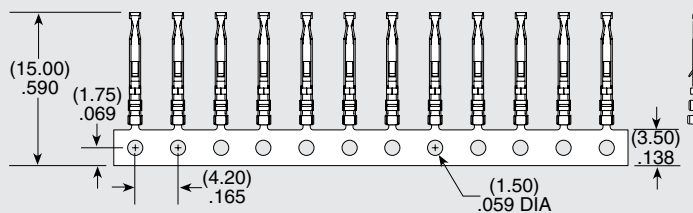
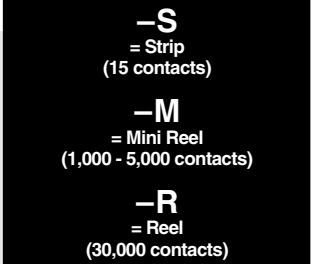
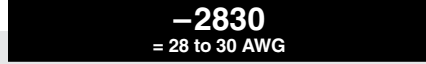
SPECIFICATIONS

For complete specifications see www.samtec.com?CC393

Plating:
10 μm (0.25 μm) Gold on contact

TOOLING

- Hand Tool:
CAT-HT-393-2430-13
- Mini Applicator
(28-30 AWG):
CAT-MC-393-2830-XX-01
- Extraction Tool:
CAT-EX-MCX-8-01



IP67 SEALED 8 SERIES CABLE ASSEMBLY



MCP/MCR SERIES

MCP

Mates with:
MCR(K), MCP(K)

MCP Kit:
MCPK

MCR

Mates with:
MCP(K)

MCR Kit:
MCRK

MCP	8	LEAD STYLE	PLATING OPTION	LENGTH	END 1 OPTION	END 2 OPTION
		-02 = 12 positions, 28 AWG	-L = 10 μ" (0.25 μm) Gold on contact area	-01.00 = 1 meter -02.00 = 2 meters Standard lengths	-T = Terminal -S = Socket (Not available with End 2 -T)	-T = Terminal -S = Socket -BC = Blunt Cut

SPECIFICATIONS

Insulator Material:
PPS

Terminal Material:
Phosphor Bronze (MCR)

Contact Material:
Phosphor Bronze (MCR)

Operating Temp Range:
-20 °C to +80 °C

Gasket Material:
Silicone (MCP)
Neoprene Rubber (MCR)

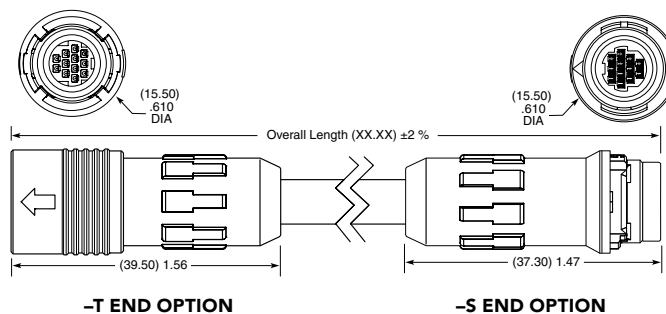
Spring Material:
Stainless Steel (MCP)

Coupling Ring Spacer:
PBT (MCP)

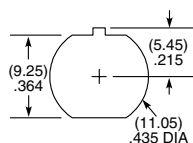
Cable Clamp:
POM (MCP)

Lock Washer:
Phosphor Bronze,
Ni plated (MCR)

Hex Nut:
Brass, Ni plated (MCR)



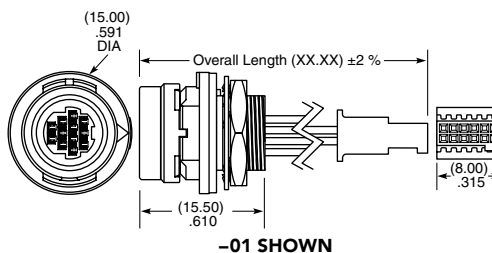
PANEL OPENING



MCR	8	LEAD STYLE	PLATING OPTION	LENGTH	END 1 OPTION	END 2 OPTION
		-02 = 12 positions, 28 AWG	-L = 10 μ" (0.25 μm) Gold on contact area	-00.25 = 0.25 meter -00.50 = 0.50 meter Standard lengths	-S = Socket	-BC = Blunt Cut (Color wire only, see chart) -01 = 2x6 SFSD (Pin 1 to Pin 1) (Black wire only)

-BC CABLE COLOR CODING

PIN	COLOR
1	BROWN
2	RED
3	ORANGE
4	YELLOW
5	GREEN
6	DARK BLUE
7	VIOLET
8	GRAY
9	WHITE
10	BLACK
11	GREEN/BLACK
12	TAN



Notes:
Samtec's MCR, MCP Seires is dual soruced by Hirose Electric Co. LTD

Some lengths, styles and options are non-standard, non-returnable

DUST CAPS

-S (socket) = DCA-MCR-8
-T (terminal) = DCA-MCP-8