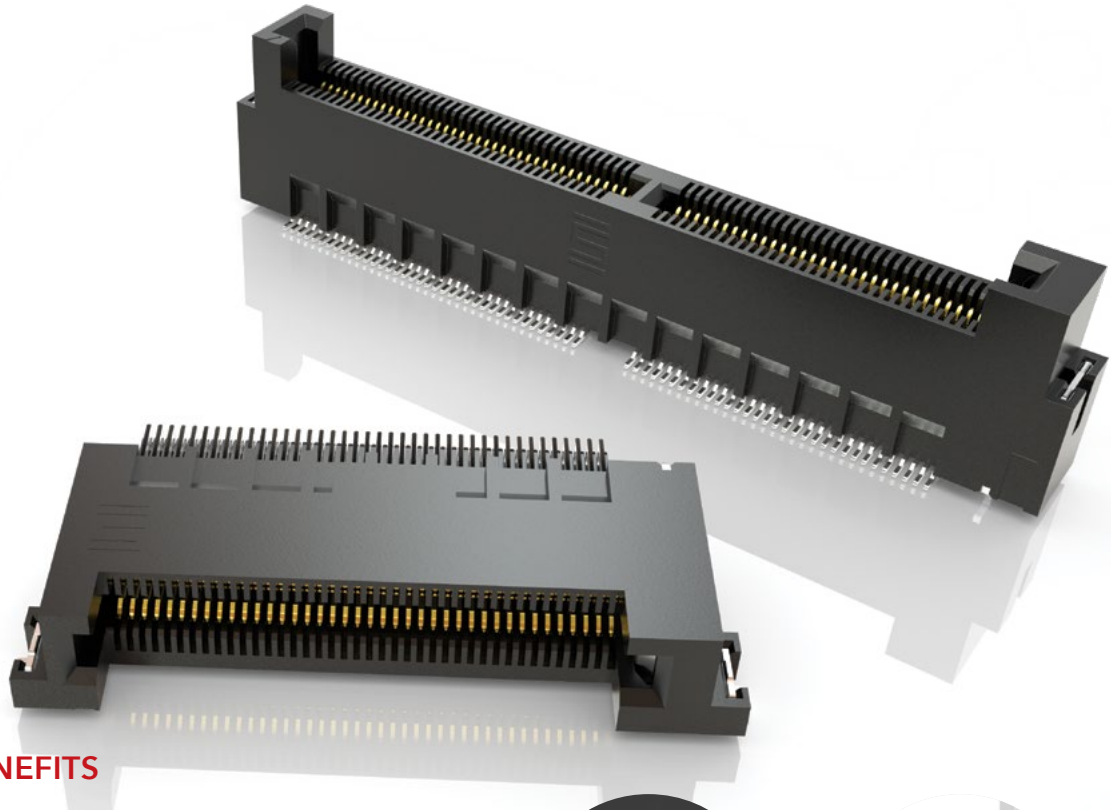


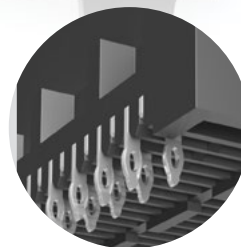
# MICRO EDGE CARD SYSTEMS

0.50 mm, 0.635 mm, 0.80 mm, 1.00 mm, 1.27 mm, 2.00 mm PITCH

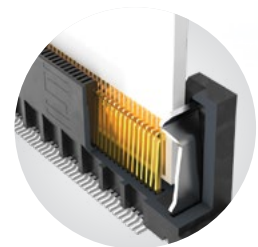


## FEATURES & BENEFITS

- Up to 56 Gbps PAM4
- PCI Express® 4.0 (MEC5 Series)
- Solutions for .062" (1.60 mm), and .093" (2.36 mm) thick cards
- Choice of pitch: 0.50 mm, 0.635 mm, 0.80 mm, 1.00 mm, 1.27 mm, 2.00 mm
- Vertical, right-angle, edge mount
- Available in surface mount and through-hole



Staggered press-fit tails  
(MEC8-VP)



Justification beam ensures  
card and body are flushed  
(MEC5)

## KEY SPECIFICATIONS

SERIES	PITCH	TOTAL POSITIONS	INSULATOR MATERIAL	CONTACT MATERIAL	OPERATING TEMP RANGE	CURRENT RATING	VOLTAGE RATING	LEAD-FREE SOLDERABLE
MEC5	0.50 mm	60-200	Black LCP	Phosphor Bronze	-55 °C to +125 °C	1.5 A (2 pins)	125 VAC	Yes
MEC6	0.635 mm	20-140	Black LCP	Phosphor Bronze	-55 °C to +125 °C	2.4 A (2 pins)	195 VAC	Yes
MEC8	0.80 mm	20-140	Black LCP	Phosphor Bronze	-55 °C to +125 °C	1.8 A (4 pins)	185 VAC	Yes
MEC1	1.00 mm	20-140	Black LCP	Phosphor Bronze	-55 °C to +125 °C	2.2 A (2 pins)	250 VAC	Yes
MECF	1.27 mm	10-100	Black/Natural LCP	BeCu	-55 °C to +125 °C	3.5 A (2 pins)	280 VAC	Yes
MEC2	2.00 mm	10-100	Black/Natural LCP	BeCu	-55 °C to +125 °C	3.5 A (2 pins)	238 VAC	Yes

(0.80 mm) .0315" PITCH • RIGHT-ANGLE/EDGE MOUNT EDGE CARD SOCKET

**MEC8** - **1** POSITIONS PER ROW - **02** - **PLATING OPTION** - **D** - **RA1** - **"X"R**

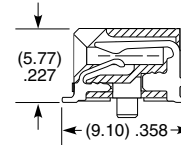
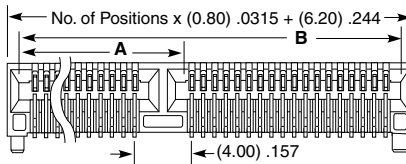
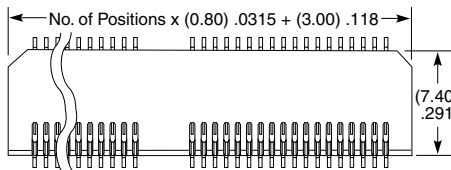
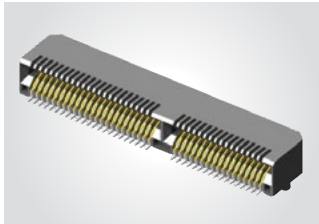
10, 13, 20, 25, 30, 37, 40, 49, 50

-L  
= 10 μ" (0.25 μm)  
Gold on contact,  
Matte Tin on tail

Leave blank for Tray Packaging  
-TR  
= Tape & Reel  
-FR  
= Full Reel  
Tape & Reel  
(must order max. quantity per reel; contact Samtec for quantity breaks)

**MEC8-RA1**

Card Mates:  
(1.60 mm) .062" thick card



POSITIONS PER ROW	A	B
13	(6.10) .240	(15.00) .591
25		(24.60) .969
37	(18.10) .713	(34.20) 1.346
40	(18.90) .744	(36.60) 1.441
49	(22.90) .902	(43.80) 1.724
50		(44.60) 1.756

View complete specifications at: [samtec.com?MEC8-RA](http://samtec.com?MEC8-RA)

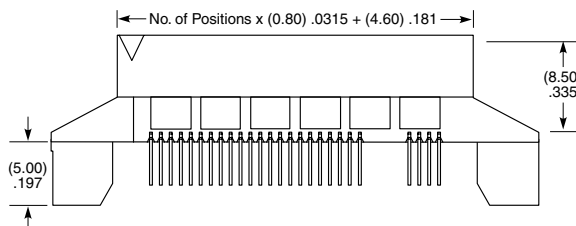
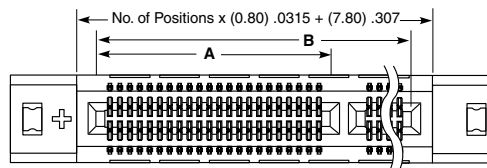
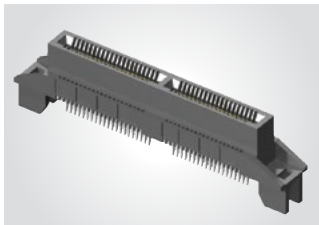
**MEC8** - **1** POSITIONS PER ROW - **02** - **PLATING OPTION** - **D** - **EM2**

10, 20, 30, 40, 50, 60, 70

-L  
= 10 μ" (0.25 μm)  
Gold on contact,  
Matte Tin on tail

**MEC8-EM**

Card Mates:  
(1.60 mm) .062" thick card



POSITIONS PER ROW	A	B
40	(18.90) .744	(36.60) 1.441
50	(22.90) .902	(44.60) 1.756
60	(26.90) 1.059	(52.60) 2.071
70	(30.90) 1.217	(60.60) 2.386

**Note:**  
Some sizes, styles and options are non-standard, non-returnable.

View complete specifications at: [samtec.com?MEC8-EM](http://samtec.com?MEC8-EM)