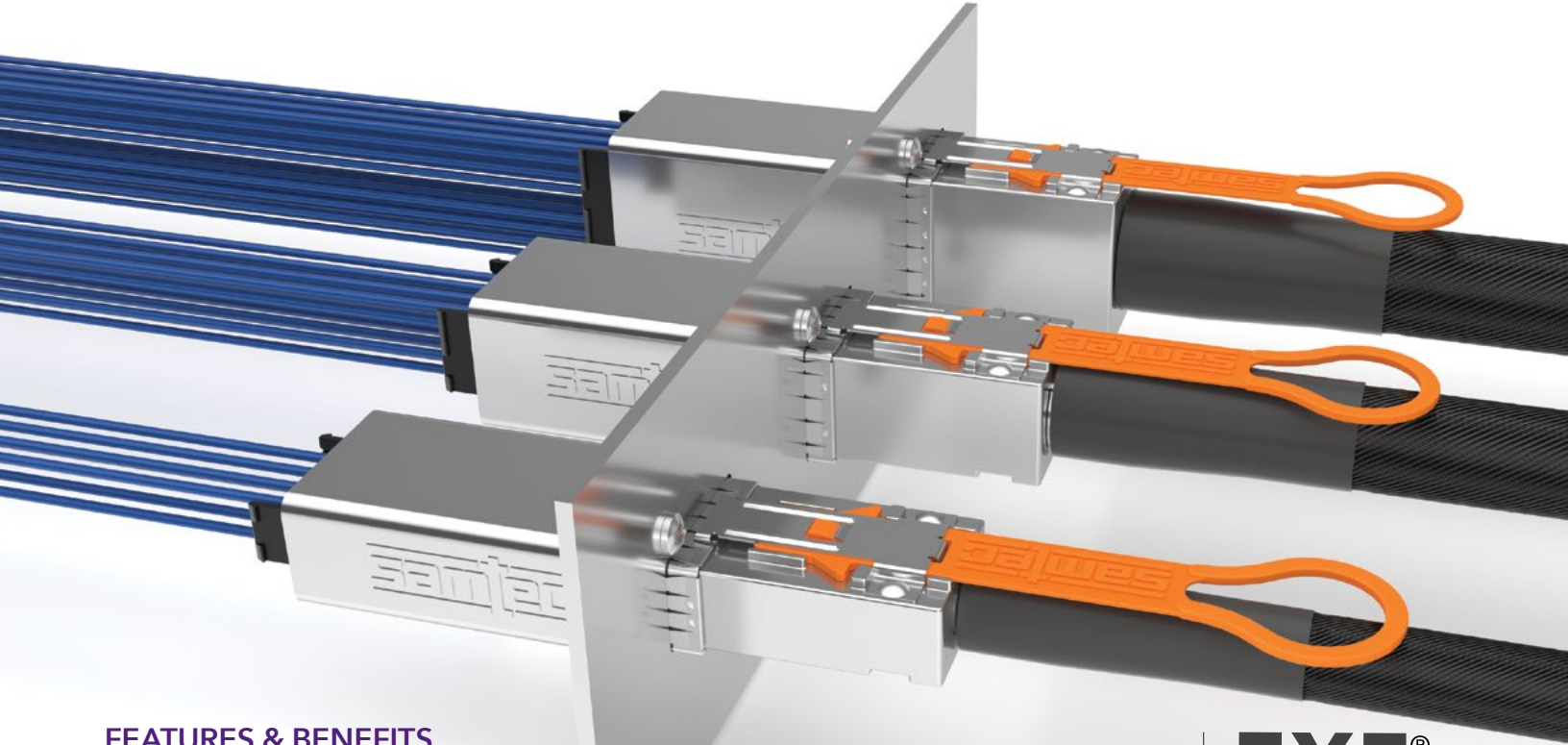


NOVARAY[®] I/O

EXTREME PERFORMANCE PANEL MOUNT I/O ASSEMBLIES



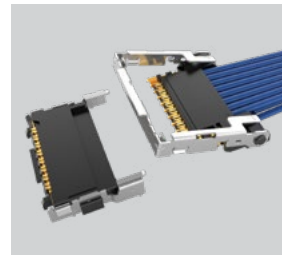
FEATURES & BENEFITS

- 16 & 32 differential pair configurations
– Accommodates x4 or x8 plus sidebands
- Cable-to-Cable bulkhead panel connection using Flyover[®] Cable Technology
- External Cable: 28, 30 or 34 AWG twinax
- Internal Cable: 34 AWG twinax
- Single-Ended coax options also available
- Full external EMI shielding
- Multiple end 2 high-speed connector options

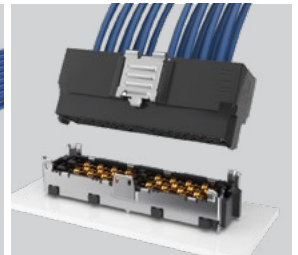
NOVARAY[®] I/O

EYE[®]
SPEED
CABLE

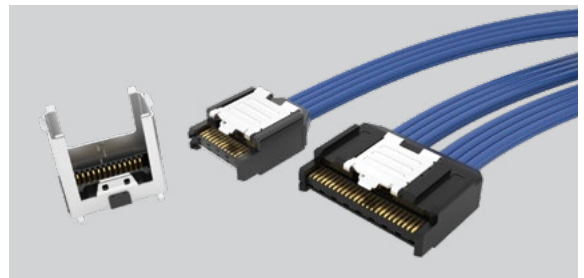
VARIOUS END 2 OPTIONS AVAILABLE



Si-Fly[™]



NovaRay[®]



AcceleRate[®]

PAM 4
112
Gbps

| TARGETED CONFIGURATIONS | AGGREGATE DATA RATE |
|--|---------------------|
| 8 Pair (In Development) | 896 Gbps |
| 16 Pair | 1792 Gbps |
| 32 Pair | 3584 Gbps |
| x4 (8 Pair + PCIe [®] Sidebands) | 512 Gbps |
| x8 (16 Pair + PCIe [®] Sidebands) | 1024 Gbps |

PCI EXPRESS[®]
GEN 6 COMPATIBLE

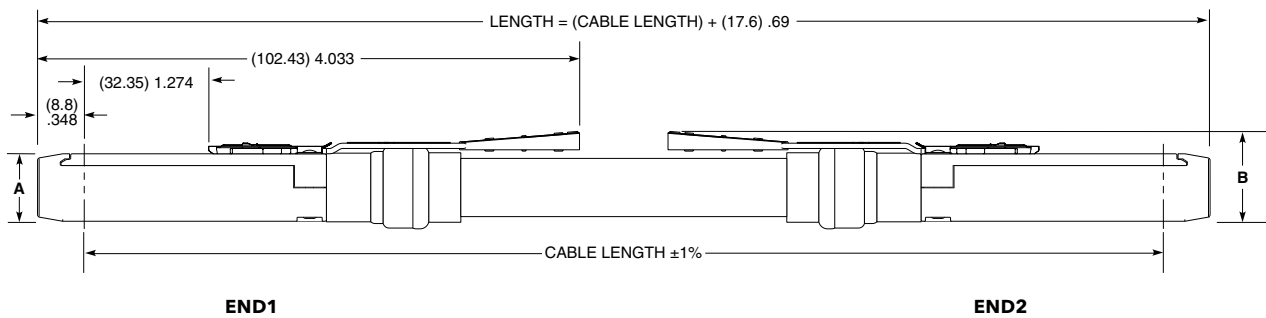
EXTREME PERFORMANCE I/O CABLE

| NVACE | SIGNAL TYPE | CABLE TYPE | ROWS | CABLE LENGTH | END 2 | PIN OUT | SPEED |
|-------|---|--------------------------------------|----------------|---|---------------|----------------------------|----------------------------------|
| | -DP = Differential (twinax pairs only) | -1 = 34 AWG, 100 Ω twinax | -4 = 4 row | -X.X = Length in meters 0.5 meters (19.68") minimum | -A = NVACE | -1 = Pin A01 to Pin A01 | (Differential twinax pairs only) |
| | -SE = Single ended (coax signals only) | -5 = 28 AWG, 100 Ω twinax | -8 = 8 rows | | | -2 = Pin A01 to Pin N | -1 = 56G PAM4 |
| | | -6 = 34 AWG, 50 Ω coax (-SE only) | | | | | -2 = 112G PAM4 |

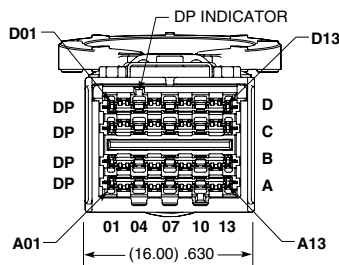
PRELIMINARY

NVACE

Cable Mates: NVACP
Panel Cage: NVC

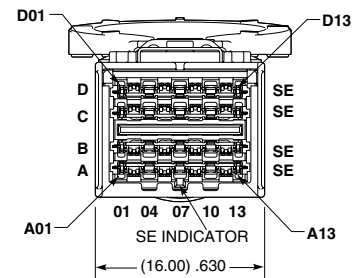


NVACE-XX-X-4-X-X-A-X-2 SHOWN



-DP SHOWN

| ROW | A | B |
|-----|--------------|--------------|
| -4 | (12.75) .502 | (17.00) .669 |
| -8 | (20.75) .817 | (25.00) .984 |



-SE SHOWN

Notes:
Cable lengths longer than 3 meters (118") are not supported with S.I. test data.

Some sizes, styles and options are non-standard, non-returnable.

View complete specifications at: samtec.com?NVACE