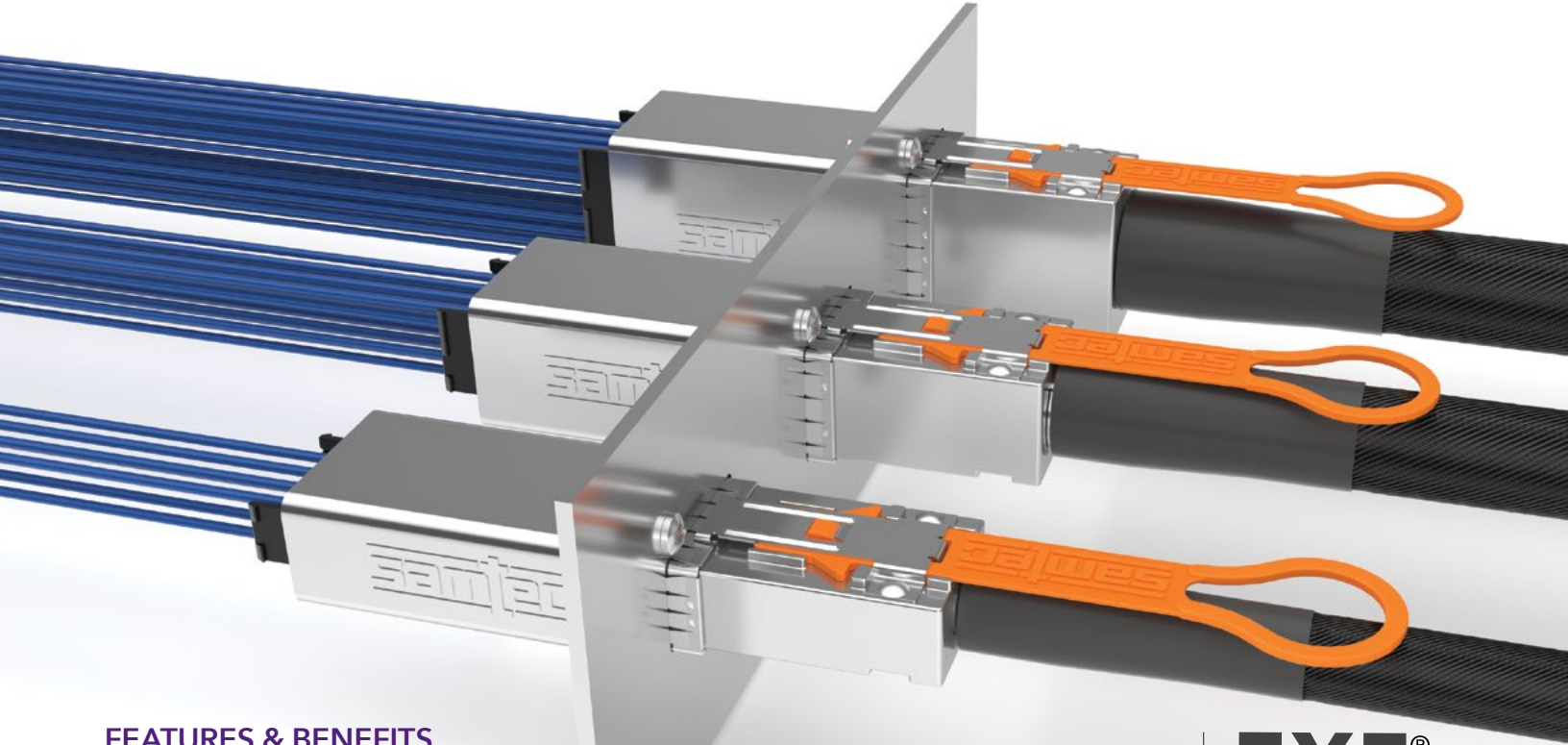


# NOVARAY<sup>®</sup> I/O

## EXTREME PERFORMANCE PANEL MOUNT I/O ASSEMBLIES



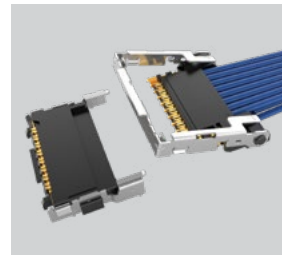
### FEATURES & BENEFITS

- 16 & 32 differential pair configurations  
– Accommodates x4 or x8 plus sidebands
- Cable-to-Cable bulkhead panel connection using Flyover<sup>®</sup> Cable Technology
- External Cable: 28, 30 or 34 AWG twinax
- Internal Cable: 34 AWG twinax
- Single-Ended coax options also available
- Full external EMI shielding
- Multiple end 2 high-speed connector options

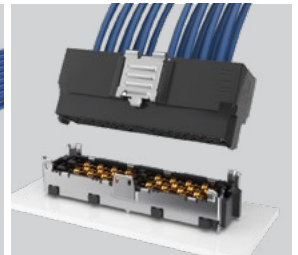
NOVARAY<sup>®</sup> I/O

EYE<sup>®</sup>  
SPEED  
CABLE

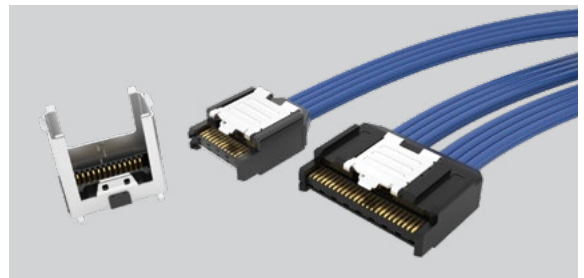
### VARIOUS END 2 OPTIONS AVAILABLE



Si-Fly<sup>™</sup>



NovaRay<sup>®</sup>



AcceleRate<sup>®</sup>

PAM 4  
112  
Gbps

TARGETED CONFIGURATIONS	AGGREGATE DATA RATE
8 Pair (In Development)	896 Gbps
16 Pair	1792 Gbps
32 Pair	3584 Gbps
x4 (8 Pair + PCIe <sup>®</sup> Sidebands)	512 Gbps
x8 (16 Pair + PCIe <sup>®</sup> Sidebands)	1024 Gbps

PCI EXPRESS<sup>®</sup>  
GEN 6 COMPATIBLE

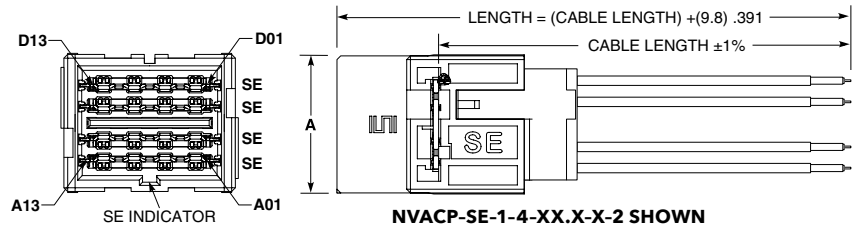
## EXTREME PERFORMANCE PANEL MOUNT CABLE

NVACP	SIGNAL TYPE	CABLE STYLE	ROWS	CABLE LENGTH	END 2	PIN OUT	SPEED
	-DP = Differential (twinax pairs only)	-1 = 34 AWG 100 Ω twinax	-4 = 4 row  -8 = 8 rows	-XX.X = Length in inches 06.0" (152.4 mm) minimum	(Leave blank for -SE)  -A = 1 ARC6	-1 = Pin A01 to Pin A01  -4 = Pin A01 to Pin AN (N equals last position)	(Differential twinax pairs only)  -1 = 56G PAM4  -2 = 112G PAM4

**NVACP**  
Cable Mates:  
NVACE  
Panel Cage:  
NVC



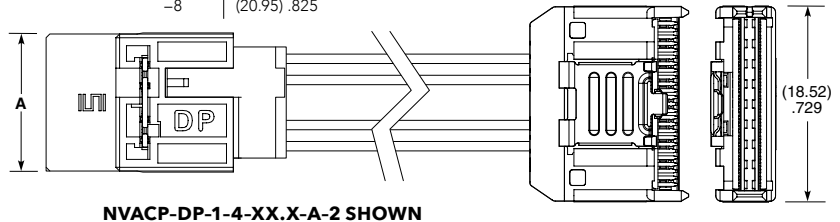
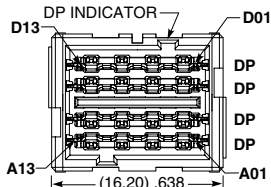
PRELIMINARY



ROW	A
-4	(12.95) .510
-8	(20.95) .825

**Notes:**  
Cable lengths longer than 40.00" (1 meter) are not supported with S.I. test data.

Some sizes, styles and options are non-standard, non-returnable.



## DIE CAST PANEL CAGE

View complete specifications at: [samtec.com?NVACP](http://samtec.com?NVACP)

NVC	NO. OF PORTS	ROWS	PACKAGING
-----	--------------	------	-----------

PRELIMINARY

**NVC**  
Mates:  
NVACP, NVACE



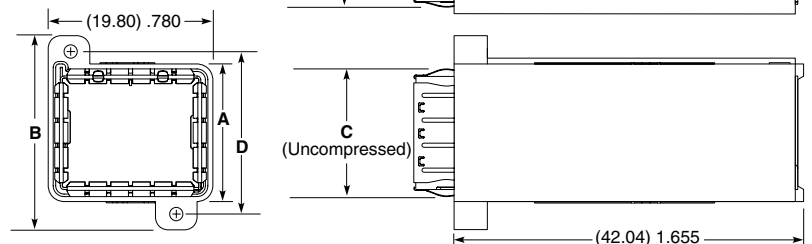
- 1  
= 1 Port
- 2  
= 2 Ports (8 row only)
- 4  
= 4 Ports (8 row only)

- 04  
= 4 rows
- 08  
= 8 rows

- TY  
= Trays

ROW	A	B	C	D
-04	(16.55) .652	(23.35) .919	(15.36) .605	(19.56) .770
-08	(24.55) .967	(31.35) 1.234	(23.36) .920	(27.56) 1.084

**Note:**  
Some sizes, styles and options are non-standard, non-returnable.



View complete specifications at: [samtec.com?NVC](http://samtec.com?NVC)