

# ULTRA RUGGED I/O SYSTEMS

(1.00 mm) .0394" PITCH



MAX  
**2.9**  
A m p s

## FEATURES & BENEFITS

- Small form factor
- Four points of contact for an extremely reliable connection
- Up to 40 positions per row
- Cable-to-cable & cable-to-board solutions
- EMI shielding in development to reduce noise generated and protect sensitive lines
- Through-hole or surface mount
- 28 & 30 AWG cable



Shown actual size at 20 total positions



Hyperboloid-type contact for extreme high mating cycles



Extreme density with up to 1,450 total I/Os in a 1RU panel (29 cables at 50 total I/Os each)

## KEY SPECIFICATIONS (P1PD(X), B1SD(X) & P1M)

PITCH	INSULATOR MATERIAL	CONTACT MATERIAL	SHIELD MATERIAL	PLATING	OPERATING TEMP RANGE	CURRENT RATING	VOLTAGE RATING
1.00 mm	Liquid Crystal Polymer	Beryllium Copper	Zinc Alloy	Au over 50 μm (1.27 μm) Ni	-10 °C to +80 °C (PVC) -40 °C to +125 °C (*Teflon™ Fluoropolymer)	2.9 A per pin (2 pins powered)	253 VAC

\*Teflon™ is a trademark of The Chemours Company FC, LLC used under license by Samtec.

**(1.00 mm) .0394" PITCH • PANEL MOUNT I/O CABLE/COMPONENTS**

SERIES	NO. OF POSITIONS	WIRE GAUGE	COLOR CODE	PLATING	ASSEMBLED LENGTH	END OPTION	PINOUT
--------	------------------	------------	------------	---------	------------------	------------	--------

**P1PD**  
Double Row  
Panel Mount  
PVC Cable

**-10, -15,  
-25, -30**  
(Per Row)

**-28**  
= 28 AWG  
  
**-30**  
= 30 AWG

(Leave blank for standard wire)  
  
**C**  
= Color Code Wire  
(Not available with P1PDT)

**-H**  
= 30 μm (0.76 μm)  
Gold on contact area,  
Gold flash on tail

**-"XX.X"**  
= Length in inches  
06.0" (152.4 mm)  
minimum

(Leave blank for single ended)

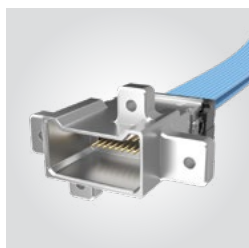
**-B**  
= B1SD  
  
**-S**  
= SFSD

(Leave blank for single ended)

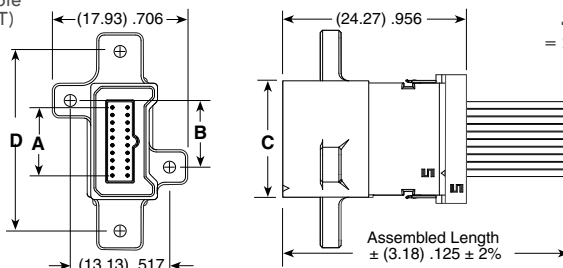
**1**  
= Pin 1 to Pin 1  
  
**2**  
= Pin 1 to Pin 2  
  
**3**  
= Pin 1 to Pin N  
  
**4**  
= Pin 1 to Pin N-1

**P1PDT**  
Double Row  
Panel Mount  
Blue \*Teflon™  
Fluoropolymer  
Cable

**P1PD, P1PDT**  
Cable Mates:  
B1SD, B1SDT



PRELIMINARY



P1PDX-10-XXX-H-XX.X SHOWN

NO. OF POSITIONS	A	B	C	D
-10	(9.00) .354	(8.79) .346	(15.39) .606	(23.75) .935
-15	(14.00) .551	(13.79) .543	(20.39) .803	(28.75) 1.132
-25	(24.00) .945	(23.79) .937	(30.39) 1.196	(38.75) 1.526
-30	(29.00) 1.142	(28.79) 1.133	(35.39) 1.393	(43.75) 1.722

\*Teflon™ is a trademark of The Chemours Company FC, LLC used under license by Samtec.

**Notes:**  
Teflon™ Fluoropolymer Cable is intended for crimp only. Contact Samtec for solderable cable applications.

Some lengths, styles and options are non-standard, non-returnable.

**P1PD CABLE HOLDER  
(Required for use with IPP1)**

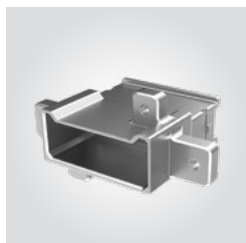
SERIES	NUMBER OF POSITIONS
P1PDR	-10, -15, -25, -30

View complete specifications at: [samtec.com?P1PD](http://samtec.com?P1PD) & [samtec.com?P1PDT](http://samtec.com?P1PDT)

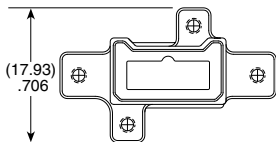
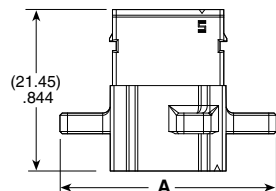
**P1PDS**

**NO. OF POSITIONS** - **N**

**-10, -15, -25, -30**



PRELIMINARY



NO. OF POSITIONS	A
-10	(28.75) 1.132
-15	(33.75) 1.329
-25	(43.75) 1.722
-30	(48.75) 1.920

**Note:**  
Some lengths, styles and options are non-standard, non-returnable.

**TOOLING**

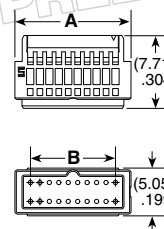
Hand Tool: TBD

Mini Applicator: TBD

**IPP1**

**NO. OF POSITIONS** - **1**

**-10, -15, -25, -30**



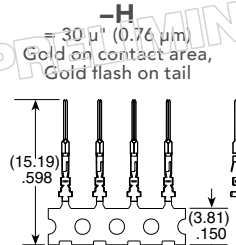
NO. OF POSITIONS	A	B
-10	(12.290) .484	(9.00) .354
-15	(17.290) .681	(14.00) .551
-25	(27.290) 1.074	(24.00) .945
-30	(32.290) 1.271	(29.00) 1.142

**TC145**

**01**

**PLATING**

**PACKAGING**



**-R**  
= Full Reel  
(25,000 Terminals Per Reel)

**-M**  
= Mini Reel  
(1,000 to 5,000 Terminals Per Reel)

**-B**  
= Bubble Bag  
(35 Terminals)

View complete specifications at: [samtec.com?P1PDS](http://samtec.com?P1PDS), [samtec.com?IPP1](http://samtec.com?IPP1) & [samtec.com?TC145](http://samtec.com?TC145)