

1.00 mm TO 110 GHz

1.00 mm Cable Connectors PRF10

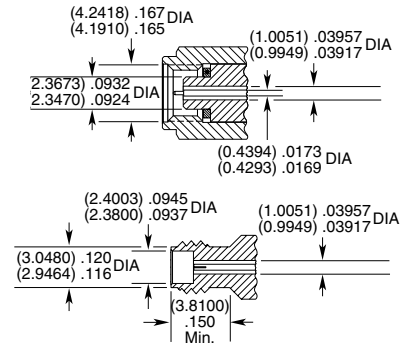


CONNECTORS FOR INDUSTRY STANDARD CABLES

PRF10-J-C-VP-047D-SS	.047, semi-rigid
PRF10-P-C-VP-047D-SS	.047, semi-rigid

J-C = Cable Jack
 P-C = Cable Plug
 VP = Plating (75 μ" Gold center contact, passivated outer contact)
 SS = Straight, Solder Clamp

INTERFACE STANDARD



1.35 mm TO 90 GHz

1.35 mm Cable Assemblies RF047-A



SERIES	END 1 CONNECTOR	END 2 CONNECTOR	OVERALL LENGTH
--------	-----------------	-----------------	----------------

RF047-A
 = (1.2 mm) .047" overshield DIA
 29 AWG millimeter wave cable

-13BJ
 = 1.35 mm Bulkhead Straight Jack

-13SP
 = 1.35 mm Straight Plug

-"XXXX"
 = Overall Length in millimeters
 -0100 (0100 mm) 3.94" minimum

ALSO AVAILABLE

1.85 mm, 2.40 mm, 2.92 mm, SMPM = RF047-A

VSWR

RF047-A: 1.40 max.

1.35 mm Cable Connectors PRF13

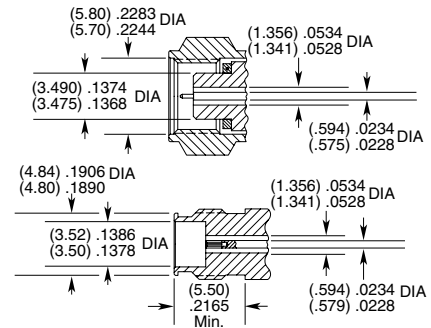


CONNECTORS FOR INDUSTRY STANDARD CABLES

PRF13-P-C-VP-047A-SS	.047 Temp-Flex, low loss flexible, 29 AWG
PRF13-J-C-VP-047A-BS	.047 Temp-Flex, low loss flexible, 29 AWG

P-C = Cable Plug
 J-C = Cable Jack
 VP = Plating (75 μ" Gold center contact, passivated outer contact)
 SS = Straight, Solder Clamp
 BS = Bulkhead, Solder Clamp

INTERFACE STANDARD



1.35 mm Board Connectors 135

Cable Mates:
RF047-A



135	GENDER	TYPE	PLATING	ORIENTATION	TERMINATION	OPTION	PACKAGING
-----	--------	------	---------	-------------	-------------	--------	-----------

-J
 = Jack

-P
 = PCB Mount

-VP
 = 50 μ"
 (1.27 μm) Gold center contact, Passivated outer contact

-ST
 = Straight

-CM
 = Compression Mount Stripline

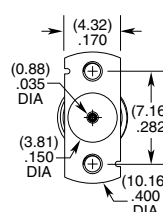
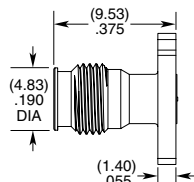
-1
 = Without screws

Leave blank for tray packaging

-CMM
 = Compression Mount Microstrip

-2
 = With screws

-K
 = Individually bagged



1.85 mm TO 65 GHz

1.85 mm Cable Assemblies

RF047-A, RF086



VSWR

RF047-A: 1.40 max.
RF086: 1.40 max.

SERIES	END 1 CONNECTOR	END 2 CONNECTOR	OVERALL LENGTH
RF047-A = (1.2 mm) .047" overshield DIA 29 AWG millimeter wave cable RF086 = (2.18 mm) .086" overshield DIA 23 AWG millimeter wave cable	-18SJ = 1.85 mm Straight Jack -18SP = 1.85 mm Straight Plug		-“XXXX” = Overall Length in millimeters -0100 (0100 mm) 3.94" minimum
ALSO AVAILABLE			
2.40 mm, SMPM, 2.92 mm = RF086			
1.35 mm, 2.40 mm, SMPM, 2.92 mm = RF047-A			

1.85 mm Cable Connectors

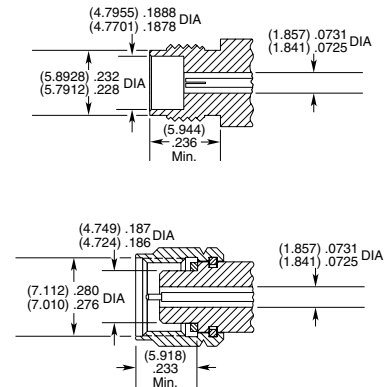
PRF18



CONNECTORS FOR INDUSTRY STANDARD CABLES	
PRF18-J-C-EP-047D-SS	.047, semi-rigid
PRF18-P-C-EP-047D-SS	.047, semi-rigid
PRF18-J-C-EP-086-SS	.086 Temp-Flex, low loss flexible
PRF18-P-C-EP-086-SS	.086 Temp-Flex, low loss flexible
PRF18-J-C-EE-405-SD	RG 405, .085, semi-rigid
PRF18-J-C-EP-085-BS	Harbour SS405, flexible alternative to RG 405
PRF18-P-C-EE-085-SD	Harbour SS405, flexible alternative to RG 405
PRF18-P-C-EP-085-SS	Harbour SS405, flexible alternative to RG 405
PRF18-P-C-EP-047A-SS	.047 Temp-Flex, low loss flexible, 29 AWG
PRF18-J-C-EP-047A-SS	.047 Temp-Flex, low loss flexible, 29 AWG

P-C = Cable Plug
 J-C = Cable Jack
 EE = Plating (50 μ" gold center contact, & outer contact)
 EP = Plating (50 μ" gold center contact, passivated outer contact)
 SS = Straight, Solder Clamp
 SD = Straight, Direct Solder
 BS = Bulkhead, Solder Clamp

INTERFACE STANDARD



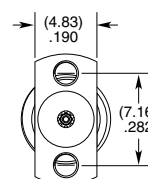
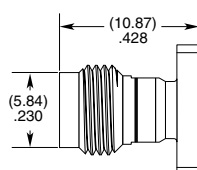
1.85 mm Board Connectors

185

Cable Mates:
RF047-A, RF086



185	GENDER	TYPE	PLATING	ORIENTATION	TERMINATION	OPTION	PACKAGING
	-J = Jack	-P = PCB Mount	-EP = 50 μ" (1.27 μm) Gold center contact, Passivated outer contact	-ST = Straight	-CM = Compression Mount Stripline -CMM = Compression Mount Microstrip	-1 = Without Screws -2 = With Screws	Leave blank for tray packaging -K = Individually bagged



2.92 mm TO 40 GHz

2.92 mm Cable Assemblies

RF047-A, RF086, RF085, RF23C



VSWR

RF047-A: 1.35 max.
RF086: 1.40 max.
RF085: 1.40 max.
RF23C: 1.40 max.

SERIES	END 1 CONNECTOR	END 2 CONNECTOR	OVERALL LENGTH
RF047-A = (1.2 mm) .047" overshield DIA 29 AWG millimeter wave cable RF086 = (2.18 mm) .086" overshield DIA 23 AWG millimeter wave cable RF085 = (2.16 mm) .085" overshield DIA 24 AWG millimeter wave cable RF23C = MWC-2350CU-01 millimeter wave cable with copper foil shield	-92SJ = 2.92 mm Straight Jack -92SP = 2.92 mm Straight Plug	ALSO AVAILABLE 1.35 mm, 1.85 mm, 2.40 mm, SMPM = RF047-A 1.85 mm, 2.40 mm, SMPM = RF086 2.40 mm = RF085 2.40 mm, SMPM = RF23C	-"XXXX" = Overall Length in millimeters -0100 (100 mm) 3.94" minimum (RF047-A, RF085, RF086,) -0152 (0152 mm) 5.984" minimum (RF23C)

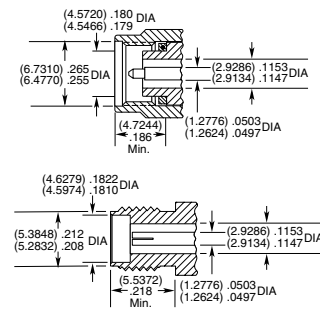
2.92 mm Cable Connectors

PRF92



CONNECTORS FOR INDUSTRY STANDARD CABLES	
PRF92-P-C-EE-405-SD	RG 405, .085, semi-rigid
PRF92-P-C-EE-085A-SD	.085, semi-rigid, 23AWG
PRF92-P-C-EP-160-SS	Semflex HP160, low loss flexible
PRF92-P-C-EP-150B-SS	IW 1501, low loss flexible
PRF92-P-C-EP-142-SS	Harbour LL142, low loss flexible
PRF92-J-C-EP-085-SS	Harbour SS405, flexible alternative to RG 405
PRF92-J-C-EP-085-BS	Harbour SS405, flexible alternative to RG 405
PRF92-P-C-EP-085-SS	Harbour SS405, flexible alternative to RG 405
PRF92-P-C-EE-402-SD	RG 402, .141, semi-rigid
PRF92-P-C-EP-190-SS	Semflex HP190, low loss flexible
PRF92-J-C-EP-160-SS	Semflex HP160, low loss flexible
PRF92-P-C-EP-120A-SS	Semflex HP120, low loss flexible
PRF92-P-C-EP-140-SS	Dynawave DF140, low loss flexible
PRF92-P-C-EP-047D-SS	.047, semi-rigid
PRF92-J-C-EP-047D-SS	.047, semi-rigid
PRF92-P-C-EP-150-SS	Dynawave DF150, low loss flexible
PRF92-P-C-EE-118-SD	Haverhill HC35004, .118, semi-rigid
PRF92-J-C-EP-402-SS	RG 402, .141, semi-rigid
PRF92-J-C-EP-047D-4S	.047, semi-rigid
PRF92-J-C-EP-405-4S	RG 405, .085, semi-rigid
PRF92-P-C-EE-405-SD	RG 405, .085, semi-rigid
PRF92-P-C-EP-086-SS	.086 Temp-Flex, low loss flexible
PRF92-P-C-EP-200-SS	Times Max Gain 200, low loss flexible

INTERFACE STANDARD



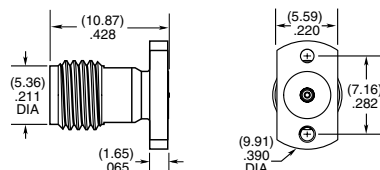
P-C = Cable Plug
 J-P = Cable Jack
 EE = Plating (50 μ" Gold center contact & outer contact)
 EP = Plating (50 μ" Gold center contact, passivated outer contact)
 SS = Straight, Solder Clamp
 SD = Straight, Direct Solder
 BS = Bulkhead, Solder Clamp
 4S = 4-hole flange, Solder Clamp

2.92 mm Board Connectors

Cable Mates:
 RF047-A, RF085, RF086, RF23C



292	GENDER	TYPE	PLATING	ORIENTATION	TERMINATION	OPTION	PACKAGING
	-J = Jack	-P = PCB Mount	-EP = 50 μ" (1.27 μm) Gold center contact, Passivated outer contact	-ST = Straight	-CM = Compression Mount Stripline -CMM = Compression Mount Microstrip	-1 = Without Screws -2 = With Screws	Leave blank for tray packaging -K = Individually bagged



SMPM TO 65 GHz

SMPM Cable Assemblies

RF047-A, RF086, RF23C



VSWR

RF047-A: 1.40 max.
RF086: 1.40 max.
RF23C: 1.40 max.

SERIES	END 1 CONNECTOR	END 2 CONNECTOR	OVERALL LENGTH
RF047-A = (1.2 mm) .047" overshield DIA 29 AWG millimeter cable RF086 = (2.18 mm) .086" overshield DIA 23 AWG millimeter cable RF23C = MWC-2350CU-01 millimeter wave cable with copper foil shield	-MOSP = SMPM Straight Plug, Full Detent -MOSJ = SMPM Straight Jack -MORJ = SMPM Right-angle Jack (RF047-A only) -MOBJ = SMPM Straight Bulkhead Jack (RF047-A only)	-“XXXX” = Overall Length in millimeters -0100 (0100 mm) 3.94" minimum (RF047-A, RF086) -0152 (0152 mm) 5.984" minimum (RF23C)	

ALSO AVAILABLE

1.85 mm, 2.40 mm, 2.92 mm = RF086
 1.35 mm, 1.85 mm, 2.40 mm,
 2.92 mm = RF047-A
 2.40 mm, 2.92 mm = RF23C

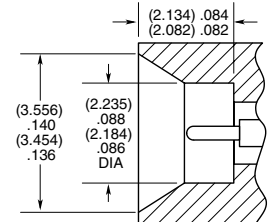
SMPM Cable Connectors

PRFM0



CONNECTORS FOR INDUSTRY STANDARD CABLES	
PRFM0-J-C-EE-047A-BD	.047 Temp-Flex, low loss flexible, 29 AWG
PRFM0-J-C-EE-085-BD	Harbour SS405, flexible alternative to RG 405
PRFM0-J-C-EE-047A-RD	.047 Temp-Flex, low loss flexible, 29 AWG
PRFM0-J-C-EE-086-SD	.086 Temp-Flex, low loss flexible
PRFM0-J-C-EE-047B-SD	.047 Temp-Flex, low loss flexible, 28 AWG
PRFM0-P-C-HG-047A-SD	.047 Temp-Flex, low loss flexible, 29 AWG
PRFM0-J-C-HG-047A-SD	.047 Temp-Flex, low loss flexible, 29 AWG

INTERFACE STANDARD (CATCHERS MITT)

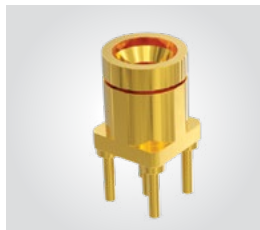


P-C = Cable Plug
 J-C = Cable Jack
 EE = Plating (50 μ" Gold center contact, & outer contact)
 HG = Plating (30 μ" Gold center contact, 10 μ" Gold outer contact)
 SD = Straight, Direct Solder
 BD = Bulkhead, Direct Solder
 RD = Right-angle, Direct Solder

SMPM Board Connectors

SMPM-SM, SMPM-TH, SMPM-RA

Cable Mates:
 RF047-A, RF086, RF23C

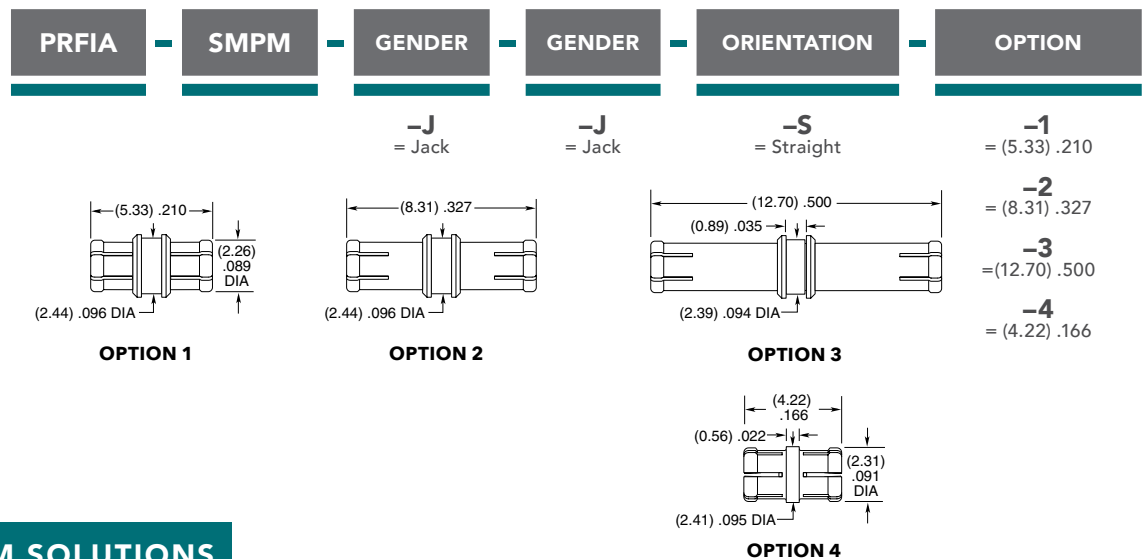


SMPM	GENDER	TYPE	PLATING	ORIENTATION	TERMINATION	1
	-PF = Full Detent -PS = Smooth Bore -PC = Catchers Mitt (-ST-TH only)	-P = PCB Mount	-HG = 30 μ" (0.76 μm) Gold center contact, 10 μ" (0.25 μm) Gold outer contact (-ST only) -HF = 30 μ" (0.76 μm) Gold center contact, 3 μ" (0.08 μm) Gold outer contact (-RA only) -EE = 50 μ" (1.27 μm) Gold center contact and outer body (-SM only)	-ST = Straight -RA = Right-angle (-TH required)	-EM = Drop-in Edge Mount (-ST only) -TH = Through-hole -SM = Surface Mount (-ST only)	
	<p>-ST-SM-1</p>	<p>-ST-EM-1</p>	<p>-ST-TH-1</p>	<p>-RA-TH-1</p>		

SMPM TO 65 GHz

SMPM Bullet Adaptor PRFIA

Mates With:
SMPM, GPPB



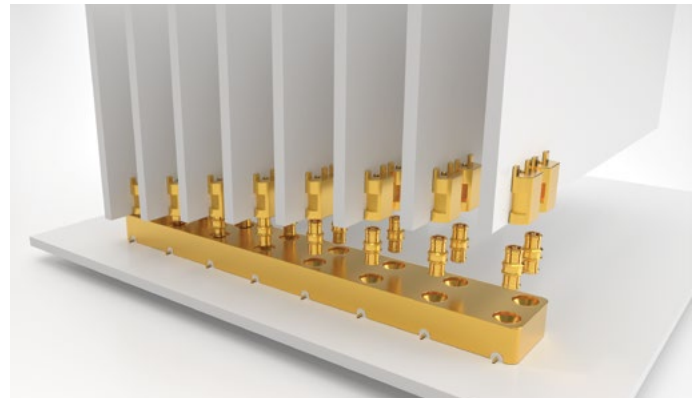
GANGED SMPM SOLUTIONS

BOARD-TO-BOARD GANGED, MULTI-POSITION SMPM BLOCKS

Series: GPPB
Mates with: PRFIA

FEATURES

- High-density, space-saving design
- 8.33 mm (.328") pitch (3.56 mm (.140") pitch in development)
- Push-on interface with varying retention forces
- Bullet adaptors enable blind mate applications accommodating axial and radial misalignment
- Board height options: 4.22 mm (.166"), 5.33 mm (.210"), 8.31 mm (.327"), 12.70 mm (.500")

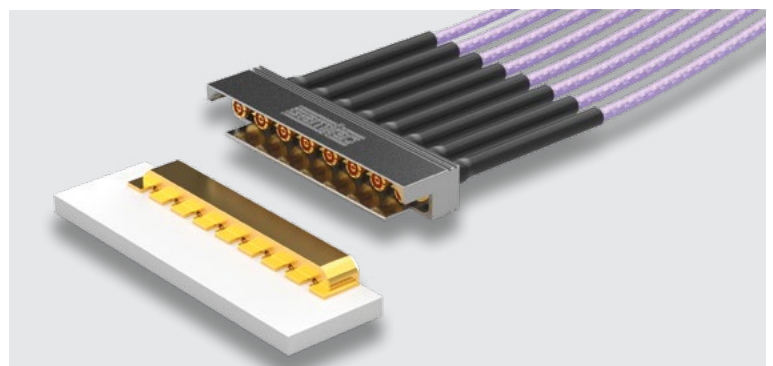


CABLE-TO-BOARD GANGED, MULTI-POSITION SMPM CABLE ASSEMBLY

Cable Assembly: GC47
Board Mate: GPPC

FEATURES

- High-density, space-saving design
- Pitch: 3.56 mm (.140")
- Push-on interface for quick installation
- .047 low-loss flexible microwave/millimeter wave cable



Applications include: 5G wireless, mmWave, military/defense, telecom, radar, test & measurement, applications that are space limited and require high operating frequency