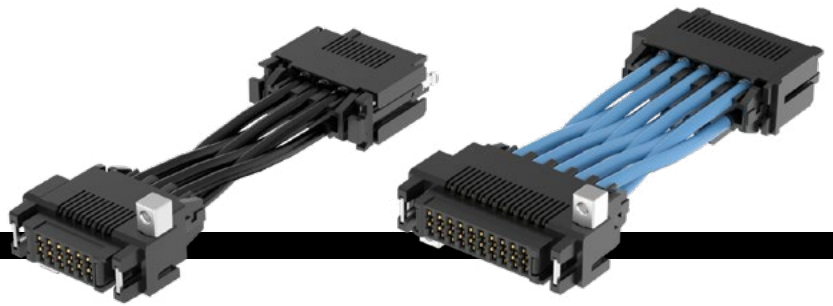


ULTRA MICRO CABLE-TO-CABLE



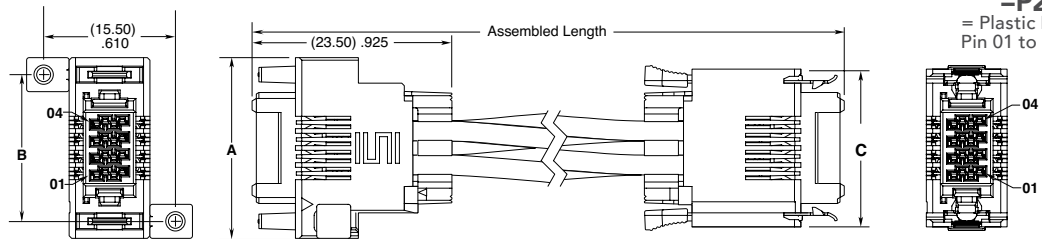
SERIES	NO. OF POSITIONS	PLATING OPTION	WIRE GAUGE	LENGTH	PINOUT
<b>UMPI</b> = Ultra Micro PVC Cable  <b>UMPIT</b> = Ultra Micro Blue *Teflon Fluoropolymer Cable	-02, -03, -04, -05, -06, -07, -08, -09, -10	-L = 10 μ" (0.25 μm) Gold on contact, Tin on tail  -S = 30 μ" (0.76 μm) Gold on contact, Tin on tail  -T = Tin	-16 = 16 AWG  -16C = 16C AWG Color Coded Cable (not available with UMPIT)  -18 = 18 AWG  -18C = 18C AWG Color Coded Cable (not available with UMPIT)	-"XX.X" = Assembled Length in Inches  Single ended = (76.2 mm) 03.0" min.  Double ended = (101.6 mm) 04.0" min. (2-4 positions)  Double ended = (127.0 mm) 05.0" min. (5-10 positions)	(Leave blank for Single ended)  -M1 = Metal Latch Pin 01 to Pin 01  -M2 = Metal Latch Pin 01 to Pin N  -P1 = Plastic Latch Pin 01 to Pin 01  -P2 = Plastic Latch Pin 01 to Pin N

UMPIT PRELIMINARY

**UMPI(T)**  
Cable Mates:  
UMPE(T)  
End 2 Mates:  
UMPE(T), UMPIT

**SPECIFICATIONS**

**Insulator Material:** Black LCP  
**Contact Material:** Copper Alloy  
**Plating:** Sn or Au over 50 μ" (1.27 μm) Ni  
**Wire:** 16 or 18 AWG  
**Voltage Rating:** UMPI = 300 V  
 UMPIT (16 AWG) = 600 V  
 UMPIT (18 AWG) = 300 V



CABLE COLOR CODING	PIN	COLOR
1	BROWN	
2	RED	
3	ORANGE	
4	YELLOW	
5	GREEN	
6	BLUE	
7	VIOLET	
8	GRAY	
9	WHITE	
10	BLACK	

NO. OF POSITIONS	A	B	C
-02	(17.25) .679	(13.25) .522	(14.55) .573
-03	(19.25) .758	(15.25) .600	(16.55) .652
-04	(21.25) .837	(17.25) .679	(18.55) .730
-05	(23.25) .915	(19.25) .758	(20.55) .809
-06	(25.25) .994	(21.25) .837	(22.55) .888
-07	(27.25) 1.073	(23.25) .915	(24.55) .967
-08	(29.25) 1.152	(25.25) .994	(26.55) 1.045
-09	(31.25) 1.230	(27.25) 1.073	(28.55) 1.124
-10	(33.25) 1.309	(29.25) 1.152	(30.55) 1.203

\*Teflon™ is a trademark of The Chemours Company FC, LLC used under license by Samtec.

**Notes:** Teflon™ Fluoropolymer cable is intended for crimp only. Contact Samtec for solderable cable applications.

For wiring option information refer to drawings on web.

Some lengths, styles and options are non-standard, non-returnable

View complete specifications at: [samtec.com?UMPI](http://samtec.com?UMPI) & [samtec.com?UMPIT](http://samtec.com?UMPIT)

**UMPI CABLE HOLDER (Required for use with IMPC)**

SERIES	NUMBER OF POSITIONS	LEAD STYLE
IMPC	-02, -03, -04, -05, -06, -07, -08, -09, -10	01 = 16 AWG 02 = 18 AWG

IMPC	NO. OF POSITIONS	LATCH OPTION	CC489	01	PLATING	PACKAGING
------	------------------	--------------	-------	----	---------	-----------

-02, -03, -04, -05,  
-06, -07, -08, -09, -10

-P1  
= Panel Mount

-L  
= 10 μ" (0.25 μm) Gold on contact, Tin on tail

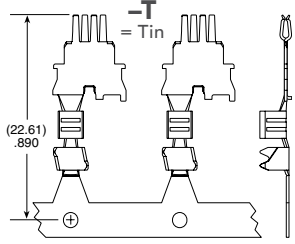
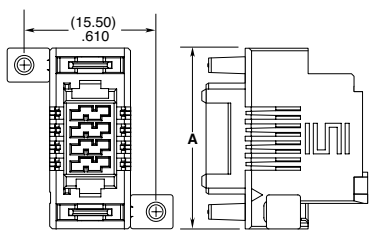
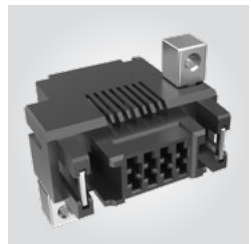
-R  
= Full Reel (5,000 Contacts)

-S  
= 30 μ" (0.76 μm) Gold on contact, Tin on tail

-M  
= Mini Reel (1,000 Contacts)

-T  
= Tin

-B  
= Bubble Bag (35 Contacts)



**TOOLING**

Hand Tool: CAT-HT-489-1618-13

Mini Applicator: CAT-MC-489-1618-XX-01

View complete specifications at: [samtec.com?IMPC](http://samtec.com?IMPC) & [samtec.com?CC489](http://samtec.com?CC489)

**Note:** Some lengths, styles and options are non-standard, non-returnable.