

Serie 312

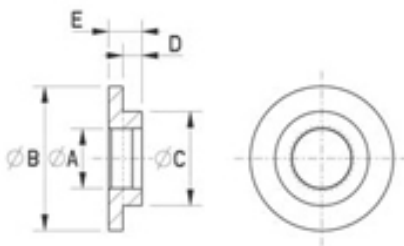


Technische Daten

Material: PA (glasfaserverstärkt)

Farbe: schwarz

Verbindet Isolationsfähigkeit mit mechanischer Festigkeit



Alle Masse in mm

| Artikelnummer | Farbe | A | B | C | D | E | F |
|-----------------|---------|------|------|-----|-----|-----|---|
| 312 0832 599 35 | schwarz | 2.1 | 8 | 4.5 | 4.5 | 5.5 | |
| 312 0839 599 35 | schwarz | 2.6 | 8 | 4.5 | 1.6 | 4.2 | |
| 312 0802 599 35 | schwarz | 2.6 | 8 | 4.8 | 1.1 | 2.1 | |
| 312 0833 599 35 | schwarz | 2.7 | 5 | 3.2 | 1.4 | 2.4 | |
| 312 0812 599 35 | schwarz | 3 | 5.5 | 3.5 | 2.5 | 3.5 | |
| 312 0849 599 35 | schwarz | 3 | 5.9 | 3.5 | 0.6 | 1.8 | |
| 312 0843 599 35 | schwarz | 3.1 | 10 | 3.4 | 8 | 9 | |
| 312 0836 599 35 | schwarz | 2,95 | 6 | 3.5 | 1.3 | 2.3 | |
| 312 0819 599 35 | schwarz | 3.1 | 7.5 | 3.5 | 1.3 | 2.3 | |
| 312 0801 599 35 | schwarz | 3.1 | 7.5 | 3.5 | 2.5 | 3.5 | |
| 312 0810 599 35 | schwarz | 3.1 | 7.5 | 3.5 | 2.5 | 6.5 | |
| 312 0838 599 35 | schwarz | 3.1 | 7.5 | 3.9 | 3.5 | 4.5 | |
| 312 0814 599 35 | schwarz | 3.1 | 7.5 | 3.9 | 4.5 | 6 | |
| 312 0846 599 35 | schwarz | 3.1 | 10 | 4.2 | 8 | 10 | |
| 312 0809 599 35 | schwarz | 3.5 | 7 | 4.9 | 7.4 | 8.2 | |
| 312 0806 599 35 | schwarz | 3.5 | 7 | 5.1 | 2.2 | 3 | |
| 312 0842 599 35 | schwarz | 4 | 10 | 4.4 | 8 | 9 | |
| 312 0850 599 35 | schwarz | 4 | 9.3 | 6.3 | 1.3 | 2.5 | |
| 312 0847 599 35 | schwarz | 4.1 | 10 | 5.2 | 10 | 12 | |
| 312 0831 599 35 | schwarz | 4.5 | 8 | 6 | 3.2 | 4 | |
| 312 0804 599 35 | schwarz | 4.5 | 15.7 | 9.7 | 8 | 13 | |
| 312 0821 599 35 | schwarz | 5.1 | 12 | 6.4 | 15 | 16 | |
| 312 0844 599 35 | schwarz | 5.1 | 12 | 6.4 | 15 | 17 | |
| 312 0828 599 35 | schwarz | 5.2 | 12 | 5.5 | 2 | 3 | |
| 312 0808 599 02 | schwarz | 5.2 | 12 | 5.5 | 4 | 5 | |
| 312 0808 599 35 | schwarz | 5.2 | 12 | 5.5 | 4 | 5 | |

Serie 312

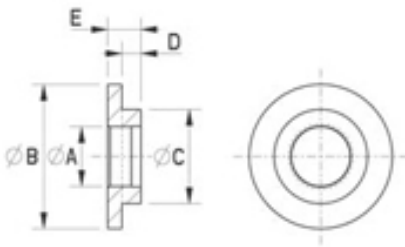


Technische Daten

Material: PA (glasfaserverstärkt)

Farbe: schwarz

Verbindet Isolationsfähigkeit mit mechanischer Festigkeit



Alle Masse in mm

| Artikelnummer | Farbe | A | B | C | D | E | F |
|-----------------|---------|------|----|------|------|------|---|
| 312 0826 599 35 | schwarz | 5.2 | 12 | 6.2 | 10 | 11 | |
| 312 0816 599 35 | schwarz | 5.2 | 12 | 6.9 | 8 | 11 | |
| 312 0820 599 35 | schwarz | 6.1 | 12 | 7.8 | 15 | 16 | |
| 312 0845 599 35 | schwarz | 6.1 | 12 | 7.8 | 15 | 17 | |
| 312 0817 599 35 | schwarz | 6.2 | 12 | 6.5 | 2 | 3 | |
| 312 0811 599 02 | schwarz | 6.2 | 12 | 6.5 | 4 | 4.5 | |
| 312 0811 599 35 | schwarz | 6.2 | 12 | 6.5 | 4 | 4.5 | |
| 312 0807 599 35 | schwarz | 6.2 | 12 | 6.5 | 4 | 5 | |
| 312 0827 599 35 | schwarz | 6.2 | 12 | 7.2 | 10 | 11 | |
| 312 0825 599 35 | schwarz | 6.2 | 12 | 7.9 | 1 | 2 | |
| 312 0824 599 35 | schwarz | 6.2 | 12 | 7.9 | 2 | 4 | |
| 312 0815 599 35 | schwarz | 6.2 | 12 | 7.9 | 8 | 11 | |
| 312 0818 599 35 | schwarz | 6.4 | 16 | 10 | 2.3 | 3.5 | |
| 312 0834 599 35 | schwarz | 6.5 | 13 | 9.6 | 1.3 | 1.9 | |
| 312 0805 599 35 | schwarz | 6.5 | 25 | 13 | 6 | 10.5 | |
| 312 0813 599 35 | schwarz | 6.5 | 25 | 13 | 8.5 | 13 | |
| 312 0835 599 35 | schwarz | 8.2 | 19 | 9.4 | 1.7 | 2.5 | |
| 312 0823 599 35 | schwarz | 8.2 | 14 | 9.9 | 16 | 18 | |
| 312 0822 599 35 | schwarz | 8.5 | 25 | 12.8 | 9 | 13.5 | |
| 312 0803 599 35 | schwarz | 8.5 | 25 | 13 | 6 | 10.5 | |
| 312 0837 599 35 | schwarz | 10.2 | 16 | 11 | 1 | 2 | |
| 312 0829 599 35 | schwarz | 10.2 | 28 | 12.5 | 2.5 | 3.7 | |
| 312 0840 599 35 | schwarz | 10.2 | 28 | 17.5 | 2.5 | 6.5 | |
| 312 0841 599 35 | schwarz | 10.5 | 21 | 14.5 | 32 | 35 | |
| 312 0830 599 35 | schwarz | 12.5 | 20 | 16 | 1 | 2 | |
| 312 0848 599 35 | schwarz | 12.5 | 21 | 14.5 | 32.5 | 35.5 | |