

DISTEX® - Spacer with thread (outside/outside)
nylon with brass (CuZn39Pb3) thread

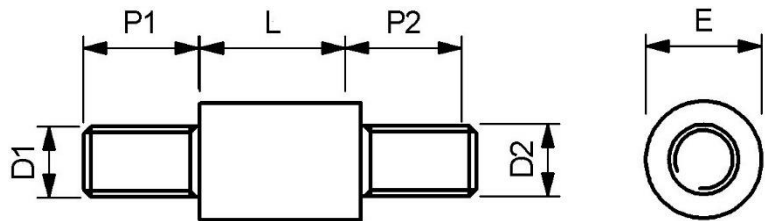
Spacer with external thread made of brass.

| | |
|--------------------------|--|
| Material sleeve: | nylon |
| Material thread: | brass (CuZn39Pb3) |
| Thread sizes: | M2.5, M3, M4, M5, M6, M8, M10 (D1 + D2) |
| Outer diameter: | 8, 9.5, 12.7, 15.9, 19, 25mm (E) |
| Hexagon sizes: | 6, 6.4, 7, 8, 9.5 (SW) |
| Versions: | type 1 round type 2 round and hexagon type 3 hexagon |
| Längentoleranzen: | according to ISO 2768-1M (medium) |
| RoHS konform: | according to 2011/65/EU appendix III, derogation 6c |

We have a large stock range of these items in various materials, both plastic and metal. Further information and data sheets are available on our website.

Special versions in other dimensions and other materials are available on request via our [configuration form](#).

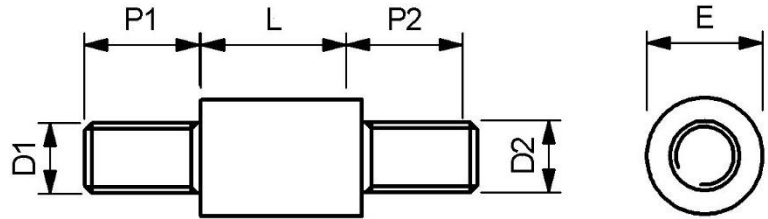
Further lengths up to 90mm, are available in 1mm increments.



Round (type: 1), Thread (D1 + D2): M3, Outer diameter (E): 8.0

| Part | L | P1 | P2 | Part | L | P1 | P2 |
|---------------|------|-----|-----|---------------|------|-----|-----|
| 4R030080N-010 | 10.0 | 6.0 | 6.0 | 4R030080N-035 | 35.0 | 6.0 | 6.0 |
| 4R030080N-013 | 13.0 | 6.0 | 6.0 | 4R030080N-036 | 36.0 | 6.0 | 6.0 |
| 4R030080N-014 | 14.0 | 6.0 | 6.0 | 4R030080N-037 | 37.0 | 6.0 | 6.0 |
| 4R030080N-015 | 15.0 | 6.0 | 6.0 | 4R030080N-038 | 38.0 | 6.0 | 6.0 |
| 4R030080N-016 | 16.0 | 6.0 | 6.0 | 4R030080N-039 | 39.0 | 6.0 | 6.0 |
| 4R030080N-017 | 17.0 | 6.0 | 6.0 | 4R030080N-040 | 40.0 | 6.0 | 6.0 |
| 4R030080N-018 | 18.0 | 6.0 | 6.0 | 4R030080N-041 | 41.0 | 6.0 | 6.0 |
| 4R030080N-019 | 19.0 | 6.0 | 6.0 | 4R030080N-042 | 42.0 | 6.0 | 6.0 |
| 4R030080N-020 | 20.0 | 6.0 | 6.0 | 4R030080N-043 | 43.0 | 6.0 | 6.0 |
| 4R030080N-021 | 21.0 | 6.0 | 6.0 | 4R030080N-044 | 44.0 | 6.0 | 6.0 |
| 4R030080N-022 | 22.0 | 6.0 | 6.0 | 4R030080N-045 | 45.0 | 6.0 | 6.0 |
| 4R030080N-023 | 23.0 | 6.0 | 6.0 | 4R030080N-046 | 46.0 | 6.0 | 6.0 |
| 4R030080N-024 | 24.0 | 6.0 | 6.0 | 4R030080N-047 | 47.0 | 6.0 | 6.0 |
| 4R030080N-025 | 25.0 | 6.0 | 6.0 | 4R030080N-048 | 48.0 | 6.0 | 6.0 |
| 4R030080N-026 | 26.0 | 6.0 | 6.0 | 4R030080N-049 | 49.0 | 6.0 | 6.0 |
| 4R030080N-027 | 27.0 | 6.0 | 6.0 | 4R030080N-050 | 50.0 | 6.0 | 6.0 |
| 4R030080N-028 | 28.0 | 6.0 | 6.0 | 4R030080N-055 | 55.0 | 6.0 | 6.0 |
| 4R030080N-029 | 29.0 | 6.0 | 6.0 | 4R030080N-057 | 57.0 | 6.0 | 6.0 |
| 4R030080N-030 | 30.0 | 6.0 | 6.0 | 4R030080N-060 | 60.0 | 6.0 | 6.0 |
| 4R030080N-031 | 31.0 | 6.0 | 6.0 | 4R030080N-063 | 63.0 | 6.0 | 6.0 |
| 4R030080N-032 | 32.0 | 6.0 | 6.0 | 4R030080N-065 | 65.0 | 6.0 | 6.0 |
| 4R030080N-033 | 33.0 | 6.0 | 6.0 | 4R030080N-070 | 70.0 | 6.0 | 6.0 |
| 4R030080N-034 | 34.0 | 6.0 | 6.0 | 4R030080N-076 | 76.0 | 6.0 | 6.0 |

DISTEX® - Spacer with thread (outside/outside)
nylon with brass (CuZn39Pb3) thread



Round (type: 1), Thread (D1 + D2): M4, Outer diameter (E): 8.0

| Part | L | P1 | P2 |
|---------------|------|-----|-----|
| 4R040080N-013 | 13.0 | 6.0 | 6.0 |
| 4R040080N-014 | 14.0 | 6.0 | 6.0 |
| 4R040080N-015 | 15.0 | 6.0 | 6.0 |
| 4R040080N-016 | 16.0 | 6.0 | 6.0 |
| 4R040080N-017 | 17.0 | 6.0 | 6.0 |
| 4R040080N-018 | 18.0 | 6.0 | 6.0 |
| 4R040080N-019 | 19.0 | 6.0 | 6.0 |
| 4R040080N-020 | 20.0 | 6.0 | 6.0 |
| 4R040080N-021 | 21.0 | 6.0 | 6.0 |
| 4R040080N-022 | 22.0 | 6.0 | 6.0 |
| 4R040080N-023 | 23.0 | 6.0 | 6.0 |
| 4R040080N-024 | 24.0 | 6.0 | 6.0 |
| 4R040080N-025 | 25.0 | 6.0 | 6.0 |
| 4R040080N-026 | 26.0 | 6.0 | 6.0 |
| 4R040080N-027 | 27.0 | 6.0 | 6.0 |
| 4R040080N-028 | 28.0 | 6.0 | 6.0 |
| 4R040080N-029 | 29.0 | 6.0 | 6.0 |
| 4R040080N-030 | 30.0 | 6.0 | 6.0 |
| 4R040080N-031 | 31.0 | 6.0 | 6.0 |
| 4R040080N-032 | 32.0 | 6.0 | 6.0 |
| 4R040080N-033 | 33.0 | 6.0 | 6.0 |
| 4R040080N-034 | 34.0 | 6.0 | 6.0 |
| 4R040080N-035 | 35.0 | 6.0 | 6.0 |
| 4R040080N-036 | 36.0 | 6.0 | 6.0 |

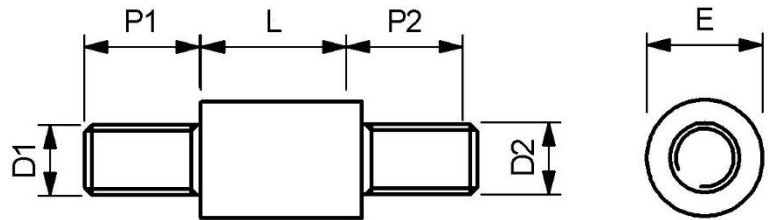
| Part | L | P1 | P2 |
|---------------|------|-----|-----|
| 4R040080N-037 | 37.0 | 6.0 | 6.0 |
| 4R040080N-038 | 38.0 | 6.0 | 6.0 |
| 4R040080N-039 | 39.0 | 6.0 | 6.0 |
| 4R040080N-040 | 40.0 | 6.0 | 6.0 |
| 4R040080N-041 | 41.0 | 6.0 | 6.0 |
| 4R040080N-042 | 42.0 | 6.0 | 6.0 |
| 4R040080N-043 | 43.0 | 6.0 | 6.0 |
| 4R040080N-044 | 44.0 | 6.0 | 6.0 |
| 4R040080N-045 | 45.0 | 6.0 | 6.0 |
| 4R040080N-046 | 46.0 | 6.0 | 6.0 |
| 4R040080N-047 | 47.0 | 6.0 | 6.0 |
| 4R040080N-048 | 48.0 | 6.0 | 6.0 |
| 4R040080N-050 | 50.0 | 6.0 | 6.0 |
| 4R040080N-054 | 54.0 | 6.0 | 6.0 |
| 4R040080N-055 | 55.0 | 6.0 | 6.0 |
| 4R040080N-057 | 57.0 | 6.0 | 6.0 |
| 4R040080N-060 | 60.0 | 6.0 | 6.0 |
| 4R040080N-063 | 63.0 | 6.0 | 6.0 |
| 4R040080N-065 | 65.0 | 6.0 | 6.0 |
| 4R040080N-070 | 70.0 | 6.0 | 6.0 |
| 4R040080N-075 | 75.0 | 6.0 | 6.0 |
| 4R040080N-076 | 76.0 | 6.0 | 6.0 |
| 4R040080N-080 | 80.0 | 6.0 | 6.0 |

Round (type: 1), Thread (D1 + D2): M5, Outer diameter (E): 9.5

| Part | L | P1 | P2 |
|---------------|------|------|------|
| 4R050095N-019 | 19.0 | 10.0 | 10.0 |
| 4R050095N-020 | 20.0 | 10.0 | 10.0 |
| 4R050095N-022 | 22.0 | 10.0 | 10.0 |
| 4R050095N-025 | 25.0 | 10.0 | 10.0 |
| 4R050095N-030 | 30.0 | 10.0 | 10.0 |
| 4R050095N-032 | 32.0 | 10.0 | 10.0 |
| 4R050095N-035 | 35.0 | 10.0 | 10.0 |
| 4R050095N-038 | 38.0 | 10.0 | 10.0 |
| 4R050095N-040 | 40.0 | 10.0 | 10.0 |
| 4R050095N-045 | 45.0 | 10.0 | 10.0 |

| Part | L | P1 | P2 |
|---------------|------|------|------|
| 4R050095N-050 | 50.0 | 10.0 | 10.0 |
| 4R050095N-055 | 55.0 | 10.0 | 10.0 |
| 4R050095N-057 | 57.0 | 10.0 | 10.0 |
| 4R050095N-060 | 60.0 | 10.0 | 10.0 |
| 4R050095N-063 | 63.0 | 10.0 | 10.0 |
| 4R050095N-065 | 65.0 | 10.0 | 10.0 |
| 4R050095N-070 | 70.0 | 10.0 | 10.0 |
| 4R050095N-076 | 76.0 | 10.0 | 10.0 |
| 4R050095N-078 | 78.0 | 10.0 | 10.0 |

DISTEX® - Spacer with thread (outside/outside)
nylon with brass (CuZn39Pb3) thread



Round (type: 1), Thread (D1 + D2): M6, Outer diameter (E): 12.7

| Part | L | P1 | P2 |
|---------------|------|------|------|
| 4R060127N-025 | 25.0 | 12.7 | 12.7 |
| 4R060127N-030 | 30.0 | 12.7 | 12.7 |
| 4R060127N-032 | 32.0 | 12.7 | 12.7 |
| 4R060127N-035 | 35.0 | 12.7 | 12.7 |

| Part | L | P1 | P2 |
|---------------|------|------|------|
| 4R060127N-038 | 38.0 | 12.7 | 12.7 |
| 4R060127N-040 | 40.0 | 12.7 | 12.7 |
| 4R060127N-045 | 45.0 | 12.7 | 12.7 |
| 4R060127N-050 | 50.0 | 12.7 | 12.7 |

Round (type: 1), Thread (D1 + D2): M8, Outer diameter (E): 15.9

| Part | L | P1 | P2 |
|---------------|------|------|------|
| 4R080159N-030 | 30.0 | 14.0 | 14.0 |
| 4R080159N-035 | 35.0 | 14.0 | 14.0 |
| 4R080159N-040 | 40.0 | 14.0 | 14.0 |
| 4R080159N-045 | 45.0 | 14.0 | 14.0 |
| 4R080159N-050 | 50.0 | 14.0 | 14.0 |
| 4R080159N-055 | 55.0 | 14.0 | 14.0 |
| 4R080159N-060 | 60.0 | 14.0 | 14.0 |

| Part | L | P1 | P2 |
|---------------|------|------|------|
| 4R080159N-065 | 65.0 | 14.0 | 14.0 |
| 4R080159N-070 | 70.0 | 14.0 | 14.0 |
| 4R080159N-075 | 75.0 | 14.0 | 14.0 |
| 4R080159N-080 | 80.0 | 14.0 | 14.0 |
| 4R080159N-085 | 85.0 | 14.0 | 14.0 |
| 4R080159N-090 | 90.0 | 14.0 | 14.0 |

Round (type: 1), Thread (D1 + D2): M8, Outer diameter (E): 19.0

| Part | L | P1 | P2 |
|---------------|------|------|------|
| 4R080190N-030 | 30.0 | 14.0 | 14.0 |
| 4R080190N-035 | 35.0 | 14.0 | 14.0 |
| 4R080190N-040 | 40.0 | 14.0 | 14.0 |
| 4R080190N-045 | 45.0 | 14.0 | 14.0 |
| 4R080190N-050 | 50.0 | 14.0 | 14.0 |
| 4R080190N-055 | 55.0 | 14.0 | 14.0 |
| 4R080190N-060 | 60.0 | 14.0 | 14.0 |

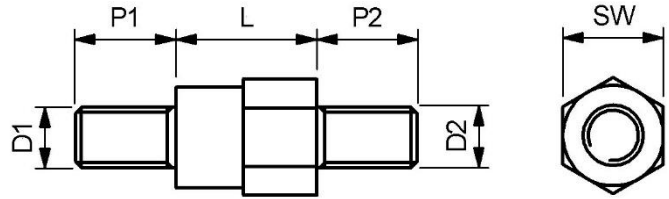
| Part | L | P1 | P2 |
|---------------|------|------|------|
| 4R080190N-065 | 65.0 | 14.0 | 14.0 |
| 4R080190N-070 | 70.0 | 14.0 | 14.0 |
| 4R080190N-075 | 75.0 | 14.0 | 14.0 |
| 4R080190N-080 | 80.0 | 14.0 | 14.0 |
| 4R080190N-085 | 85.0 | 14.0 | 14.0 |
| 4R080190N-090 | 90.0 | 14.0 | 14.0 |

Round (type: 1), Thread D1 + D2): M10, Outer diameter (E): 25.0

| Part | L | P1 | P2 |
|---------------|------|------|------|
| 4R100250N-040 | 40.0 | 20.0 | 20.0 |
| 4R100250N-045 | 45.0 | 20.0 | 20.0 |
| 4R100250N-050 | 50.0 | 20.0 | 20.0 |
| 4R100250N-055 | 55.0 | 20.0 | 20.0 |
| 4R100250N-060 | 60.0 | 20.0 | 20.0 |
| 4R100250N-065 | 65.0 | 20.0 | 20.0 |

| Part | L | P1 | P2 |
|---------------|------|------|------|
| 4R100250N-070 | 70.0 | 20.0 | 20.0 |
| 4R100250N-075 | 75.0 | 20.0 | 20.0 |
| 4R100250N-080 | 80.0 | 20.0 | 20.0 |
| 4R100250N-085 | 85.0 | 20.0 | 20.0 |
| 4R100250N-090 | 90.0 | 20.0 | 20.0 |

DISTEX® - Spacer with thread (outside/outside)
nylon with brass (CuZn39Pb3) thread



Round + hexagon (type: 2), Thread (D1 + D2): M2.5, Hexagon size (SW): 6.0

| Part | L | P1 | P2 |
|--------------|-----|-----|-----|
| 4S025060N-04 | 4.0 | 6.0 | 6.0 |
| 4S025060N-05 | 5.0 | 6.0 | 6.0 |
| 4S025060N-06 | 6.0 | 6.0 | 6.0 |
| 4S025060N-07 | 7.0 | 6.0 | 6.0 |
| 4S025060N-08 | 8.0 | 6.0 | 6.0 |

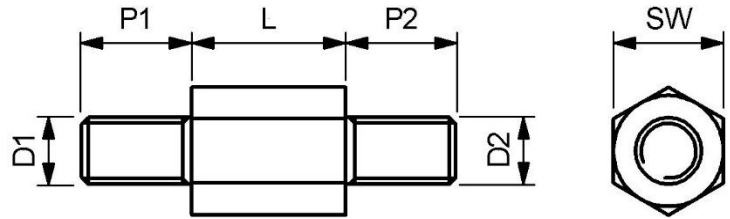
| Part | L | P1 | P2 |
|--------------|------|-----|-----|
| 4S025060N-09 | 9.0 | 6.0 | 6.0 |
| 4S025060N-10 | 10.0 | 6.0 | 6.0 |
| 4S025060N-11 | 11.0 | 6.0 | 6.0 |
| 4S025060N-12 | 12.0 | 6.0 | 6.0 |

Round + hexagon (type: 2), Thread (D1 + D2): M3, Hexagon size (SW): 7.0

| Part | L | P1 | P2 |
|--------------|-----|-----|-----|
| 4S030070N-04 | 4.0 | 6.0 | 6.0 |
| 4S030070N-05 | 5.0 | 6.0 | 6.0 |
| 4S030070N-06 | 6.0 | 6.0 | 6.0 |
| 4S030070N-07 | 7.0 | 6.0 | 6.0 |
| 4S030070N-08 | 8.0 | 6.0 | 6.0 |

| Part | L | P1 | P2 |
|--------------|------|-----|-----|
| 4S030070N-09 | 9.0 | 6.0 | 6.0 |
| 4S030070N-10 | 10.0 | 6.0 | 6.0 |
| 4S030070N-11 | 11.0 | 6.0 | 6.0 |
| 4S030070N-12 | 12.0 | 6.0 | 6.0 |

DISTEX® - Spacer with thread (outside/outside)
nylon with brass (CuZn39Pb3) thread



Hexagon (type: 3), Thread (D1 + D2): M3, Hexagon size (SW): 6.4

| Part | L | P1 | P2 |
|--------------|------|-----|-----|
| 3S030635N-12 | 12.0 | 6.0 | 6.0 |
| 3S030635N-18 | 18.0 | 6.0 | 6.0 |

| Part | L | P1 | P2 |
|--------------|------|-----|-----|
| 3S030635N-20 | 20.0 | 6.0 | 6.0 |
| 3S030635N-25 | 25.0 | 6.0 | 6.0 |

Hexagon (type: 3), Thread (D1 + D2): M4, Hexagon size (SW): 8.0

| Part | L | P1 | P2 |
|--------------|------|-----|-----|
| 3S040080N-15 | 15.0 | 6.0 | 6.0 |
| 3S040080N-20 | 20.0 | 6.0 | 6.0 |
| 3S040080N-25 | 25.0 | 6.0 | 6.0 |
| 3S040080N-30 | 30.0 | 6.0 | 6.0 |

| Part | L | P1 | P2 |
|---------------|------|-----|-----|
| 3S040080N-35 | 35.0 | 6.0 | 6.0 |
| 3S040080N-40 | 40.0 | 6.0 | 6.0 |
| 3S040080N-045 | 45.0 | 6.0 | 6.0 |
| 3S040080N-50 | 50.0 | 6.0 | 6.0 |

Hexagon (type: 3), Thread (D1 + D2): M5, Hexagon size (SW): 9.5

| Part | L | P1 | P2 |
|---------------|------|-----|-----|
| 3S050095N-020 | 20.0 | 6.0 | 6.0 |
| 3S050095N-025 | 25.0 | 6.0 | 6.0 |
| 3S050095N-030 | 30.0 | 6.0 | 6.0 |
| 3S050095N-035 | 35.0 | 6.0 | 6.0 |

| Part | L | P1 | P2 |
|---------------|------|-----|-----|
| 3S050095N-040 | 40.0 | 6.0 | 6.0 |
| 3S050095N-050 | 50.0 | 6.0 | 6.0 |
| 3S050095N-065 | 65.0 | 6.0 | 6.0 |
| 3S050095N-070 | 70.0 | 6.0 | 6.0 |