

**DISTINEX® - Distanzhalter mit Gewinde (innen/aussern)**  
Messing (CuZn39Pb3)

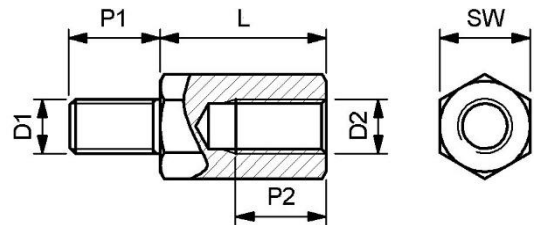
Distanzhalter mit Innen- und Aussengewinde aus Messing vernickelt.

<b>Material:</b>	Messing (CuZn39Pb3)
<b>Gewindegrössen:</b>	M2, M2.5, M3, M4, M5 (D1 + D2)
<b>Schlüsselweiten:</b>	4, 5, 5.5, 7, 8 (SW)
<b>Längentoleranzen:</b>	gem. ISO 2768-1M (mittel)
<b>RoHS konform:</b>	gem. 2011/65/EU Anhang III, Ausnahmeregelung 6c

Wir verfügen über ein grosses Lagersortiment dieser Artikel in verschiedenen Materialien, sowohl Kunststoff wie Metall. Weitere Informationen und Datenblätter dazu, sind auf unserer Webseite erhältlich.

Spezialausführungen in anderen Dimensionen und weiteren Materialien sind auf Anfrage über unser [Konfigurationsformular](#) erhältlich.

Weitere Längen bis 90mm, sind in 1mm-Schritten verfügbar.



**Gewinde (D1 + D2): M2, Schlüsselweite (SW): 4.0**

Artikel	L	P1	P2
DISTINEX2040M-05	5.0	6.0	3.0
DISTINEX2040M-06	6.0	6.0	3.0
DISTINEX2040M-07	7.0	6.0	3.0
DISTINEX2040M-08	8.0	6.0	6.0
DISTINEX2040M-10	10.0	6.0	6.0
DISTINEX2040M-12	12.0	6.0	6.0
DISTINEX2040M-14	14.0	6.0	6.0

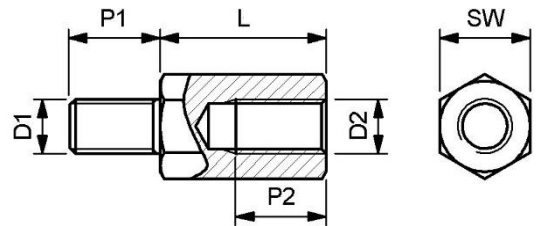
Artikel	L	P1	P2
DISTINEX2040M-15	15.0	6.0	6.0
DISTINEX2040M-17	17.0	6.0	6.0
DISTINEX2040M-18	18.0	6.0	6.0
DISTINEX2040M-20	20.0	6.0	6.0
DISTINEX2040M-25	25.0	6.0	6.0
DISTINEX2040M-30	30.0	6.0	6.0

**Gewinde (D1 + D2): M2.5, Schlüsselweite (SW): 5.0**

Artikel	L	P1	P2
DISTINEX2550M-03	3.0	6.0	2.0
DISTINEX2550M-04	4.0	6.0	3.0
DISTINEX2550M-05	5.0	6.0	3.0
DISTINEX2550M-06	6.0	6.0	3.0
DISTINEX2550M-07	7.0	6.0	3.0
DISTINEX2550M-08	8.0	6.0	6.0
DISTINEX2550M-09	9.0	6.0	6.0
DISTINEX2550M-10	10.0	6.0	6.0
DISTINEX2550M-11	11.0	6.0	6.0
DISTINEX2550M-12	12.0	6.0	6.0
DISTINEX2550M-13	13.0	6.0	6.0
DISTINEX2550M-14	14.0	6.0	6.0
DISTINEX2550M-15	15.0	6.0	6.0
DISTINEX2550M-16	16.0	6.0	6.0
DISTINEX2550M-17	17.0	6.0	6.0

Artikel	L	P1	P2
DISTINEX2550M-18	18.0	6.0	6.0
DISTINEX2550M-19	19.0	6.0	6.0
DISTINEX2550M-20	20.0	6.0	6.0
DISTINEX2550M-21	21.0	6.0	6.0
DISTINEX2550M-22	22.0	6.0	6.0
DISTINEX2550M-23	23.0	6.0	6.0
DISTINEX2550M-25	25.0	6.0	6.0
DISTINEX2550M-28	28.0	6.0	6.0
DISTINEX2550M-30	30.0	6.0	6.0
DISTINEX2550M-32	32.0	6.0	6.0
DISTINEX2550M-35	35.0	6.0	6.0
DISTINEX2550M-36	36.0	6.0	6.0
DISTINEX2550M-39	39.0	6.0	6.0
DISTINEX2550M-40	40.0	6.0	6.0

**DISTINEX® - Distanzhalter mit Gewinde (innen/ausen)**  
Messing (CuZn39Pb3)

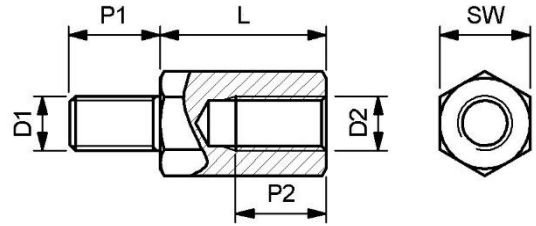


**Gewinde (D1 + D2): M3, Schlüsselweite (SW): 5.0**

Artikel	L	P1	P2
DISTINEX3050M-04	4.0	8.0	3.0
DISTINEX3050M-05	5.0	8.0	3.0
DISTINEX3050M-06	6.0	8.0	3.0
DISTINEX3050M-07	7.0	8.0	3.0
DISTINEX3050M-08	8.0	8.0	4.0
DISTINEX3050M-09	9.0	8.0	5.0
DISTINEX3050M-10	10.0	8.0	6.0
DISTINEX3050M-11	11.0	8.0	6.0
DISTINEX3050M-12	12.0	8.0	8.0
DISTINEX3050M-13	13.0	8.0	8.0
DISTINEX3050M-14	14.0	8.0	8.0
DISTINEX3050M-15	15.0	8.0	8.0
DISTINEX3050M-16	16.0	8.0	8.0
DISTINEX3050M-17	17.0	8.0	8.0
DISTINEX3050M-18	18.0	8.0	8.0
DISTINEX3050M-19	19.0	8.0	8.0
DISTINEX3050M-20	20.0	8.0	8.0
DISTINEX3050M-21	21.0	10.0	10.0
DISTINEX3050M-22	22.0	10.0	10.0
DISTINEX3050M-23	23.0	10.0	10.0
DISTINEX3050M-24	24.0	10.0	10.0
DISTINEX3050M-25	25.0	10.0	10.0
DISTINEX3050M-27	27.0	10.0	10.0

Artikel	L	P1	P2
DISTINEX3050M-28	28.0	10.0	10.0
DISTINEX3050M-30	30.0	10.0	10.0
DISTINEX3050M-32	32.0	10.0	10.0
DISTINEX3050M-33	33.0	10.0	10.0
DISTINEX3050M-34	34.0	10.0	10.0
DISTINEX3050M-35	35.0	10.0	10.0
DISTINEX3050M-36	36.0	10.0	10.0
DISTINEX3050M-37	37.0	10.0	10.0
DISTINEX3050M-40	40.0	10.0	10.0
DISTINEX3050M-44	44.0	10.0	10.0
DISTINEX3050M-45	45.0	10.0	10.0
DISTINEX3050M-48	48.0	10.0	10.0
DISTINEX3050M-50	50.0	10.0	10.0
DISTINEX3050M-52	52.0	10.0	10.0
DISTINEX3050M-53	53.0	10.0	10.0
DISTINEX3050M-55	55.0	10.0	10.0
DISTINEX3050M-57	57.0	10.0	10.0
DISTINEX3050M-60	60.0	10.0	10.0
DISTINEX3050M-62	62.0	10.0	10.0
DISTINEX3050M-67	67.0	10.0	10.0
DISTINEX3050M-70	70.0	10.0	10.0
DISTINEX3050M-80	80.0	10.0	10.0

**DISTINEX® - Distanzhalter mit Gewinde (innen/aussen)**  
Messing (CuZn39Pb3)



**Gewinde (D1 + D2): M3, Schlüsselweite (SW): 5.5**

Artikel	L	P1	P2
DISTINEX3055M-04	4.0	8.0	3.0
DISTINEX3055M-05	5.0	8.0	3.0
DISTINEX3055M-06	6.0	8.0	3.0
DISTINEX3055M-07	7.0	8.0	3.0
DISTINEX3055M-08	8.0	8.0	4.0
DISTINEX3055M-09	9.0	8.0	5.0
DISTINEX3055M-10	10.0	8.0	6.0
DISTINEX3055M-12	12.0	8.0	8.0
DISTINEX3055M-13	13.0	8.0	8.0
DISTINEX3055M-14	14.0	8.0	8.0
DISTINEX3055M-15	15.0	8.0	8.0
DISTINEX3055M-16	16.0	8.0	8.0
DISTINEX3055M-18	18.0	8.0	8.0
DISTINEX3055M-19	19.0	8.0	8.0
DISTINEX3055M-20	20.0	8.0	8.0

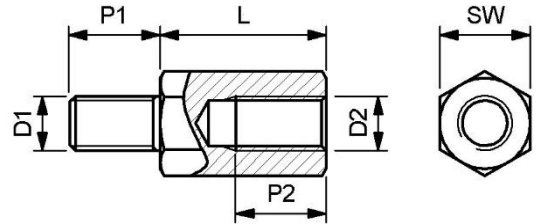
Artikel	L	P1	P2
DISTINEX3055M-22	22.0	10.0	10.0
DISTINEX3055M-23	23.0	10.0	10.0
DISTINEX3055M-25	25.0	10.0	10.0
DISTINEX3055M-27	27.0	10.0	10.0
DISTINEX3055M-30	30.0	10.0	10.0
DISTINEX3055M-35	35.0	10.0	10.0
DISTINEX3055M-38	38.0	10.0	10.0
DISTINEX3055M-40	40.0	10.0	10.0
DISTINEX3055M-47	47.0	10.0	10.0
DISTINEX3055M-50	50.0	10.0	10.0
DISTINEX3055M-53	53.0	10.0	10.0
DISTINEX3055M-55	55.0	10.0	10.0
DISTINEX3055M-60	60.0	10.0	10.0
DISTINEX3055M-67	67.0	10.0	10.0
DISTINEX3055M-70	70.0	10.0	10.0

**Gewinde (D1 + D2): M4, Schlüsselweite (SW): 7.0**

Artikel	L	P1	P2
DISTINEX4070M-05	5.0	8.0	3.0
DISTINEX4070M-06	6.0	8.0	3.0
DISTINEX4070M-07	7.0	8.0	3.0
DISTINEX4070M-08	8.0	8.0	4.0
DISTINEX4070M-09	9.0	8.0	5.0
DISTINEX4070M-10	10.0	8.0	6.0
DISTINEX4070M-11	11.0	8.0	6.0
DISTINEX4070M-12	12.0	8.0	8.0
DISTINEX4070M-13	13.0	8.0	8.0
DISTINEX4070M-14	14.0	8.0	8.0
DISTINEX4070M-15	15.0	8.0	8.0
DISTINEX4070M-16	16.0	8.0	8.0
DISTINEX4070M-17	17.0	8.0	8.0
DISTINEX4070M-18	18.0	8.0	8.0
DISTINEX4070M-19	19.0	8.0	8.0
DISTINEX4070M-20	20.0	8.0	8.0
DISTINEX4070M-22	22.0	10.0	10.0

Artikel	L	P1	P2
DISTINEX4070M-23	23.0	10.0	10.0
DISTINEX4070M-25	25.0	10.0	10.0
DISTINEX4070M-28	28.0	10.0	10.0
DISTINEX4070M-30	30.0	10.0	10.0
DISTINEX4070M-32	32.0	10.0	10.0
DISTINEX4070M-35	35.0	10.0	10.0
DISTINEX4070M-36	36.0	10.0	10.0
DISTINEX4070M-40	40.0	10.0	10.0
DISTINEX4070M-45	45.0	10.0	10.0
DISTINEX4070M-50	50.0	10.0	10.0
DISTINEX4070M-55	55.0	10.0	10.0
DISTINEX4070M-60	60.0	10.0	10.0
DISTINEX4070M-70	70.0	10.0	10.0
DISTINEX4070M-75	75.0	10.0	10.0
DISTINEX4070M-80	80.0	10.0	10.0
DISTINEX4070M-85	85.0	10.0	10.0
DISTINEX4070M-90	90.0	10.0	10.0

**DISTINEX® - Distanzhalter mit Gewinde (innen/aussen)**  
 Messing (CuZn39Pb3)



**Gewinde (D1 + D2): M5, Schlüsselweite (SW): 8.0**

Artikel	L	P1	P2
DISTINEX5080M-08	8.0	8.0	4.0
DISTINEX5080M-10	10.0	8.0	6.0
DISTINEX5080M-11	11.0	8.0	6.0
DISTINEX5080M-12	12.0	8.0	8.0
DISTINEX5080M-13	13.0	8.0	8.0
DISTINEX5080M-15	15.0	8.0	8.0
DISTINEX5080M-16	16.0	8.0	8.0
DISTINEX5080M-17	17.0	8.0	8.0
DISTINEX5080M-18	18.0	8.0	8.0
DISTINEX5080M-20	20.0	8.0	8.0
DISTINEX5080M-25	25.0	10.0	10.0
DISTINEX5080M-30	30.0	10.0	10.0
DISTINEX5080M-32	32.0	10.0	10.0

Artikel	L	P1	P2
DISTINEX5080M-33	33.0	10.0	10.0
DISTINEX5080M-35	35.0	10.0	10.0
DISTINEX5080M-40	40.0	10.0	10.0
DISTINEX5080M-45	45.0	10.0	10.0
DISTINEX5080M-50	50.0	10.0	10.0
DISTINEX5080M-55	56.0	10.0	10.0
DISTINEX5080M-60	60.0	10.0	10.0
DISTINEX5080M-65	65.0	10.0	10.0
DISTINEX5080M-70	70.0	10.0	10.0
DISTINEX5080M-75	75.0	10.0	10.0
DISTINEX5080M-80	80.0	10.0	10.0
DISTINEX5080M-90	90.0	10.0	10.0