

**DISTINEX® - Spacer with thread (inside/outside)**  
steel (5SMnPb36k)

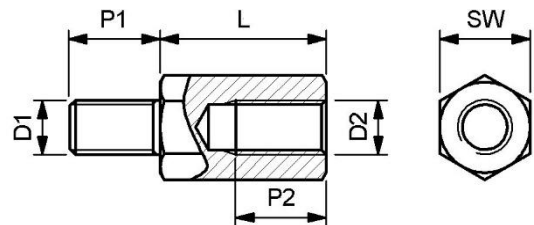
Spacer with internal and external thread made of nickel-plated steel.

<b>Material:</b>	steel (5SMnPb36k)
<b>Thread sizes:</b>	M2.5, M3, M4, M5, M6, M8 (D1 + D2)
<b>Hexagon sizes:</b>	5, 5.5, 7, 8, 9, 10, 13 (SW)
<b>Length tolerances:</b>	according to ISO 2768-1M (medium)
<b>RoHS compliant:</b>	according to 2011/65/EU appendix III, derogation 6a

We have a large stock range of these items in various materials, both plastic and metal. Further information and data sheets are available on our website.

Special versions in other dimensions and other materials are available on request via our [configuration form](#).

Further lengths up to 90mm, are available in 1mm increments.



**Thread (D1 + D2): M2.5, Hexagon size (SW): 5.0**

Part	L	P1	P2
DISTINEX2550S-08	8.0	6.0	6.0
DISTINEX2550S-10	10.0	6.0	6.0
DISTINEX2550S-11	11.0	6.0	6.0

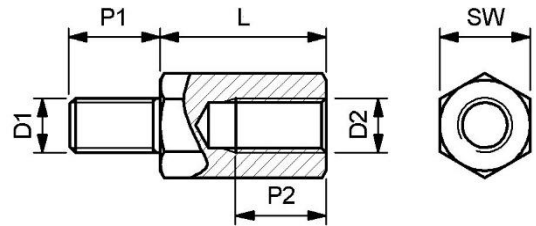
Part	L	P1	P2
DISTINEX2550S-18	18.0	6.0	6.0
DISTINEX2550S-19	19.0	6.0	6.0

**Thread (D1 + D2): M3, Hexagon size (SW): 5.0**

Part	L	P1	P2
DISTINEX3050S-05	5.0	8.0	3.0
DISTINEX3050S-06	6.0	8.0	3.0
DISTINEX3050S-07	7.0	8.0	3.0
DISTINEX3050S-08	8.0	8.0	4.0
DISTINEX3050S-09	9.0	8.0	5.0
DISTINEX3050S-10	10.0	8.0	6.0
DISTINEX3050S-11	11.0	8.0	6.0
DISTINEX3050S-12	12.0	8.0	8.0
DISTINEX3050S-13	13.0	8.0	8.0
DISTINEX3050S-14	14.0	8.0	8.0
DISTINEX3050S-15	15.0	8.0	8.0
DISTINEX3050S-16	16.0	8.0	8.0
DISTINEX3050S-17	17.0	8.0	8.0
DISTINEX3050S-18	18.0	8.0	8.0

Part	L	P1	P2
DISTINEX3050S-20	20.0	8.0	8.0
DISTINEX3050S-21	21.0	10.0	10.0
DISTINEX3050S-24	24.0	10.0	10.0
DISTINEX3050S-25	25.0	10.0	10.0
DISTINEX3050S-27	27.0	10.0	10.0
DISTINEX3050S-30	30.0	10.0	10.0
DISTINEX3050S-35	35.0	10.0	10.0
DISTINEX3050S-40	40.0	10.0	10.0
DISTINEX3050S-45	45.0	10.0	10.0
DISTINEX3050S-50	50.0	10.0	10.0
DISTINEX3050S-55	55.0	10.0	10.0
DISTINEX3050S-60	60.0	10.0	10.0
DISTINEX3050S-70	70.0	10.0	10.0

**DISTINEX® - Spacer with thread (inside/outside)**  
steel (5SMnPb36k)



**Thread (D1 + D2): M3, Hexagon size (SW): 5.5**

Part	L	P1	P2
DISTINEX3055S-05	5.0	8.0	3.0
DISTINEX3055S-06	6.0	8.0	3.0
DISTINEX3055S-07	7.0	8.0	3.0
DISTINEX3055S-08	8.0	8.0	4.0
DISTINEX3055S-10	10.0	8.0	6.0
DISTINEX3055S-12	12.0	8.0	8.0
DISTINEX3055S-15	15.0	8.0	8.0
DISTINEX3055S-16	16.0	8.0	8.0

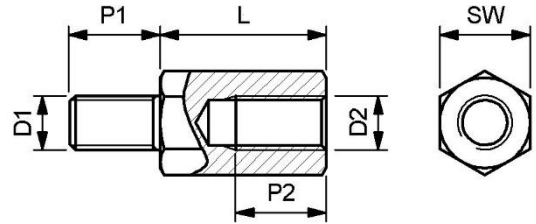
Part	L	P1	P2
DISTINEX3055S-18	18.0	8.0	8.0
DISTINEX3055S-20	20.0	8.0	8.0
DISTINEX3055S-25	25.0	10.0	10.0
DISTINEX3055S-27	27.0	10.0	10.0
DISTINEX3055S-30	30.0	10.0	10.0
DISTINEX3055S-35	35.0	10.0	10.0
DISTINEX3055S-40	40.0	10.0	10.0
DISTINEX3055S-65	65.0	10.0	10.0

**Thread (D1 + D2): M4, Hexagon size (SW): 7.0**

Part	L	P1	P2
DISTINEX4070S-05	5.0	8.0	3.0
DISTINEX4070S-08	8.0	8.0	4.0
DISTINEX4070S-09	9.0	8.0	5.0
DISTINEX4070S-10	10.0	8.0	6.0
DISTINEX4070S-12	12.0	8.0	8.0
DISTINEX4070S-14	14.0	8.0	8.0
DISTINEX4070S-15	15.0	8.0	8.0
DISTINEX4070S-16	16.0	8.0	8.0
DISTINEX4070S-18	18.0	8.0	8.0
DISTINEX4070S-19	19.0	8.0	8.0
DISTINEX4070S-20	20.0	8.0	8.0
DISTINEX4070S-22	22.0	10.0	10.0
DISTINEX4070S-23	23.0	10.0	10.0
DISTINEX4070S-25	25.0	10.0	10.0
DISTINEX4070S-27	27.0	10.0	10.0

Part	L	P1	P2
DISTINEX4070S-30	30.0	10.0	10.0
DISTINEX4070S-33	33.0	10.0	10.0
DISTINEX4070S-35	35.0	10.0	10.0
DISTINEX4070S-38	38.0	10.0	10.0
DISTINEX4070S-40	40.0	10.0	10.0
DISTINEX4070S-45	45.0	10.0	10.0
DISTINEX4070S-50	50.0	10.0	10.0
DISTINEX4070S-55	55.0	10.0	10.0
DISTINEX4070S-60	60.0	10.0	10.0
DISTINEX4070S-62	62.0	10.0	10.0
DISTINEX4070S-65	65.0	10.0	10.0
DISTINEX4070S-69	69.0	10.0	10.0
DISTINEX4070S-70	70.0	10.0	10.0
DISTINEX4070S-80	80.0	10.0	10.0
DISTINEX4070S-85	85.0	10.0	10.0

**DISTINEX® - Spacer with thread (inside/outside)**  
steel (5SMnPb36k)



**Thread (D1 + D2): M5, Hexagon size (SW): 8.0**

Part	L	P1	P2
DISTINEX5080S-05	5.0	8.0	3.0
DISTINEX5080S-08	8.0	8.0	4.0
DISTINEX5080S-10	10.0	8.0	6.0
DISTINEX5080S-12	12.0	8.0	8.0
DISTINEX5080S-15	15.0	8.0	8.0
DISTINEX5080S-16	16.0	8.0	8.0
DISTINEX5080S-18	18.0	8.0	8.0
DISTINEX5080S-20	20.0	8.0	8.0
DISTINEX5080S-22	22.0	10.0	10.0
DISTINEX5080S-25	25.0	10.0	10.0
DISTINEX5080S-30	30.0	10.0	10.0
DISTINEX5080S-35	35.0	10.0	10.0
DISTINEX5080S-40	40.0	10.0	10.0

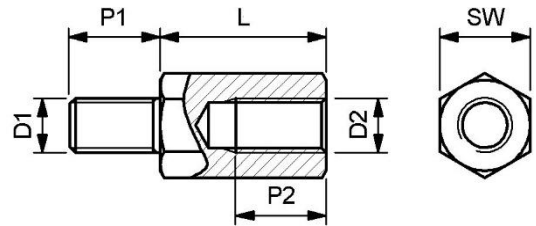
Part	L	P1	P2
DISTINEX5080S-45	45.0	10.0	10.0
DISTINEX5080S-50	50.0	10.0	10.0
DISTINEX5080S-52	52.0	10.0	10.0
DISTINEX5080S-55	55.0	10.0	10.0
DISTINEX5080S-60	60.0	10.0	10.0
DISTINEX5080S-65	65.0	10.0	10.0
DISTINEX5080S-66	66.0	10.0	10.0
DISTINEX5080S-70	70.0	10.0	10.0
DISTINEX5080S-75	75.0	10.0	10.0
DISTINEX5080S-78	78.0	10.0	10.0
DISTINEX5080S-80	80.0	10.0	10.0
DISTINEX5080S-90	90.0	10.0	10.0

**Thread (D1 + D2): M6, Hexagon size (SW): 9.0**

Part	L	P1	P2
DISTINEX6090S-10	10.0	10.0	6.0
DISTINEX6090S-14	14.0	10.0	6.0
DISTINEX6090S-15	15.0	10.0	12.0
DISTINEX6090S-18	18.0	10.0	12.0
DISTINEX6090S-20	20.0	10.0	12.0
DISTINEX6090S-25	25.0	10.0	12.0
DISTINEX6090S-30	30.0	10.0	12.0
DISTINEX6090S-35	35.0	10.0	12.0
DISTINEX6090S-38	38.0	10.0	12.0
DISTINEX6090S-40	40.0	10.0	12.0
DISTINEX6090S-45	45.0	10.0	12.0

Part	L	P1	P2
DISTINEX6090S-50	50.0	10.0	12.0
DISTINEX6090S-52	52.0	10.0	12.0
DISTINEX6090S-55	55.0	10.0	12.0
DISTINEX6090S-60	60.0	10.0	12.0
DISTINEX6090S-65	65.0	10.0	12.0
DISTINEX6090S-70	70.0	10.0	12.0
DISTINEX6090S-75	75.0	10.0	12.0
DISTINEX6090S-80	80.0	10.0	12.0
DISTINEX6090S-85	85.0	10.0	12.0
DISTINEX6090S-88	88.0	10.0	12.0
DISTINEX6090S-90	90.0	10.0	12.0

**DISTINEX® - Spacer with thread (inside/outside)**  
steel (5SMnPb36k)



**Thread (D1 + D2): M6, Hexagon size (SW): 10.0**

Part	L	P1	P2
DISTINEX60100S10	10.0	12.0	6.0
DISTINEX60100S12	12.0	12.0	8.0
DISTINEX60100S15	15.0	12.0	8.0
DISTINEX60100S-16	16.0	12.0	12.0
DISTINEX60100S18	18.0	12.0	12.0
DISTINEX60100S20	20.0	12.0	12.0
DISTINEX60100S25	25.0	12.0	12.0
DISTINEX60100S30	30.0	12.0	12.0
DISTINEX60100S35	35.0	12.0	12.0
DISTINEX60100S40	40.0	12.0	12.0

Part	L	P1	P2
DISTINEX60100S45	45.0	12.0	12.0
DISTINEX60100S50	50.0	12.0	12.0
DISTINEX60100S55	55.0	12.0	12.0
DISTINEX60100S60	60.0	12.0	12.0
DISTINEX60100S65	65.0	12.0	12.0
DISTINEX60100S70	70.0	12.0	12.0
DISTINEX60100S75	75.0	12.0	12.0
DISTINEX60100S80	80.0	12.0	12.0
DISTINEX60100S85	85.0	12.0	12.0
DISTINEX60100S90	90.0	12.0	12.0

**Thread (D1 + D2): M8, Hexagon size (SW): 13.0**

Part	L	P1	P2
DISTINEX80130S10	10.0	14.0	8.0
DISTINEX80130S-13	13.0	14.0	8.0
DISTINEX80130S-14	14.0	14.0	8.0
DISTINEX80130S15	15.0	14.0	8.0
DISTINEX80130S18	18.0	14.0	12.0
DISTINEX80130S20	20.0	14.0	12.0
DISTINEX80130S25	25.0	14.0	15.0
DISTINEX80130S30	30.0	14.0	15.0
DISTINEX80130S35	35.0	14.0	15.0

Part	L	P1	P2
DISTINEX80130S40	40.0	14.0	15.0
DISTINEX80130S50	50.0	14.0	15.0
DISTINEX80130S60	60.0	14.0	15.0
DISTINEX80130S-65	65.0	14.0	15.0
DISTINEX80130S68	68.0	14.0	15.0
DISTINEX80130S70	70.0	14.0	15.0
DISTINEX80130S80	80.0	14.0	15.0
DISTINEX80130S90	90.0	14.0	15.0