

DISTIN® - Distanzhalter mit Gewinde (innen/innen)
Messing (CuZn39Pb3)

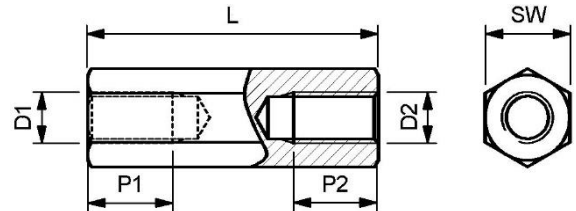
Distanzhalter mit Innengewinde aus Messing vernickelt.

Material:	Messing (CuZn39Pb3)
Gewindegrößen:	M2, M2.5, M3, M4, M5 (D1 + D2)
Schlüsselweiten:	4, 5, 7, 8 (SW)
Längentoleranzen:	gem. ISO 2768-1M (mittel)
RoHS konform:	gem. 2011/65/EU Anhang III, Ausnahmeregelung 6c

Wir verfügen über ein grosses Lagersortiment dieser Artikel in verschiedenen Materialien, sowohl Kunststoff wie Metall. Weitere Informationen und Datenblätter dazu, sind auf unserer Webseite erhältlich.

Spezialausführungen in anderen Dimensionen und weiteren Materialien sind auf Anfrage über unser [Konfigurationsformular](#) erhältlich.

Weitere Längen bis 90mm, sind in 1mm-Schritten verfügbar.

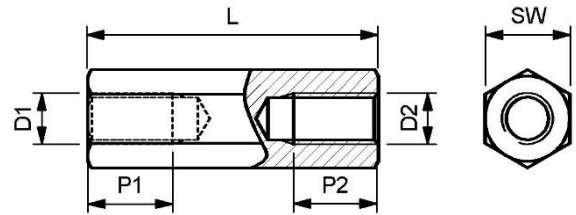


Gewinde (D1 + D2): M2, Schlüsselweite (SW): 4.0

Artikel	L	P1	P2
DISTIN2040M-04	4.0	4.0	4.0
DISTIN2040M-05	5.0	5.0	5.0
DISTIN2040M-06	6.0	6.0	6.0
DISTIN2040M-07	7.0	7.0	7.0
DISTIN2040M-08	9.0	9.0	9.0
DISTIN2040M-09	10.0	10.0	10.0
DISTIN2040M-10	11.0	11.0	11.0
DISTIN2040M-11	12.0	12.0	12.0
DISTIN2040M-12	13.0	13.0	13.0
DISTIN2040M-13	14.0	14.0	14.0
DISTIN2040M-14	14.0	14.0	14.0
DISTIN2040M-15	15.0	15.0	15.0

Artikel	L	P1	P2
DISTIN2040M-16	16.0	16.0	16.0
DISTIN2040M-18	18.0	8.0	8.0
DISTIN2040M-20	20.0	8.0	8.0
DISTIN2040M-21	21.0	8.0	8.0
DISTIN2040M-23	23.0	8.0	8.0
DISTIN2040M-25	25.0	8.0	8.0
DISTIN2040M-30	30.0	8.0	8.0
DISTIN2040M-38	38.0	8.0	8.0
DISTIN2040M-39	39.0	8.0	8.0
DISTIN2040M-40	40.0	10.0	10.0
DISTIN2040M-45	45.0	10.0	10.0

DISTIN® - Distanzhalter mit Gewinde (innen/innen)
 Messing (CuZn39Pb3)

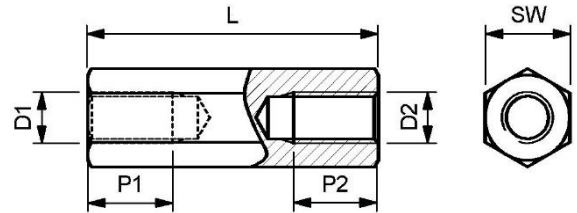


Gewinde (D1 + D2): M2.5, Schlüsselweite (SW): 5.0

Artikel	L	P1	P2
DISTIN2550M-03	3.0	3.0	3.0
DISTIN2550M-04	4.0	4.0	4.0
DISTIN2550M-05	5.0	5.0	5.0
DISTIN2550M-06	6.0	6.0	6.0
DISTIN2550M-07	7.0	7.0	7.0
DISTIN2550M-08	8.0	8.0	8.0
DISTIN2550M-09	9.0	9.0	9.0
DISTIN2550M-10	10.0	10.0	10.0
DISTIN2550M-11	11.0	11.0	11.0
DISTIN2550M-12	12.0	12.0	12.0
DISTIN2550M-13	13.0	13.0	13.0
DISTIN2550M-14	14.0	14.0	14.0
DISTIN2550M-15	15.0	15.0	15.0
DISTIN2550M-16	16.0	16.0	16.0
DISTIN2550M-17	17.0	17.0	17.0
DISTIN2550M-18	18.0	8.0	8.0
DISTIN2550M-19	19.0	8.0	8.0
DISTIN2550M-20	20.0	8.0	8.0
DISTIN2550M-21	21.0	8.0	8.0
DISTIN2550M-22	22.0	8.0	8.0
DISTIN2550M-23	23.0	8.0	8.0
DISTIN2550M-24	24.0	8.0	8.0

Artikel	L	P1	P2
DISTIN2550M-25	25.0	8.0	8.0
DISTIN2550M-26	26.0	8.0	8.0
DISTIN2550M-27	27.0	8.0	8.0
DISTIN2550M-28	28.0	8.0	8.0
DISTIN2550M-29	29.0	8.0	8.0
DISTIN2550M-30	30.0	8.0	8.0
DISTIN2550M-32	32.0	8.0	8.0
DISTIN2550M-33	33.0	8.0	8.0
DISTIN2550M-34	34.0	8.0	8.0
DISTIN2550M-35	35.0	8.0	8.0
DISTIN2550M-36	36.0	8.0	8.0
DISTIN2550M-37	37.0	8.0	8.0
DISTIN2550M-39	39.0	8.0	8.0
DISTIN2550M-40	40.0	10.0	10.0
DISTIN2550M-42	42.0	10.0	10.0
DISTIN2550M-45	45.0	10.0	10.0
DISTIN2550M-47	47.0	10.0	10.0
DISTIN2550M-48	48.0	10.0	10.0
DISTIN2550M-50	50.0	10.0	10.0
DISTIN2550M-54	54.0	10.0	10.0
DISTIN2550M-60	60.0	10.0	10.0
DISTIN2550M-66	66.0	10.0	10.0

DISTIN® - Distanzhalter mit Gewinde (innen/innen)
Messing (CuZn39Pb3)

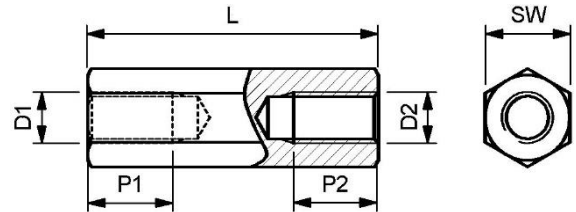


Gewinde (D1 + D2): M3, Schlüsselweite (SW): 5.0

Artikel	L	P1	P2
DISTIN3050M-03	3.0	3.0	3.0
DISTIN3050M-04	4.0	4.0	4.0
DISTIN3050M-05	5.0	5.0	5.0
DISTIN3050M-06	6.0	6.0	6.0
DISTIN3050M-07	7.0	7.0	7.0
DISTIN3050M-08	8.0	8.0	8.0
DISTIN3050M-09	9.0	9.0	9.0
DISTIN3050M-10	10.0	10.0	10.0
DISTIN3050M-11	11.0	11.0	11.0
DISTIN3050M-12	12.0	12.0	12.0
DISTIN3050M-13	13.0	13.0	13.0
DISTIN3050M-14	14.0	14.0	14.0
DISTIN3050M-15	15.0	15.0	15.0
DISTIN3050M-16	16.0	16.0	16.0
DISTIN3050M-17	17.0	17.0	17.0
DISTIN3050M-18	18.0	18.0	18.0
DISTIN3050M-19	19.0	19.0	19.0
DISTIN3050M-20	20.0	20.0	20.0
DISTIN3050M-21	21.0	10.0	10.0
DISTIN3050M-22	22.0	10.0	10.0
DISTIN3050M-23	23.0	10.0	10.0
DISTIN3050M-24	24.0	10.0	10.0
DISTIN3050M-25	25.0	10.0	10.0
DISTIN3050M-26	26.0	10.0	10.0
DISTIN3050M-27	27.0	10.0	10.0
DISTIN3050M-28	28.0	10.0	10.0
DISTIN3050M-29	29.0	10.0	10.0
DISTIN3050M-30	30.0	10.0	10.0

Artikel	L	P1	P2
DISTIN3050M-32	32.0	10.0	10.0
DISTIN3050M-33	33.0	10.0	10.0
DISTIN3050M-34	34.0	10.0	10.0
DISTIN3050M-35	35.0	10.0	10.0
DISTIN3050M-36	36.0	10.0	10.0
DISTIN3050M-37	37.0	10.0	10.0
DISTIN3050M-38	38.0	10.0	10.0
DISTIN3050M-39	39.0	10.0	10.0
DISTIN3050M-40	40.0	10.0	10.0
DISTIN3050M-41	41.0	10.0	10.0
DISTIN3050M-42	42.0	10.0	10.0
DISTIN3050M-45	45.0	10.0	10.0
DISTIN3050M-46	46.0	10.0	10.0
DISTIN3050M-50	50.0	10.0	10.0
DISTIN3050M-52	52.0	10.0	10.0
DISTIN3050M-55	55.0	10.0	10.0
DISTIN3050M-57	57.0	10.0	10.0
DISTIN3050M-58	58.0	10.0	10.0
DISTIN3050M-60	60.0	10.0	10.0
DISTIN3050M-65	65.0	10.0	10.0
DISTIN3050M-68	68.0	10.0	10.0
DISTIN3050M-69	69.0	10.0	10.0
DISTIN3050M-70	70.0	10.0	10.0
DISTIN3050M-72	72.0	10.0	10.0
DISTIN3050M-73	73.0	10.0	10.0
DISTIN3050M-78	78.0	10.0	10.0
DISTIN3050M-80	80.0	10.0	10.0
DISTIN3050M-89	89.0	10.0	10.0

DISTIN® - Distanzhalter mit Gewinde (innen/innen)
Messing (CuZn39Pb3)



Gewinde (D1 + D2): M4, Schlüsselweite (SW): 7.0

Artikel	L	P1	P2
DISTIN4070M-04	4.0	4.0	4.0
DISTIN4070M-05	5.0	5.0	5.0
DISTIN4070M-06	6.0	6.0	6.0
DISTIN4070M-07	7.0	7.0	7.0
DISTIN4070M-08	8.0	8.0	8.0
DISTIN4070M-10	10.0	10.0	10.0
DISTIN4070M-11	11.0	11.0	11.0
DISTIN4070M-12	12.0	12.0	12.0
DISTIN4070M-13	13.0	13.0	13.0
DISTIN4070M-14	14.0	14.0	14.0
DISTIN4070M-15	15.0	15.0	15.0
DISTIN4070M-16	16.0	16.0	16.0
DISTIN4070M-17	17.0	17.0	17.0
DISTIN4070M-18	18.0	18.0	18.0
DISTIN4070M-19	19.0	19.0	19.0
DISTIN4070M-20	20.0	20.0	20.0
DISTIN4070M-22	22.0	10.0	10.0
DISTIN4070M-23	23.0	10.0	10.0
DISTIN4070M-25	25.0	10.0	10.0
DISTIN4070M-27	27.0	10.0	10.0
DISTIN4070M-28	28.0	10.0	10.0
DISTIN4070M-30	30.0	10.0	10.0

Artikel	L	P1	P2
DISTIN4070M-32	32.0	10.0	10.0
DISTIN4070M-34	34.0	10.0	10.0
DISTIN4070M-35	35.0	10.0	10.0
DISTIN4070M-37	37.0	10.0	10.0
DISTIN4070M-40	40.0	10.0	10.0
DISTIN4070M-42	42.0	10.0	10.0
DISTIN4070M-45	45.0	10.0	10.0
DISTIN4070M-47	47.0	10.0	10.0
DISTIN4070M-50	50.0	10.0	10.0
DISTIN4070M-55	55.0	10.0	10.0
DISTIN4070M-57	57.0	10.0	10.0
DISTIN4070M-60	60.0	10.0	10.0
DISTIN4070M-65	65.0	10.0	10.0
DISTIN4070M-66	66.0	10.0	10.0
DISTIN4070M-67	67.0	10.0	10.0
DISTIN4070M-68	68.0	10.0	10.0
DISTIN4070M-70	70.0	10.0	10.0
DISTIN4070M-75	75.0	10.0	10.0
DISTIN4070M-80	80.0	10.0	10.0
DISTIN4070M-85	85.0	10.0	10.0
DISTIN4070M-90	90.0	10.0	10.0
DISTIN4070M-94	94.0	10.0	10.0

Gewinde (D1 + D2): M5, Schlüsselweite (SW): 8.0

Artikel	L	P1	P2
DISTIN5080M-05	5.0	5.0	5.0
DISTIN5080M-08	8.0	8.0	8.0
DISTIN5080M-10	10.0	10.0	10.0
DISTIN5080M-12	12.0	12.0	12.0
DISTIN5080M-13	13.0	13.0	13.0
DISTIN5080M-15	15.0	15.0	15.0
DISTIN5080M-16	16.0	16.0	16.0
DISTIN5080M-18	18.0	18.0	18.0
DISTIN5080M-20	20.0	20.0	20.0
DISTIN5080M-24	24.0	8.0	8.0
DISTIN5080M-25	25.0	8.0	8.0
DISTIN5080M-30	30.0	8.0	8.0

Artikel	L	P1	P2
DISTIN5080M-34	34.0	8.0	8.0
DISTIN5080M-35	35.0	8.0	8.0
DISTIN5080M-40	40.0	8.0	8.0
DISTIN5080M-45	45.0	8.0	8.0
DISTIN5080M-50	50.0	8.0	8.0
DISTIN5080M-55	55.0	8.0	8.0
DISTIN5080M-60	60.0	8.0	8.0
DISTIN5080M-63	63.0	8.0	8.0
DISTIN5080M-70	70.0	8.0	8.0
DISTIN5080M-75	75.0	8.0	8.0
DISTIN5080M-80	80.0	8.0	8.0
DISTIN5080M-90	90.0	8.0	8.0