

DISTIN® - Spacer with thread (inside/inside)
nylon with brass (CuZn39Pb3) thread

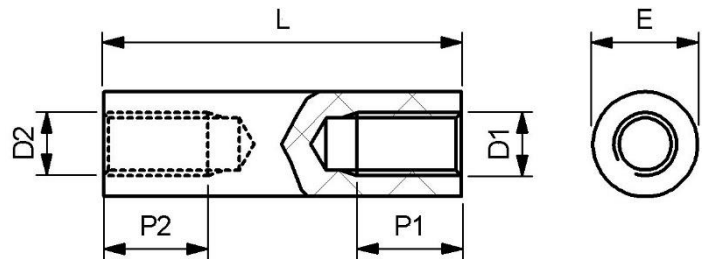
Spacer with internal thread made of brass.

Material sleeve:	nylon
Material thread:	brass (CuZn39Pb3)
Thread sizes:	M2.5, M3, M4, M5, M6, M8, M10 (D1 + D2)
Outer diameter:	8, 9.5, 12.7, 15.9, 19, 25mm (E)
Hexagon sizes:	6, 6.4, 7, 8 (SW)
Versions:	type 1 round type 2 round and hexagon type 3 hexagon
Längentoleranzen:	according to ISO 2768-1M (medium)
RoHS konform:	according to 2011/65/EU appendix III, derogation 6c

We have a large stock range of these items in various materials, both plastic and metal. Further information and data sheets are available on our website.

Special versions in other dimensions and other materials are available on request via our [configuration form](#).

Further lengths up to 90mm, are available in 1mm increments.

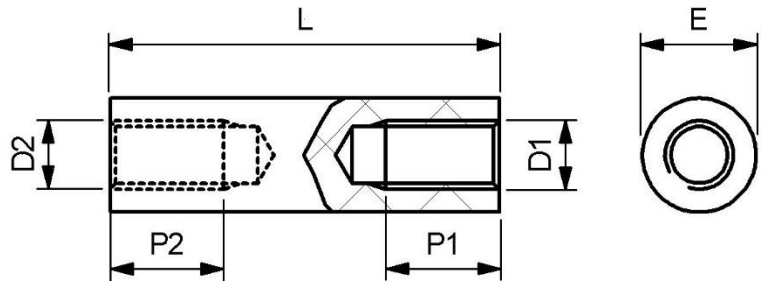


Round (type: 1), Thread (D1 + D2): M3, Outer diameter (E): 8.0

Artikel	L	P1	P2
2R030080N-012	12.0	6.0	6.0
2R030080N-013	13.0	6.0	6.0
2R030080N-014	14.0	6.0	6.0
2R030080N-015	15.0	6.0	6.0
2R030080N-016	16.0	6.0	6.0
2R030080N-017	17.0	6.0	6.0
2R030080N-018	18.0	6.0	6.0
2R030080N-019	19.0	6.0	6.0
2R030080N-020	20.0	6.0	6.0
2R030080N-021	21.0	6.0	6.0
2R030080N-022	22.0	6.0	6.0
2R030080N-023	23.0	6.0	6.0
2R030080N-024	24.0	6.0	6.0
2R030080N-025	25.0	6.0	6.0
2R030080N-026	26.0	6.0	6.0
2R030080N-027	27.0	6.0	6.0
2R030080N-028	28.0	6.0	6.0
2R030080N-029	29.0	6.0	6.0
2R030080N-030	30.0	6.0	6.0
2R030080N-031	31.0	6.0	6.0
2R030080N-032	32.0	6.0	6.0
2R030080N-033	33.0	6.0	6.0
2R030080N-034	34.0	6.0	6.0

Artikel	L	P1	P2
2R030080N-035	35.0	6.0	6.0
2R030080N-036	36.0	6.0	6.0
2R030080N-037	37.0	6.0	6.0
2R030080N-038	38.0	6.0	6.0
2R030080N-039	39.0	6.0	6.0
2R030080N-040	40.0	6.0	6.0
2R030080N-041	41.0	6.0	6.0
2R030080N-042	42.0	6.0	6.0
2R030080N-043	43.0	6.0	6.0
2R030080N-044	44.0	6.0	6.0
2R030080N-045	45.0	6.0	6.0
2R030080N-046	46.0	6.0	6.0
2R030080N-047	47.0	6.0	6.0
2R030080N-048	48.0	6.0	6.0
2R030080N-049	49.0	6.0	6.0
2R030080N-050	50.0	6.0	6.0
2R030080N-055	55.0	6.0	6.0
2R030080N-057	57.0	6.0	6.0
2R030080N-060	60.0	6.0	6.0
2R030080N-065	65.0	6.0	6.0
2R030080N-070	70.0	6.0	6.0
2R030080N-080	80.0	6.0	6.0
2R030080N-090	90.0	6.0	6.0

DISTIN® - Spacer with thread (inside/inside)
nylon with brass (CuZn39Pb3) thread



Round (type: 1), Thread (D1 + D2): M4, Outer diameter (E): 8.0

Artikel	L	P1	P2
2R040080N-013	13.0	6.0	6.0
2R040080N-014	14.0	6.0	6.0
2R040080N-015	15.0	6.0	6.0
2R040080N-016	16.0	6.0	6.0
2R040080N-017	17.0	6.0	6.0
2R040080N-018	18.0	6.0	6.0
2R040080N-019	19.0	6.0	6.0
2R040080N-020	20.0	6.0	6.0
2R040080N-021	21.0	6.0	6.0
2R040080N-022	22.0	6.0	6.0
2R040080N-023	23.0	6.0	6.0
2R040080N-024	24.0	6.0	6.0
2R040080N-025	25.0	6.0	6.0
2R040080N-026	26.0	6.0	6.0
2R040080N-027	27.0	6.0	6.0
2R040080N-028	28.0	6.0	6.0
2R040080N-029	29.0	6.0	6.0
2R040080N-030	30.0	6.0	6.0
2R040080N-031	31.0	6.0	6.0
2R040080N-032	32.0	6.0	6.0
2R040080N-033	33.0	6.0	6.0
2R040080N-034	34.0	6.0	6.0
2R040080N-035	35.0	6.0	6.0
2R040080N-036	36.0	6.0	6.0

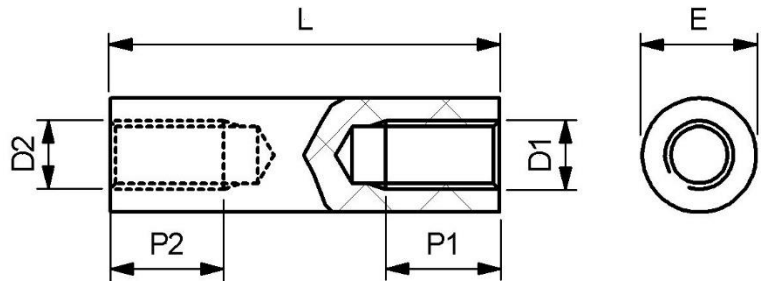
Artikel	L	P1	P2
2R040080N-037	37.0	6.0	6.0
2R040080N-038	38.0	6.0	6.0
2R040080N-039	39.0	6.0	6.0
2R040080N-040	40.0	6.0	6.0
2R040080N-041	41.0	6.0	6.0
2R040080N-042	42.0	6.0	6.0
2R040080N-043	43.0	6.0	6.0
2R040080N-044	44.0	6.0	6.0
2R040080N-045	45.0	6.0	6.0
2R040080N-046	46.0	6.0	6.0
2R040080N-047	47.0	6.0	6.0
2R040080N-048	48.0	6.0	6.0
2R040080N-049	49.0	6.0	6.0
2R040080N-050	50.0	6.0	6.0
2R040080N-054	54.0	6.0	6.0
2R040080N-055	55.0	6.0	6.0
2R040080N-057	57.0	6.0	6.0
2R040080N-060	60.0	6.0	6.0
2R040080N-063	63.0	6.0	6.0
2R040080N-065	65.0	6.0	6.0
2R040080N-070	70.0	6.0	6.0
2R040080N-075	75.0	6.0	6.0
2R040080N-076	76.0	6.0	6.0
2R040080N-085	85.0	6.0	6.0

Round (type: 1), Thread (D1 + D2): M5, Outer diameter (E): 9.5

Artikel	L	P1	P2
2R050095N-019	19.0	9.0	9.0
2R050095N-020	20.0	9.0	9.0
2R050095N-022	22.0	9.0	9.0
2R050095N-025	25.0	9.0	9.0
2R050095N-030	30.0	9.0	9.0
2R050095N-032	32.0	9.0	9.0
2R050095N-035	35.0	9.0	9.0
2R050095N-038	38.0	9.0	9.0
2R050095N-040	40.0	9.0	9.0

Artikel	L	P1	P2
2R050095N-045	45.0	9.0	9.0
2R050095N-050	50.0	9.0	9.0
2R050095N-055	55.0	9.0	9.0
2R050095N-057	57.0	9.0	9.0
2R050095N-060	60.0	9.0	9.0
2R050095N-063	63.0	9.0	9.0
2R050095N-065	65.0	9.0	9.0
2R050095N-070	70.0	9.0	9.0
2R050095N-076	76.0	9.0	9.0

DISTIN® - Spacer with thread (inside/inside)
nylon with brass (CuZn39Pb3) thread



Round (type: 1), Thread (D1 + D2): M6, Outer diameter (E): 12.7

Artikel	L	P1	P2
2R060127N-025	25.0	12.0	12.0
2R060127N-030	30.0	12.0	12.0
2R060127N-032	32.0	12.0	12.0
2R060127N-035	35.0	12.0	12.0

Artikel	L	P1	P2
2R060127N-038	38.0	12.0	12.0
2R060127N-040	40.0	12.0	12.0
2R060127N-045	45.0	12.0	12.0
2R060127N-050	50.0	12.0	12.0

Round (type: 1), Thread (D1 + D2): M8, Outer diameter (E): 15.9

Artikel	L	P1	P2
2R080159N-030	30.0	14.0	14.0
2R080159N-035	35.0	14.0	14.0
2R080159N-040	40.0	14.0	14.0
2R080159N-045	45.0	14.0	14.0
2R080159N-050	50.0	14.0	14.0
2R080159N-055	55.0	14.0	14.0
2R080159N-060	60.0	14.0	14.0

Artikel	L	P1	P2
2R080159N-065	65.0	14.0	14.0
2R080159N-070	70.0	14.0	14.0
2R080159N-075	75.0	14.0	14.0
2R080159N-080	80.0	14.0	14.0
2R080159N-085	85.0	14.0	14.0
2R080159N-090	90.0	14.0	14.0

Round (type: 1), Thread (D1 + D2): M8, Outer diameter (E): 19.0

Artikel	L	P1	P2
2R080190N-030	30.0	14.0	14.0
2R080190N-035	35.0	14.0	14.0
2R080190N-040	40.0	14.0	14.0
2R080190N-045	45.0	14.0	14.0
2R080190N-050	50.0	14.0	14.0
2R080190N-055	55.0	14.0	14.0
2R080190N-060	60.0	14.0	14.0

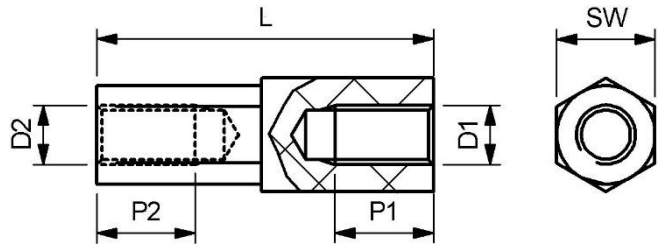
Artikel	L	P1	P2
2R080190N-065	65.0	14.0	14.0
2R080190N-070	70.0	14.0	14.0
2R080190N-075	75.0	14.0	14.0
2R080190N-080	80.0	14.0	14.0
2R080190N-085	85.0	14.0	14.0
2R080190N-090	90.0	14.0	14.0

Round (type: 1), Thread (D1 + D2): M10, Outer diameter (E): 25.0

Artikel	L	P1	P2
2R100250N-040	40.0	19.0	19.0
2R100250N-045	45.0	19.0	19.0
2R100250N-050	50.0	19.0	19.0
2R100250N-055	55.0	19.0	19.0
2R100250N-060	60.0	19.0	19.0
2R100250N-065	65.0	19.0	19.0

Artikel	L	P1	P2
2R100250N-070	70.0	19.0	19.0
2R100250N-075	75.0	19.0	19.0
2R100250N-080	80.0	19.0	19.0
2R100250N-085	85.0	19.0	19.0
2R100250N-090	90.0	19.0	19.0

DISTIN® - Spacer with thread (inside/inside)
nylon with brass (CuZn39Pb3) thread



Round + hexagon (type: 2), Thread (D1 + D2): M2.5, Hexagon size (SW): 6.0

Artikel	L	P1	P2
2S025060N-05	5.0	4.0	4.0
2S025060N-06	6.0	4.0	4.0
2S025060N-07	7.0	4.0	4.0
2S025060N-08	8.0	4.0	4.0
2S025060N-09	9.0	4.0	4.0
2S025060N-10	10.0	4.0	4.0
2S025060N-11	11.0	4.0	4.0
2S025060N-12	12.0	4.0	4.0

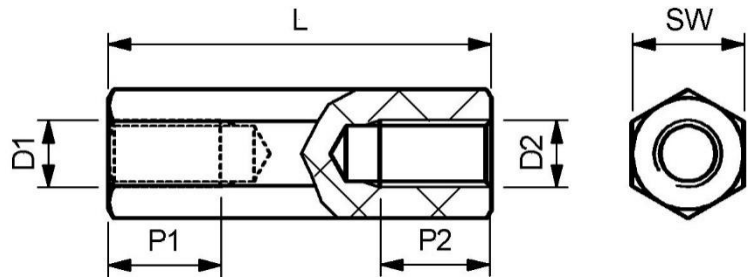
Artikel	L	P1	P2
2S025060N-15	15.0	4.0	4.0
2S025060N-20	20.0	4.0	4.0
2S025060N-25	25.0	4.0	4.0
2S025060N-30	30.0	4.0	4.0
2S025060N-35	35.0	4.0	4.0
2S025060N-40	25.0	4.0	4.0
2S025060N-45	45.0	4.0	4.0

Round + hexagon (type: 2), Thread (D1 + D2): M3, Hexagon size (SW): 7.0

Artikel	L	P1	P2
2S030070N-05	5.0	4.0	4.0
2S030070N-06	6.0	4.0	4.0
2S030070N-07	7.0	4.0	4.0
2S030070N-08	8.0	4.0	4.0
2S030070N-09	9.0	4.0	4.0
2S030070N-10	10.0	4.0	4.0
2S030070N-11	11.0	4.0	4.0
2S030070N-12	12.0	4.0	4.0

Artikel	L	P1	P2
2S030070N-15	15.0	4.0	4.0
2S030070N-20	20.0	4.0	4.0
2S030070N-25	25.0	4.0	4.0
2S030070N-30	30.0	4.0	4.0
2S030070N-35	35.0	4.0	4.0
2S030070N-40	25.0	4.0	4.0
2S030070N-45	45.0	4.0	4.0

DISTIN® - Spacer with thread (inside/inside)
nylon with brass (CuZn39Pb3) thread



Hexagon (type: 3), Thread (D1 + D2): M3, Hexagon size (SW): 6.4

Artikel	L	P1	P2
2S030635N-05	5.0	6.0	6.0
2S030635N-06	6.0	6.0	6.0
2S030635N-07	7.0	6.0	6.0
2S030635N-08	8.0	6.0	6.0
2S030635N-09	9.0	6.0	6.0
2S030635N-10	10.0	6.0	6.0
2S030635N-15	15.0	6.0	6.0

Artikel	L	P1	P2
2S030635N-20	20.0	6.0	6.0
2S030635N-25	25.0	6.0	6.0
2S030635N-30	30.0	6.0	6.0
2S030635N-35	35.0	6.0	6.0
2S030635N-40	25.0	6.0	6.0
2S030635N-45	45.0	6.0	6.0

Hexagon (type: 3), Thread (D1 + D2): M4, Hexagon size (SW): 8.0

Artikel	L	P1	P2
2S040080N-05	5.0	6.0	6.0
2S040080N-06	6.0	6.0	6.0
2S040080N-07	7.0	6.0	6.0
2S040080N-08	8.0	6.0	6.0
2S040080N-09	9.0	6.0	6.0
2S040080N-10	10.0	6.0	6.0
2S040080N-15	15.0	6.0	6.0

Artikel	L	P1	P2
2S040080N-20	20.0	6.0	6.0
2S040080N-25	25.0	6.0	6.0
2S040080N-30	30.0	6.0	6.0
2S040080N-35	35.0	6.0	6.0
2S040080N-25	25.0	6.0	6.0
2S040080N-45	45.0	6.0	6.0