

DIST® - Distanzhülse
Messing (CuZn39Pb3)

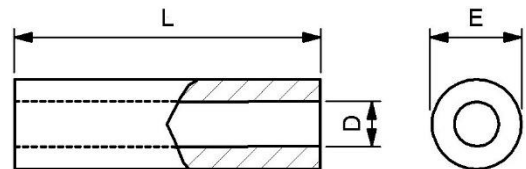
Distanzhülsen aus Messing vernickelt.

Material:	Messing (CuZn39Pb3)
Innendurchmesser:	2.2, 2.5, 3.2, 4.3, 5.3mm (D)
Aussendurchmesser:	4, 5, 6, 8, 10mm (E)
Längentoleranzen:	gem. ISO 2768-1M (mittel)
RoHS konform:	gem. 2011/65/EU Anhang III, Ausnahmeregelung 6c

Wir verfügen über ein grosses Lagersortiment dieser Artikel in verschiedenen Materialien, sowohl Kunststoff wie Metall. Weitere Informationen und Datenblätter dazu, sind auf unserer Webseite erhältlich.

Spezialausführungen in anderen Dimensionen und weiteren Materialien sind auf Anfrage über unser [Konfigurationsformular](#) erhältlich.

Weitere Längen bis 90mm, sind in 1mm-Schritten verfügbar.



Innendurchmesser (D): 2.2mm, Aussendurchmesser (E): 4.0mm

Artikel	L	D	E
DIST2240M-01	1.0	2.2	4.0
DIST2240M-02	2.0	2.2	4.0
DIST2240M-03	3.0	2.2	4.0
DIST2240M-04	4.0	2.2	4.0
DIST2240M-05	5.0	2.2	4.0
DIST2240M-06	6.0	2.2	4.0
DIST2240M-07	7.0	2.2	4.0
DIST2240M-08	8.0	2.2	4.0

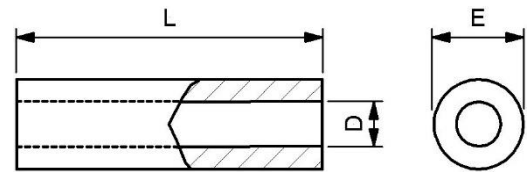
Artikel	L	D	E
DIST2240M-09	9.0	2.2	4.0
DIST2240M-10	10.0	2.2	4.0
DIST2240M-11	11.0	2.2	4.0
DIST2240M-12	12.0	2.2	4.0
DIST2240M-15	15.0	2.2	4.0
DIST2240M-18	18.0	2.2	4.0
DIST2240M-20	20.0	2.2	4.0

Innendurchmesser (D): 2.5mm, Aussendurchmesser (E): 5.0mm

Artikel	L	D	E
DIST2550M-01	1.0	2.5	5.0
DIST2550M-02	2.0	2.5	5.0
DIST2550M-03	3.0	2.5	5.0
DIST2550M-04	4.0	2.5	5.0
DIST2550M-05	5.0	2.5	5.0
DIST2550M-06	6.0	2.5	5.0
DIST2550M-07	7.0	2.5	5.0
DIST2550M-08	8.0	2.5	5.0
DIST2550M-09	9.0	2.5	5.0

Artikel	L	D	E
DIST2550M-10	10.0	2.5	5.0
DIST2550M-11	11.0	2.5	5.0
DIST2550M-12	12.0	2.5	5.0
DIST2550M-13	13.0	2.5	5.0
DIST2550M-14	14.0	2.5	5.0
DIST2550M-15	15.0	2.5	5.0
DIST2550M-18	18.0	2.5	5.0
DIST2550M-20	20.0	2.5	5.0
DIST2550M-30	30.0	2.5	5.0

DIST® - Distanzhülse
Messing (CuZn39Pb3)



Innendurchmesser (D): 3.2mm, Aussendurchmesser (E): 6.0mm

Artikel	L	D	E
DIST3260M-01	1.0	3.2	6.0
DIST3260M-02	2.0	3.2	6.0
DIST3260M-03	3.0	3.2	6.0
DIST3260M-04	4.0	3.2	6.0
DIST3260M-05	5.0	3.2	6.0
DIST3260M-06	6.0	3.2	6.0
DIST3260M-07	7.0	3.2	6.0
DIST3260M-08	8.0	3.2	6.0
DIST3260M-09	9.0	3.2	6.0
DIST3260M-10	10.0	3.2	6.0
DIST3260M-11	11.0	3.2	6.0
DIST3260M-12	12.0	3.2	6.0
DIST3260M-13	13.0	3.2	6.0
DIST3260M-14	14.0	3.2	6.0

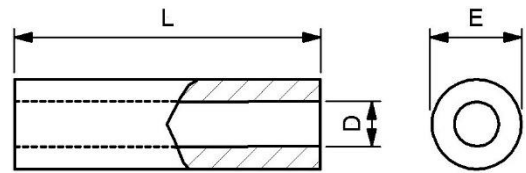
Artikel	L	D	E
DIST3260M-15	15.0	3.2	6.0
DIST3260M-16	16.0	3.2	6.0
DIST3260M-18	18.0	3.2	6.0
DIST3260M-20	20.0	3.2	6.0
DIST3260M-22	22.0	3.2	6.0
DIST3260M-23	23.0	3.2	6.0
DIST3260M-25	25.0	3.2	6.0
DIST3260M-29	29.0	3.2	6.0
DIST3260M-30	30.0	3.2	6.0
DIST3260M-35	35.0	3.2	6.0
DIST3260M-40	40.0	3.2	6.0
DIST3260M-50	50.0	3.2	6.0
DIST3260M-55	55.0	3.2	6.0
DIST3260M-60	60.0	3.2	6.0

Innendurchmesser (D): 4.3mm, Aussendurchmesser (E): 8.0mm

Artikel	L	D	E
DIST4380M-01	1.0	4.3	8.0
DIST4380M-02	2.0	4.3	8.0
DIST4380M-03	3.0	4.3	8.0
DIST4380M-04	4.0	4.3	8.0
DIST4380M-05	5.0	4.3	8.0
DIST4380M-06	6.0	4.3	8.0
DIST4380M-07	7.0	4.3	8.0
DIST4380M-08	8.0	4.3	8.0
DIST4380M-09	9.0	4.3	8.0
DIST4380M-10	10.0	4.3	8.0
DIST4380M-11	11.0	4.3	8.0
DIST4380M-12	12.0	4.3	8.0
DIST4380M-13	13.0	4.3	8.0
DIST4380M-14	14.0	4.3	8.0
DIST4380M-15	15.0	4.3	8.0
DIST4380M-16	16.0	4.3	8.0

Artikel	L	D	E
DIST4380M-17	17.0	4.3	8.0
DIST4380M-18	18.0	4.3	8.0
DIST4380M-20	20.0	4.3	8.0
DIST4380M-25	25.0	4.3	8.0
DIST4380M-26	26.0	4.3	8.0
DIST4380M-28	28.0	4.3	8.0
DIST4380M-30	30.0	4.3	8.0
DIST4380M-32	32.0	4.3	8.0
DIST4380M-33	33.0	4.3	8.0
DIST4380M-35	35.0	4.3	8.0
DIST4380M-40	40.0	4.3	8.0
DIST4380M-41	41.0	4.3	8.0
DIST4380M-45	45.0	4.3	8.0
DIST4380M-50	50.0	4.3	8.0
DIST4380M-60	60.0	4.3	8.0

DIST® - Distanzhülse
Messing (CuZn39Pb3)



Innendurchmesser (D): 5.3mm, Aussendurchmesser (E): 10.0mm

Artikel	L	D	E
DIST53100M-02	2.0	5.3	10.0
DIST53100M-03	3.0	5.3	10.0
DIST53100M-04	4.0	5.3	10.0
DIST53100M-05	5.0	5.3	10.0
DIST53100M-06	6.0	5.3	10.0
DIST53100M-07	7.0	5.3	10.0
DIST53100M-08	8.0	5.3	10.0
DIST53100M-10	10.0	5.3	10.0
DIST53100M-11	11.0	5.3	10.0
DIST53100M-12	12.0	5.3	10.0
DIST53100M-13	13.0	5.3	10.0
DIST53100M-14	14.0	5.3	10.0
DIST53100M-15	15.0	5.3	10.0
DIST53100M-18	18.0	5.3	10.0

Artikel	L	D	E
DIST53100M-20	20.0	5.3	10.0
DIST53100M-22	22.0	5.3	10.0
DIST53100M-25	25.0	5.3	10.0
DIST53100M-28	28.0	5.3	10.0
DIST53100M-30	30.0	5.3	10.0
DIST53100M-32	32.0	5.3	10.0
DIST53100M-35	35.0	5.3	10.0
DIST53100M-37	37.0	5.3	10.0
DIST53100M-40	40.0	5.3	10.0
DIST53100M-45	45.0	5.3	10.0
DIST53100M-47	47.0	5.3	10.0
DIST53100M-50	50.0	5.3	10.0
DIST53100M-52	52.0	5.3	10.0
DIST53100M-58	58.0	5.3	10.0