

DIST® - Spacer sleeve
brass (CuZn39Pb3)

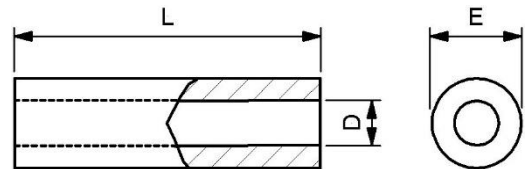
Spacer sleeve made of brass, nickel-plated.

Material:	brass (CuZn39Pb3)
Inner diameter:	2.2, 2.5, 3.2, 4.3, 5.3mm (D)
Outer diameter:	4, 5, 6, 8, 10mm (E)
Length tolerances:	according to ISO 2768-1M (medium)
RoHS compliant:	according to 2011/65/EU appendix III, derogation 6c

We have a large stock range of these items in various materials, both plastic and metal. Further information and data sheets are available on our website.

Special versions in other dimensions and other materials are available on request via our [configuration form](#).

Further lengths up to 90mm, are available in 1mm increments.



Inner diameter (D): 2.2mm, Outer diameter (E): 4.0mm

Part	L	D	E
DIST2240M-01	1.0	2.2	4.0
DIST2240M-02	2.0	2.2	4.0
DIST2240M-03	3.0	2.2	4.0
DIST2240M-04	4.0	2.2	4.0
DIST2240M-05	5.0	2.2	4.0
DIST2240M-06	6.0	2.2	4.0
DIST2240M-07	7.0	2.2	4.0
DIST2240M-08	8.0	2.2	4.0

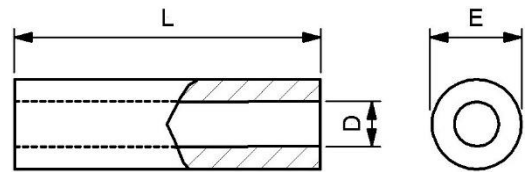
Part	L	D	E
DIST2240M-09	9.0	2.2	4.0
DIST2240M-10	10.0	2.2	4.0
DIST2240M-11	11.0	2.2	4.0
DIST2240M-12	12.0	2.2	4.0
DIST2240M-15	15.0	2.2	4.0
DIST2240M-18	18.0	2.2	4.0
DIST2240M-20	20.0	2.2	4.0

Inner diameter (D): 2.5mm, Outer diameter (E): 5.0mm

Part	L	D	E
DIST2550M-01	1.0	2.5	5.0
DIST2550M-02	2.0	2.5	5.0
DIST2550M-03	3.0	2.5	5.0
DIST2550M-04	4.0	2.5	5.0
DIST2550M-05	5.0	2.5	5.0
DIST2550M-06	6.0	2.5	5.0
DIST2550M-07	7.0	2.5	5.0
DIST2550M-08	8.0	2.5	5.0
DIST2550M-09	9.0	2.5	5.0

Part	L	D	E
DIST2550M-10	10.0	2.5	5.0
DIST2550M-11	11.0	2.5	5.0
DIST2550M-12	12.0	2.5	5.0
DIST2550M-13	13.0	2.5	5.0
DIST2550M-14	14.0	2.5	5.0
DIST2550M-15	15.0	2.5	5.0
DIST2550M-18	18.0	2.5	5.0
DIST2550M-20	20.0	2.5	5.0
DIST2550M-30	30.0	2.5	5.0

DIST® - Spacer sleeve
brass (CuZn39Pb3)



Inner diameter (D): 3.2mm, Outer diameter (E): 6.0mm

Part	L	D	E
DIST3260M-01	1.0	3.2	6.0
DIST3260M-02	2.0	3.2	6.0
DIST3260M-03	3.0	3.2	6.0
DIST3260M-04	4.0	3.2	6.0
DIST3260M-05	5.0	3.2	6.0
DIST3260M-06	6.0	3.2	6.0
DIST3260M-07	7.0	3.2	6.0
DIST3260M-08	8.0	3.2	6.0
DIST3260M-09	9.0	3.2	6.0
DIST3260M-10	10.0	3.2	6.0
DIST3260M-11	11.0	3.2	6.0
DIST3260M-12	12.0	3.2	6.0
DIST3260M-13	13.0	3.2	6.0
DIST3260M-14	14.0	3.2	6.0

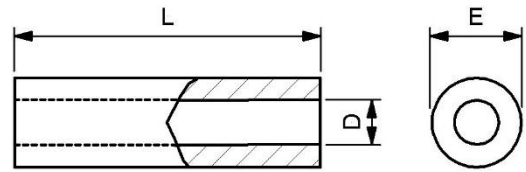
Part	L	D	E
DIST3260M-15	15.0	3.2	6.0
DIST3260M-16	16.0	3.2	6.0
DIST3260M-18	18.0	3.2	6.0
DIST3260M-20	20.0	3.2	6.0
DIST3260M-22	22.0	3.2	6.0
DIST3260M-23	23.0	3.2	6.0
DIST3260M-25	25.0	3.2	6.0
DIST3260M-29	29.0	3.2	6.0
DIST3260M-30	30.0	3.2	6.0
DIST3260M-35	35.0	3.2	6.0
DIST3260M-40	40.0	3.2	6.0
DIST3260M-50	50.0	3.2	6.0
DIST3260M-55	55.0	3.2	6.0
DIST3260M-60	60.0	3.2	6.0

Inner diameter (D): 4.3mm, Outer diameter (E): 8.0mm

Part	L	D	E
DIST4380M-01	1.0	4.3	8.0
DIST4380M-02	2.0	4.3	8.0
DIST4380M-03	3.0	4.3	8.0
DIST4380M-04	4.0	4.3	8.0
DIST4380M-05	5.0	4.3	8.0
DIST4380M-06	6.0	4.3	8.0
DIST4380M-07	7.0	4.3	8.0
DIST4380M-08	8.0	4.3	8.0
DIST4380M-09	9.0	4.3	8.0
DIST4380M-10	10.0	4.3	8.0
DIST4380M-11	11.0	4.3	8.0
DIST4380M-12	12.0	4.3	8.0
DIST4380M-13	13.0	4.3	8.0
DIST4380M-14	14.0	4.3	8.0
DIST4380M-15	15.0	4.3	8.0
DIST4380M-16	16.0	4.3	8.0

Part	L	D	E
DIST4380M-17	17.0	4.3	8.0
DIST4380M-18	18.0	4.3	8.0
DIST4380M-20	20.0	4.3	8.0
DIST4380M-25	25.0	4.3	8.0
DIST4380M-26	26.0	4.3	8.0
DIST4380M-28	28.0	4.3	8.0
DIST4380M-30	30.0	4.3	8.0
DIST4380M-32	32.0	4.3	8.0
DIST4380M-33	33.0	4.3	8.0
DIST4380M-35	35.0	4.3	8.0
DIST4380M-40	40.0	4.3	8.0
DIST4380M-41	41.0	4.3	8.0
DIST4380M-45	45.0	4.3	8.0
DIST4380M-50	50.0	4.3	8.0
DIST4380M-60	60.0	4.3	8.0

DIST® - Spacer sleeve
brass (CuZn39Pb3)



Inner diameter (D): 5.3mm, Outer diameter (E): 10.0mm

Part	L	D	E
DIST53100M-02	2.0	5.3	10.0
DIST53100M-03	3.0	5.3	10.0
DIST53100M-04	4.0	5.3	10.0
DIST53100M-05	5.0	5.3	10.0
DIST53100M-06	6.0	5.3	10.0
DIST53100M-07	7.0	5.3	10.0
DIST53100M-08	8.0	5.3	10.0
DIST53100M-10	10.0	5.3	10.0
DIST53100M-11	11.0	5.3	10.0
DIST53100M-12	12.0	5.3	10.0
DIST53100M-13	13.0	5.3	10.0
DIST53100M-14	14.0	5.3	10.0
DIST53100M-15	15.0	5.3	10.0
DIST53100M-18	18.0	5.3	10.0

Part	L	D	E
DIST53100M-20	20.0	5.3	10.0
DIST53100M-22	22.0	5.3	10.0
DIST53100M-25	25.0	5.3	10.0
DIST53100M-28	28.0	5.3	10.0
DIST53100M-30	30.0	5.3	10.0
DIST53100M-32	32.0	5.3	10.0
DIST53100M-35	35.0	5.3	10.0
DIST53100M-37	37.0	5.3	10.0
DIST53100M-40	40.0	5.3	10.0
DIST53100M-45	45.0	5.3	10.0
DIST53100M-47	47.0	5.3	10.0
DIST53100M-50	50.0	5.3	10.0
DIST53100M-52	52.0	5.3	10.0
DIST53100M-58	58.0	5.3	10.0