

DIST® - Spacer sleeve
polyamide (PA)

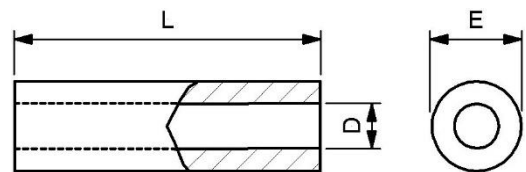
Spacer sleeve made of polyamide.

Material: polyamide (PA)
Inner diameter: 2.2, 2.7, 3.2, 3.4, 3.5, 4.1, 4.2, 4.5, 5.2, 6.2, 8.2, 9.6, 10.5, 12.5mm (D)
Outer diameter: 4, 5, 6, 7, 8, 10, 12, 16mm (E)
Length tolerances: according to ISO 2768-1M (medium)
RoHS compliant

We have a large stock range of these items in various materials, both plastic and metal. Further information and data sheets are available on our website.

Special versions in other dimensions and other materials are available on request via our [configuration form](#).

Further lengths up to 90mm, are available in 1mm increments.

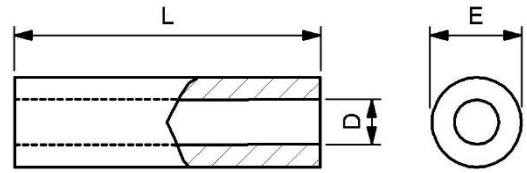


Inner diameter (D): 2.2mm, Outer diameter (E): 4.0mm

Part	L	D	E
DIST2240PA-02	2.0	2.2	4.0
DIST2240PA-03	3.0	2.2	4.0
DIST2240PA-04	4.0	2.2	4.0
DIST2240PA-05	5.0	2.2	4.0
DIST2240PA-06	6.0	2.2	4.0
DIST2240PA-07	7.0	2.2	4.0
DIST2240PA-08	8.0	2.2	4.0
DIST2240PA-09	9.0	2.2	4.0
DIST2240PA-10	10.0	2.2	4.0
DIST2240PA-11	11.0	2.2	4.0
DIST2240PA-12	12.0	2.2	4.0
DIST2240PA-13	13.0	2.2	4.0
DIST2240PA-14	14.0	2.2	4.0
DIST2240PA-15	15.0	2.2	4.0
DIST2240PA-16	16.0	2.2	4.0
DIST2240PA-17	17.0	2.2	4.0
DIST2240PA-18	18.0	2.2	4.0
DIST2240PA-19	19.0	2.2	4.0
DIST2240PA-20	20.0	2.2	4.0
DIST2240PA-21	21.0	2.2	4.0

Part	L	D	E
DIST2240PA-22	22.0	2.2	4.0
DIST2240PA-23	23.0	2.2	4.0
DIST2240PA-24	24.0	2.2	4.0
DIST2240PA-25	25.0	2.2	4.0
DIST2240PA-26	26.0	2.2	4.0
DIST2240PA-27	27.0	2.2	4.0
DIST2240PA-28	28.0	2.2	4.0
DIST2240PA-29	29.0	2.2	4.0
DIST2240PA-30	30.0	2.2	4.0
DIST2240PA-31	31.0	2.2	4.0
DIST2240PA-32	32.0	2.2	4.0
DIST2240PA-33	33.0	2.2	4.0
DIST2240PA-34	34.0	2.2	4.0
DIST2240PA-35	35.0	2.2	4.0
DIST2240PA-36	36.0	2.2	4.0
DIST2240PA-37	37.0	2.2	4.0
DIST2240PA-38	38.0	2.2	4.0
DIST2240PA-39	39.0	2.2	4.0
DIST2240PA-40	40.0	2.2	4.0
DIST2240PA-50	50.0	2.2	4.0

DIST® - Spacer sleeve
polyamide (PA)

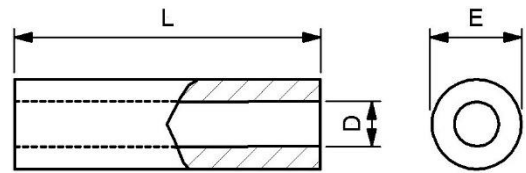


Inner diameter (D): 2.7mm, Outer diameter (E): 5.0mm

Part	L	D	E
DIST2750PA-02	2.0	2.7	5.0
DIST2750PA-03	3.0	2.7	5.0
DIST2750PA-04	4.0	2.7	5.0
DIST2750PA-05	5.0	2.7	5.0
DIST2750PA-06	6.0	2.7	5.0
DIST2750PA-07	7.0	2.7	5.0
DIST2750PA-08	8.0	2.7	5.0
DIST2750PA-09	9.0	2.7	5.0
DIST2750PA-10	10.0	2.7	5.0
DIST2750PA-11	11.0	2.7	5.0
DIST2750PA-12	12.0	2.7	5.0
DIST2750PA-13	13.0	2.7	5.0
DIST2750PA-14	14.0	2.7	5.0
DIST2750PA-15	15.0	2.7	5.0
DIST2750PA-16	16.0	2.7	5.0
DIST2750PA-17	17.0	2.7	5.0
DIST2750PA-18	18.0	2.7	5.0
DIST2750PA-19	19.0	2.7	5.0
DIST2750PA-20	20.0	2.7	5.0
DIST2750PA-21	21.0	2.7	5.0

Part	L	D	E
DIST2750PA-22	22.0	2.7	5.0
DIST2750PA-23	23.0	2.7	5.0
DIST2750PA-24	24.0	2.7	5.0
DIST2750PA-25	25.0	2.7	5.0
DIST2750PA-26	26.0	2.7	5.0
DIST2750PA-27	27.0	2.7	5.0
DIST2750PA-28	28.0	2.7	5.0
DIST2750PA-29	29.0	2.7	5.0
DIST2750PA-30	30.0	2.7	5.0
DIST2750PA-31	31.0	2.7	5.0
DIST2750PA-32	32.0	2.7	5.0
DIST2750PA-33	33.0	2.7	5.0
DIST2750PA-34	34.0	2.7	5.0
DIST2750PA-35	35.0	2.7	5.0
DIST2750PA-36	36.0	2.7	5.0
DIST2750PA-37	37.0	2.7	5.0
DIST2750PA-38	38.0	2.7	5.0
DIST2750PA-39	39.0	2.7	5.0
DIST2750PA-40	40.0	2.7	5.0

DIST® - Spacer sleeve
polyamide (PA)

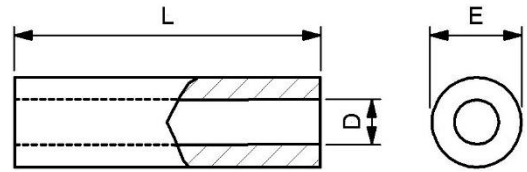


Inner diameter (D): 2.7mm, Outer diameter (E): 6.0mm

Part	L	D	E
DIST2760PA-02	2.0	2.7	6.0
DIST2760PA-03	3.0	2.7	6.0
DIST2760PA-04	4.0	2.7	6.0
DIST2760PA-05	5.0	2.7	6.0
DIST2760PA-06	6.0	2.7	6.0
DIST2760PA-07	7.0	2.7	6.0
DIST2760PA-08	8.0	2.7	6.0
DIST2760PA-09	9.0	2.7	6.0
DIST2760PA-10	10.0	2.7	6.0
DIST2760PA-11	11.0	2.7	6.0
DIST2760PA-12	12.0	2.7	6.0
DIST2760PA-13	13.0	2.7	6.0
DIST2760PA-14	14.0	2.7	6.0
DIST2760PA-15	15.0	2.7	6.0
DIST2760PA-16	16.0	2.7	6.0
DIST2760PA-17	17.0	2.7	6.0
DIST2760PA-18	18.0	2.7	6.0
DIST2760PA-19	19.0	2.7	6.0
DIST2760PA-20	20.0	2.7	6.0
DIST2760PA-21	21.0	2.7	6.0
DIST2760PA-22	22.0	2.7	6.0
DIST2760PA-23	23.0	2.7	6.0
DIST2760PA-24	24.0	2.7	6.0
DIST2760PA-25	25.0	2.7	6.0
DIST2760PA-26	26.0	2.7	6.0

Part	L	D	E
DIST2760PA-27	27.0	2.7	6.0
DIST2760PA-28	28.0	2.7	6.0
DIST2760PA-29	29.0	2.7	6.0
DIST2760PA-30	30.0	2.7	6.0
DIST2760PA-31	31.0	2.7	6.0
DIST2760PA-32	32.0	2.7	6.0
DIST2760PA-33	33.0	2.7	6.0
DIST2760PA-34	34.0	2.7	6.0
DIST2760PA-35	35.0	2.7	6.0
DIST2760PA-36	36.0	2.7	6.0
DIST2760PA-37	37.0	2.7	6.0
DIST2760PA-38	38.0	2.7	6.0
DIST2760PA-39	39.0	2.7	6.0
DIST2760PA-40	40.0	2.7	6.0
DIST2760PA-41	41.0	2.7	6.0
DIST2760PA-42	42.0	2.7	6.0
DIST2760PA-43	43.0	2.7	6.0
DIST2760PA-44	44.0	2.7	6.0
DIST2760PA-45	45.0	2.7	6.0
DIST2760PA-46	46.0	2.7	6.0
DIST2760PA-47	47.0	2.7	6.0
DIST2760PA-48	48.0	2.7	6.0
DIST2760PA-49	49.0	2.7	6.0
DIST2760PA-50	50.0	2.7	6.0

DIST® - Spacer sleeve
polyamide (PA)



Inner diameter (D): 3.2mm, Outer diameter (E): 5.0mm

Part	L	D	E
DIST3250PA-02	2.0	3.2	5.0
DIST3250PA-03	3.0	3.2	5.0
DIST3250PA-04	4.0	3.2	5.0
DIST3250PA-05	5.0	3.2	5.0
DIST3250PA-06	6.0	3.2	5.0
DIST3250PA-07	7.0	3.2	5.0
DIST3250PA-08	8.0	3.2	5.0
DIST3250PA-09	9.0	3.2	5.0
DIST3250PA-10	10.0	3.2	5.0
DIST3250PA-11	11.0	3.2	5.0
DIST3250PA-12	12.0	3.2	5.0
DIST3250PA-13	13.0	3.2	5.0
DIST3250PA-14	14.0	3.2	5.0
DIST3250PA-15	15.0	3.2	5.0
DIST3250PA-16	16.0	3.2	5.0
DIST3250PA-17	17.0	3.2	5.0

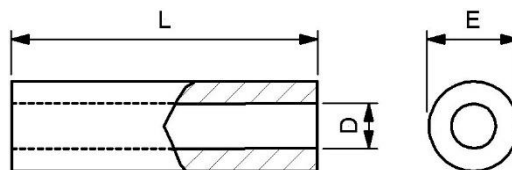
Part	L	D	E
DIST3250PA-18	18.0	3.2	5.0
DIST3250PA-19	19.0	3.2	5.0
DIST3250PA-20	20.0	3.2	5.0
DIST3250PA-21	21.0	3.2	5.0
DIST3250PA-22	22.0	3.2	5.0
DIST3250PA-23	23.0	3.2	5.0
DIST3250PA-24	24.0	3.2	5.0
DIST3250PA-25	25.0	3.2	5.0
DIST3250PA-26	26.0	3.2	5.0
DIST3250PA-27	27.0	3.2	5.0
DIST3250PA-28	28.0	3.2	5.0
DIST3250PA-29	29.0	3.2	5.0
DIST3250PA-30	30.0	3.2	5.0
DIST3250PA-34	34.0	3.2	5.0
DIST3250PA-38	38.0	3.2	5.0

Inner diameter (D): 3.2mm, Outer diameter (E): 6.0mm

Part	L	D	E
DIST3260PA-01	1.0	3.2	6.0
DIST3260PA-02	2.0	3.2	6.0
DIST3260PA-03	3.0	3.2	6.0
DIST3260PA-04	4.0	3.2	6.0
DIST3260PA-05	5.0	3.2	6.0
DIST3260PA-06	6.0	3.2	6.0
DIST3260PA-07	7.0	3.2	6.0
DIST3260PA-08	8.0	3.2	6.0
DIST3260PA-09	9.0	3.2	6.0
DIST3260PA-10	10.0	3.2	6.0
DIST3260PA-11	11.0	3.2	6.0
DIST3260PA-12	12.0	3.2	6.0
DIST3260PA-13	13.0	3.2	6.0
DIST3260PA-14	14.0	3.2	6.0
DIST3260PA-15	15.0	3.2	6.0
DIST3260PA-16	16.0	3.2	6.0
DIST3260PA-17	17.0	3.2	6.0

Part	L	D	E
DIST3260PA-18	18.0	3.2	6.0
DIST3260PA-19	19.0	3.2	6.0
DIST3260PA-20	20.0	3.2	6.0
DIST3260PA-22	22.0	3.2	6.0
DIST3260PA-26	26.0	3.2	6.0
DIST3260PA-27	27.0	3.2	6.0
DIST3260PA-28	28.0	3.2	6.0
DIST3260PA-29	29.0	3.2	6.0
DIST3260PA-30	30.0	3.2	6.0
DIST3260PA-32	32.0	3.2	6.0
DIST3260PA-33	33.0	3.2	6.0
DIST3260PA-34	34.0	3.2	6.0
DIST3260PA-45	45.0	3.2	6.0
DIST3260PA-48	48.0	3.2	6.0
DIST3260PA-50	50.0	3.2	6.0
DIST3260PA-60	60.0	3.2	6.0

DIST® - Spacer sleeve
polyamide (PA)



Inner diameter (D): 3.4mm, Outer diameter (E): 6.0mm

Part	L	D	E
DIST3460PA-02	2.0	3.4	6.0
DIST3460PA-03	3.0	3.4	6.0
DIST3460PA-04	4.0	3.4	6.0
DIST3460PA-05	5.0	3.4	6.0
DIST3460PA-06	6.0	3.4	6.0
DIST3460PA-07	7.0	3.4	6.0
DIST3460PA-08	8.0	3.4	6.0
DIST3460PA-09	9.0	3.4	6.0
DIST3460PA-10	10.0	3.4	6.0
DIST3460PA-11	11.0	3.4	6.0
DIST3460PA-12	12.0	3.4	6.0
DIST3460PA-13	13.0	3.4	6.0
DIST3460PA-14	14.0	3.4	6.0
DIST3460PA-15	15.0	3.4	6.0
DIST3460PA-16	16.0	3.4	6.0
DIST3460PA-17	17.0	3.4	6.0
DIST3460PA-18	18.0	3.4	6.0
DIST3460PA-19	19.0	3.4	6.0
DIST3460PA-20	20.0	3.4	6.0
DIST3460PA-21	21.0	3.4	6.0
DIST3460PA-22	22.0	3.4	6.0
DIST3460PA-23	23.0	3.4	6.0
DIST3460PA-24	24.0	3.4	6.0

Part	L	D	E
DIST3460PA-25	25.0	3.4	6.0
DIST3460PA-26	26.0	3.4	6.0
DIST3460PA-27	27.0	3.4	6.0
DIST3460PA-28	28.0	3.4	6.0
DIST3460PA-29	29.0	3.4	6.0
DIST3460PA-30	30.0	3.4	6.0
DIST3460PA-31	31.0	3.4	6.0
DIST3460PA-32	32.0	3.4	6.0
DIST3460PA-33	33.0	3.4	6.0
DIST3460PA-34	34.0	3.4	6.0
DIST3460PA-35	35.0	3.4	6.0
DIST3460PA-36	36.0	3.4	6.0
DIST3460PA-37	37.0	3.4	6.0
DIST3460PA-38	38.0	3.4	6.0
DIST3460PA-39	39.0	3.4	6.0
DIST3460PA-40	40.0	3.4	6.0
DIST3460PA-41	41.0	3.4	6.0
DIST3460PA-42	42.0	3.4	6.0
DIST3460PA-43	43.0	3.4	6.0
DIST3460PA-44	44.0	3.4	6.0
DIST3460PA-45	45.0	3.4	6.0
DIST3460PA-50	50.0	3.4	6.0

Inner diameter (D): 3.4mm, Outer diameter (E): 7.0mm

Part	L	D	E
DIST3470PA-01	1.0	3.4	7.0
DIST3470PA-02	2.0	3.4	7.0
DIST3470PA-03	3.0	3.4	7.0
DIST3470PA-05	5.0	3.4	7.0
DIST3470PA-06	6.0	3.4	7.0
DIST3470PA-07	7.0	3.4	7.0

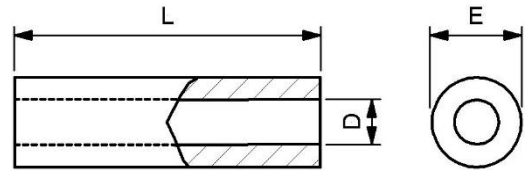
Part	L	D	E
DIST3470PA-08	8.0	3.4	7.0
DIST3470PA-10	10.0	3.4	7.0
DIST3470PA-14	14.0	3.4	7.0
DIST3470PA-15	15.0	3.4	7.0
DIST3470PA-17	17.0	3.4	7.0

Inner diameter (D): 3.5mm, Outer diameter (E): 8.0mm

Part	L	D	E
DIST3580PA-04	4.0	3.5	8.0
DIST3580PA-06	6.0	3.5	8.0

Part	L	D	E
DIST3580PA-20	20.0	3.5	8.0

DIST® - Spacer sleeve
polyamide (PA)

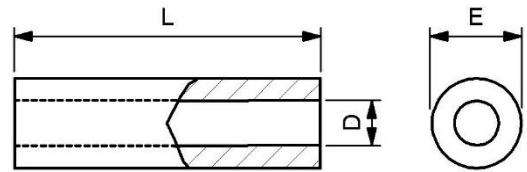


Inner diameter (D): 4.1mm, Outer diameter (E): 6.0mm

Part	L	D	E
DIST4160PA-02	2.0	4.1	6.0
DIST4160PA-03	3.0	4.1	6.0
DIST4160PA-04	4.0	4.1	6.0
DIST4160PA-05	5.0	4.1	6.0
DIST4160PA-06	6.0	4.1	6.0
DIST4160PA-07	7.0	4.1	6.0
DIST4160PA-08	8.0	4.1	6.0
DIST4160PA-09	9.0	4.1	6.0
DIST4160PA-10	10.0	4.1	6.0
DIST4160PA-11	11.0	4.1	6.0
DIST4160PA-12	12.0	4.1	6.0
DIST4160PA-13	13.0	4.1	6.0
DIST4160PA-14	14.0	4.1	6.0
DIST4160PA-15	15.0	4.1	6.0
DIST4160PA-16	16.0	4.1	6.0
DIST4160PA-17	17.0	4.1	6.0

Part	L	D	E
DIST4160PA-19	19.0	4.1	6.0
DIST4160PA-20	20.0	4.1	6.0
DIST4160PA-22	22.0	4.1	6.0
DIST4160PA-23	23.0	4.1	6.0
DIST4160PA-24	24.0	4.1	6.0
DIST4160PA-25	25.0	4.1	6.0
DIST4160PA-26	26.0	4.1	6.0
DIST4160PA-27	27.0	4.1	6.0
DIST4160PA-30	30.0	4.1	6.0
DIST4160PA-32	32.0	4.1	6.0
DIST4160PA-34	34.0	4.1	6.0
DIST4160PA-35	35.0	4.1	6.0
DIST4160PA-39	39.0	4.1	6.0
DIST4160PA-45	45.0	4.1	6.0
DIST4160PA-50	50.0	4.1	6.0

DIST® - Spacer sleeve
polyamide (PA)

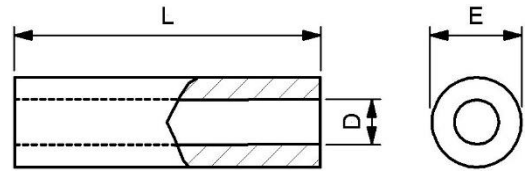


Inner diameter (D): 4.2mm, Outer diameter (E): 8.0mm

Part	L	D	E
DIST4280PA-02	2.0	4.2	8.0
DIST4280PA-03	3.0	4.2	8.0
DIST4280PA-04	4.0	4.2	8.0
DIST4280PA-05	5.0	4.2	8.0
DIST4280PA-06	6.0	4.2	8.0
DIST4280PA-07	7.0	4.2	8.0
DIST4280PA-08	8.0	4.2	8.0
DIST4280PA-09	9.0	4.2	8.0
DIST4280PA-10	10.0	4.2	8.0
DIST4280PA-11	11.0	4.2	8.0
DIST4280PA-12	12.0	4.2	8.0
DIST4280PA-13	13.0	4.2	8.0
DIST4280PA-14	14.0	4.2	8.0
DIST4280PA-15	15.0	4.2	8.0
DIST4280PA-16	16.0	4.2	8.0
DIST4280PA-17	17.0	4.2	8.0
DIST4280PA-18	18.0	4.2	8.0
DIST4280PA-19	19.0	4.2	8.0
DIST4280PA-20	20.0	4.2	8.0
DIST4280PA-21	21.0	4.2	8.0
DIST4280PA-22	22.0	4.2	8.0
DIST4280PA-23	23.0	4.2	8.0
DIST4280PA-24	24.0	4.2	8.0
DIST4280PA-25	25.0	4.2	8.0
DIST4280PA-26	26.0	4.2	8.0

Part	L	D	E
DIST4280PA-27	27.0	4.2	8.0
DIST4280PA-28	28.0	4.2	8.0
DIST4280PA-29	29.0	4.2	8.0
DIST4280PA-30	30.0	4.2	8.0
DIST4280PA-31	31.0	4.2	8.0
DIST4280PA-32	32.0	4.2	8.0
DIST4280PA-33	33.0	4.2	8.0
DIST4280PA-34	34.0	4.2	8.0
DIST4280PA-35	35.0	4.2	8.0
DIST4280PA-36	36.0	4.2	8.0
DIST4280PA-37	37.0	4.2	8.0
DIST4280PA-38	38.0	4.2	8.0
DIST4280PA-39	39.0	4.2	8.0
DIST4280PA-40	40.0	4.2	8.0
DIST4280PA-41	41.0	4.2	8.0
DIST4280PA-42	42.0	4.2	8.0
DIST4280PA-43	43.0	4.2	8.0
DIST4280PA-44	44.0	4.2	8.0
DIST4280PA-45	45.0	4.2	8.0
DIST4280PA-46	46.0	4.2	8.0
DIST4280PA-47	47.0	4.2	8.0
DIST4280PA-48	48.0	4.2	8.0
DIST4280PA-49	49.0	4.2	8.0
DIST4280PA-50	50.0	4.2	8.0
DIST4280PA-60	60.0	4.2	8.0

DIST® - Spacer sleeve
polyamide (PA)



Inner diameter (D): 4.5mm, Outer diameter (E): 7.0mm

Part	L	D	E
DIST4570PA-02	2.0	4.5	7.0
DIST4570PA-10	10.0	4.5	7.0
DIST4570PA-11	11.0	4.5	7.0

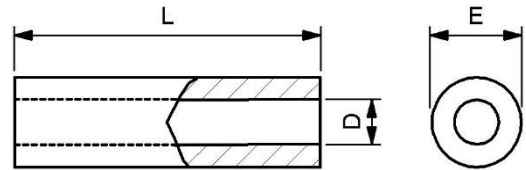
Part	L	D	E
DIST4570PA-14	14.0	4.5	7.0
DIST4570PA-16	16.0	4.5	7.0
DIST4570PA-24	24.0	4.5	7.0

Inner diameter (D): 5.2mm, Outer diameter (E): 10.0mm

Part	L	D	E
DIST52100PA-02	2.0	5.2	10.0
DIST52100PA-03	3.0	5.2	10.0
DIST52100PA-04	4.0	5.2	10.0
DIST52100PA-05	5.0	5.2	10.0
DIST52100PA-06	6.0	5.2	10.0
DIST52100PA-07	7.0	5.2	10.0
DIST52100PA-08	8.0	5.2	10.0
DIST52100PA-09	9.0	5.2	10.0
DIST52100PA-10	10.0	5.2	10.0
DIST52100PA-11	11.0	5.2	10.0
DIST52100PA-12	12.0	5.2	10.0
DIST52100PA-13	13.0	5.2	10.0
DIST52100PA-14	14.0	5.2	10.0
DIST52100PA-15	15.0	5.2	10.0
DIST52100PA-16	16.0	5.2	10.0
DIST52100PA-17	17.0	5.2	10.0
DIST52100PA-18	18.0	5.2	10.0
DIST52100PA-19	19.0	5.2	10.0
DIST52100PA-20	20.0	5.2	10.0
DIST52100PA-21	21.0	5.2	10.0
DIST52100PA-22	22.0	5.2	10.0
DIST52100PA-23	23.0	5.2	10.0
DIST52100PA-24	24.0	5.2	10.0
DIST52100PA-25	25.0	5.2	10.0

Part	L	D	E
DIST52100PA-26	26.0	5.2	10.0
DIST52100PA-27	27.0	5.2	10.0
DIST52100PA-28	28.0	5.2	10.0
DIST52100PA-29	29.0	5.2	10.0
DIST52100PA-30	30.0	5.2	10.0
DIST52100PA-31	31.0	5.2	10.0
DIST52100PA-32	32.0	5.2	10.0
DIST52100PA-33	33.0	5.2	10.0
DIST52100PA-34	34.0	5.2	10.0
DIST52100PA-35	35.0	5.2	10.0
DIST52100PA-36	36.0	5.2	10.0
DIST52100PA-37	37.0	5.2	10.0
DIST52100PA-38	38.0	5.2	10.0
DIST52100PA-39	39.0	5.2	10.0
DIST52100PA-40	40.0	5.2	10.0
DIST52100PA-41	41.0	5.2	10.0
DIST52100PA-42	42.0	5.2	10.0
DIST52100PA-43	43.0	5.2	10.0
DIST52100PA-44	44.0	5.2	10.0
DIST52100PA-45	45.0	5.2	10.0
DIST52100PA-49	49.0	5.2	10.0
DIST52100PA-50	50.0	5.2	10.0
DIST52100PA-55	55.0	5.2	10.0
DIST52100PA-57	57.0	5.2	10.0

DIST® - Spacer sleeve
polyamide (PA)



Inner diameter (D): 5.2mm, Outer diameter (E): 12.0mm

Part	L	D	E
DIST52120PA-06	6.0	5.2	12.0
DIST52120PA-08	8.0	5.2	12.0
DIST52120PA-10	10.0	5.2	12.0

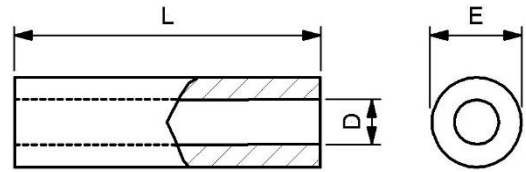
Part	L	D	E
DIST52120PA-20	20.0	5.2	12.0
DIST52120PA-38	38.0	5.2	12.0

Inner diameter (D): 5.2mm, Outer diameter (E): 10.0mm

Part	L	D	E
DIST52100PA-02	2.0	5.2	10.0
DIST52100PA-03	3.0	5.2	10.0
DIST52100PA-04	4.0	5.2	10.0
DIST52100PA-05	5.0	5.2	10.0
DIST52100PA-06	6.0	5.2	10.0
DIST52100PA-07	7.0	5.2	10.0
DIST52100PA-08	8.0	5.2	10.0
DIST52100PA-09	9.0	5.2	10.0
DIST52100PA-10	10.0	5.2	10.0
DIST52100PA-11	11.0	5.2	10.0
DIST52100PA-12	12.0	5.2	10.0
DIST52100PA-13	13.0	5.2	10.0
DIST52100PA-14	14.0	5.2	10.0
DIST52100PA-15	15.0	5.2	10.0
DIST52100PA-16	16.0	5.2	10.0
DIST52100PA-17	17.0	5.2	10.0
DIST52100PA-18	18.0	5.2	10.0
DIST52100PA-19	19.0	5.2	10.0
DIST52100PA-20	20.0	5.2	10.0
DIST52100PA-21	21.0	5.2	10.0
DIST52100PA-22	22.0	5.2	10.0
DIST52100PA-23	23.0	5.2	10.0
DIST52100PA-24	24.0	5.2	10.0
DIST52100PA-25	25.0	5.2	10.0

Part	L	D	E
DIST52100PA-26	26.0	5.2	10.0
DIST52100PA-27	27.0	5.2	10.0
DIST52100PA-28	28.0	5.2	10.0
DIST52100PA-29	29.0	5.2	10.0
DIST52100PA-30	30.0	5.2	10.0
DIST52100PA-31	31.0	5.2	10.0
DIST52100PA-32	32.0	5.2	10.0
DIST52100PA-33	33.0	5.2	10.0
DIST52100PA-34	34.0	5.2	10.0
DIST52100PA-35	35.0	5.2	10.0
DIST52100PA-36	36.0	5.2	10.0
DIST52100PA-37	37.0	5.2	10.0
DIST52100PA-38	38.0	5.2	10.0
DIST52100PA-39	39.0	5.2	10.0
DIST52100PA-40	40.0	5.2	10.0
DIST52100PA-41	41.0	5.2	10.0
DIST52100PA-42	42.0	5.2	10.0
DIST52100PA-43	43.0	5.2	10.0
DIST52100PA-44	44.0	5.2	10.0
DIST52100PA-45	45.0	5.2	10.0
DIST52100PA-49	49.0	5.2	10.0
DIST52100PA-50	50.0	5.2	10.0
DIST52100PA-55	55.0	5.2	10.0
DIST52100PA-57	57.0	5.2	10.0

DIST® - Spacer sleeve
polyamide (PA)



Inner diameter (D): 6.2mm, Outer diameter (E): 8.0mm

Part	L	D	E
DIST6280PA-06	6.0	6.2	8.0
DIST6280PA-12	12.0	6.2	8.0

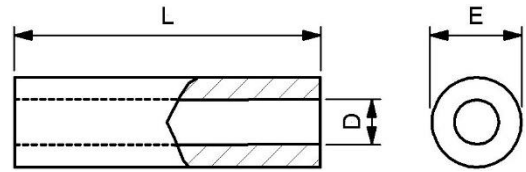
Part	L	D	E
DIST6280PA-20	20.0	6.2	8.0

Inner diameter (D): 6.2mm, Outer diameter (E): 10.0mm

Part	L	D	E
DIST62100PA-02	2.0	6.2	10.0
DIST62100PA-03	3.0	6.2	10.0
DIST62100PA-04	4.0	6.2	10.0
DIST62100PA-05	5.0	6.2	10.0
DIST62100PA-06	6.0	6.2	10.0
DIST62100PA-07	7.0	6.2	10.0
DIST62100PA-08	8.0	6.2	10.0
DIST62100PA-09	9.0	6.2	10.0
DIST62100PA-10	10.0	6.2	10.0
DIST62100PA-11	11.0	6.2	10.0
DIST62100PA-12	12.0	6.2	10.0
DIST62100PA-13	13.0	6.2	10.0
DIST62100PA-14	14.0	6.2	10.0
DIST62100PA-15	15.0	6.2	10.0
DIST62100PA-16	16.0	6.2	10.0
DIST62100PA-17	17.0	6.2	10.0
DIST62100PA-18	18.0	6.2	10.0
DIST62100PA-19	19.0	6.2	10.0
DIST62100PA-20	20.0	6.2	10.0
DIST62100PA-21	21.0	6.2	10.0
DIST62100PA-22	22.0	6.2	10.0
DIST62100PA-23	23.0	6.2	10.0
DIST62100PA-24	24.0	6.2	10.0
DIST62100PA-25	25.0	6.2	10.0
DIST62100PA-26	26.0	6.2	10.0

Part	L	D	E
DIST62100PA-27	27.0	6.2	10.0
DIST62100PA-28	28.0	6.2	10.0
DIST62100PA-29	29.0	6.2	10.0
DIST62100PA-30	30.0	6.2	10.0
DIST62100PA-31	31.0	6.2	10.0
DIST62100PA-32	32.0	6.2	10.0
DIST62100PA-33	33.0	6.2	10.0
DIST62100PA-34	34.0	6.2	10.0
DIST62100PA-35	35.0	6.2	10.0
DIST62100PA-36	36.0	6.2	10.0
DIST62100PA-37	37.0	6.2	10.0
DIST62100PA-38	38.0	6.2	10.0
DIST62100PA-39	39.0	6.2	10.0
DIST62100PA-40	40.0	6.2	10.0
DIST62100PA-41	41.0	6.2	10.0
DIST62100PA-42	42.0	6.2	10.0
DIST62100PA-43	43.0	6.2	10.0
DIST62100PA-44	44.0	6.2	10.0
DIST62100PA-45	45.0	6.2	10.0
DIST62100PA-46	46.0	6.2	10.0
DIST62100PA-47	47.0	6.2	10.0
DIST62100PA-48	48.0	6.2	10.0
DIST62100PA-49	49.0	6.2	10.0
DIST62100PA-50	50.0	6.2	10.0
DIST62100PA-55	55.0	6.2	10.0

DIST® - Spacer sleeve
polyamide (PA)

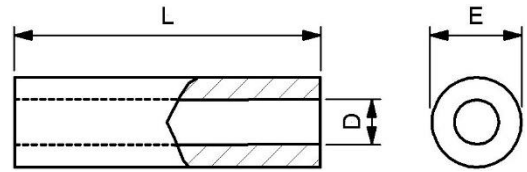


Inner diameter (D): 6.2mm, Outer diameter (E): 12.0mm

Part	L	D	E
DIST62120PA-02	2.0	6.2	12.0
DIST62120PA-03	3.0	6.2	12.0
DIST62120PA-04	4.0	6.2	12.0
DIST62120PA-05	5.0	6.2	12.0
DIST62120PA-06	6.0	6.2	12.0
DIST62120PA-07	7.0	6.2	12.0
DIST62120PA-08	8.0	6.2	12.0
DIST62120PA-09	9.0	6.2	12.0
DIST62120PA-10	10.0	6.2	12.0
DIST62120PA-12	12.0	6.2	12.0
DIST62120PA-14	14.0	6.2	12.0
DIST62120PA-15	15.0	6.2	12.0
DIST62120PA-16	16.0	6.2	12.0
DIST62120PA-17	17.0	6.2	12.0

Part	L	D	E
DIST62120PA-18	18.0	6.2	12.0
DIST62120PA-20	20.0	6.2	12.0
DIST62120PA-23	23.0	6.2	12.0
DIST62120PA-25	25.0	6.2	12.0
DIST62120PA-34	34.0	6.2	12.0
DIST62120PA-35	35.0	6.2	12.0
DIST62120PA-38	38.0	6.2	12.0
DIST62120PA-40	40.0	6.2	12.0
DIST62120PA-48	48.0	6.2	12.0
DIST62120PA-53	53.0	6.2	12.0
DIST62120PA-60	60.0	6.2	12.0
DIST62120PA-63	63.0	6.2	12.0
DIST62120PA-64	64.0	6.2	12.0
DIST62120PA-65	65.0	6.2	12.0

DIST® - Spacer sleeve
polyamide (PA)



Inner diameter (D): 8.2mm, Outer diameter (E): 12.0mm

Part	L	D	E
DIST82120PA-02	2.0	8.2	12.0
DIST82120PA-03	3.0	8.2	12.0
DIST82120PA-04	4.0	8.2	12.0
DIST82120PA-05	5.0	8.2	12.0
DIST82120PA-06	6.0	8.2	12.0
DIST82120PA-07	7.0	8.2	12.0
DIST82120PA-08	8.0	8.2	12.0
DIST82120PA-09	9.0	8.2	12.0
DIST82120PA-10	10.0	8.2	12.0
DIST82120PA-11	11.0	8.2	12.0
DIST82120PA-12	12.0	8.2	12.0
DIST82120PA-13	13.0	8.2	12.0
DIST82120PA-14	14.0	8.2	12.0
DIST82120PA-15	15.0	8.2	12.0
DIST82120PA-16	16.0	8.2	12.0
DIST82120PA-17	17.0	8.2	12.0
DIST82120PA-18	18.0	8.2	12.0
DIST82120PA-19	19.0	8.2	12.0
DIST82120PA-20	20.0	8.2	12.0
DIST82120PA-21	21.0	8.2	12.0

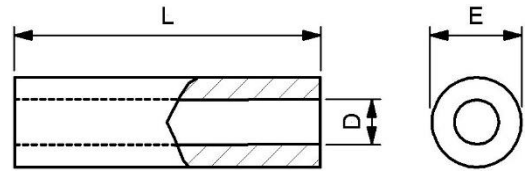
Part	L	D	E
DIST82120PA-24	24.0	8.2	12.0
DIST82120PA-25	25.0	8.2	12.0
DIST82120PA-26	26.0	8.2	12.0
DIST82120PA-30	30.0	8.2	12.0
DIST82120PA-32	32.0	8.2	12.0
DIST82120PA-33	33.0	8.2	12.0
DIST82120PA-35	35.0	8.2	12.0
DIST82120PA-36	36.0	8.2	12.0
DIST82120PA-37	37.0	8.2	12.0
DIST82120PA-39	39.0	8.2	12.0
DIST82120PA-40	40.0	8.2	12.0
DIST82120PA-41	41.0	8.2	12.0
DIST82120PA-42	42.0	8.2	12.0
DIST82120PA-43	43.0	8.2	12.0
DIST82120PA-45	45.0	8.2	12.0
DIST82120PA-48	48.0	8.2	12.0
DIST82120PA-50	50.0	8.2	12.0
DIST82120PA-52	52.0	8.2	12.0
DIST82120PA-60	60.0	8.2	12.0
DIST82120PA-66	66.0	8.2	12.0

Inner diameter (D): 9.6mm, Outer diameter (E): 12.0mm

Part	L	D	E
DIST96120PA-02	2.0	9.6	12.0
DIST96120PA-05	5.0	9.6	12.0
DIST96120PA-06	6.0	9.6	12.0
DIST96120PA-07	7.0	9.6	12.0
DIST96120PA-08	8.0	9.6	12.0
DIST96120PA-09	9.0	9.6	12.0
DIST96120PA-10	10.0	9.6	12.0
DIST96120PA-11	11.0	9.6	12.0
DIST96120PA-12	12.0	9.6	12.0
DIST96120PA-13	13.0	9.6	12.0

Part	L	D	E
DIST96120PA-14	14.0	9.6	12.0
DIST96120PA-15	15.0	9.6	12.0
DIST96120PA-18	18.0	9.6	12.0
DIST96120PA-20	20.0	9.6	12.0
DIST96120PA-22	22.0	9.6	12.0
DIST96120PA-23	23.0	9.6	12.0
DIST96120PA-24	24.0	9.6	12.0
DIST96120PA-29	29.0	9.6	12.0
DIST96120PA-50	50.0	9.6	12.0

DIST® - Spacer sleeve
polyamide (PA)



Inner diameter (D): 10.5mm, Outer diameter (E): 16.0mm

Part	L	D	E
DIST105160PA-02	2.0	10.5	16.0
DIST105160PA-03	3.0	10.5	16.0
DIST105160PA-04	4.0	10.5	16.0
DIST105160PA-05	5.0	10.5	16.0
DIST105160PA-06	6.0	10.5	16.0
DIST105160PA-07	7.0	10.5	16.0
DIST105160PA-08	8.0	10.5	16.0
DIST105160PA-09	9.0	10.5	16.0
DIST105160PA-10	10.0	10.5	16.0
DIST105160PA-11	11.0	10.5	16.0
DIST105160PA-12	12.0	10.5	16.0
DIST105160PA-13	13.0	10.5	16.0
DIST105160PA-14	14.0	10.5	16.0

Part	L	D	E
DIST105160PA-16	16.0	10.5	16.0
DIST105160PA-19	19.0	10.5	16.0
DIST105160PA-20	20.0	10.5	16.0
DIST105160PA-21	21.0	10.5	16.0
DIST105160PA-25	25.0	10.5	16.0
DIST105160PA-26	26.0	10.5	16.0
DIST105160PA-30	30.0	10.5	16.0
DIST105160PA-32	32.0	10.5	16.0
DIST105160PA-34	34.0	10.5	16.0
DIST105160PA-35	35.0	10.5	16.0
DIST105160PA-38	38.0	10.5	16.0
DIST105160PA-40	40.0	10.5	16.0
DIST105160PA-45	45.0	10.5	16.0

Inner diameter (D): 12.5mm, Outer diameter (E): 16.0mm

Part	L	D	E
DIST125160PA-02	2.0	12.5	16.0
DIST125160PA-04	4.0	12.5	16.0
DIST125160PA-05	5.0	12.5	16.0
DIST125160PA-07	7.0	12.5	16.0
DIST125160PA-08	8.0	12.5	16.0
DIST125160PA-09	9.0	12.5	16.0
DIST125160PA-10	10.0	12.5	16.0
DIST125160PA-12	12.0	12.5	16.0

Part	L	D	E
DIST125160PA-15	15.0	12.5	16.0
DIST125160PA-16	16.0	12.5	16.0
DIST125160PA-20	20.0	12.5	16.0
DIST125160PA-25	25.0	12.5	16.0
DIST125160PA-30	30.0	12.5	16.0
DIST125160PA-45	45.0	12.5	16.0
DIST125160PA-50	50.0	12.5	16.0