

Indicator lights with colour cap

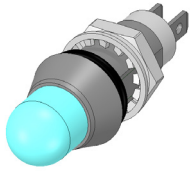
Rotation-proof
Option: waterproof IP64 / IP67 / IP68

Signalleuchten mit Farbkappen

Verdrehsicher
Option: wasserdicht IP64 / IP67 / IP68

Voyants lumineux avec capuchon

Anti-rotation
Option: étanche IP64 / IP67 / IP68



3D Step-file
available on request



Series 174 / 177 / 178



1781816A1Y50UB

Further specifications and options in section „F-H“ / Weitere Spezifikationen und Optionen in Kapitel „F-H“ / Autres spécifications et options au chapitre „F-H“

Type / Typ / Type	Body / Körper / Corps		Accessories Zubehör Accessoires	Colour caps with.. Farbkappen mit.. Capuchons encreurs avec..		Light source Lichtquelle Source lum.	Voltage Spannung Tension					
	Surface Oberfläche Surface	Protection Schutzart Protection		Fresnel	LED Ø 5mm		Code	V	mA			
174 Faston 2.8 x 0.5	B Brass, blackened Messing, geschwärzt Laiton, noirci	4 IP64	1	6 domed gewölbt dôme	A1 Amber Orange Orange	Y54U 7'000 mcd	Yellow Gelb Jaune	0	without ohne sans			
	S Brass, nickel plated Messing, vernickelt Laiton, nickelé	7 IP67			B1 Blue Blau Bleu	Y50U 3'000 mcd		A	5	20		
	5 Stainless steel Edelstahl Acier inoxydable	8 IP68	5 Stainless steel 1.4305 Edelstahl 1.4305 Acier inoxydable		C1 Clear Klar Clair	Y501 80 mcd		B	12	20		
	6 Stainless steel, blackened Edelstahl, geschwärzt Acier inoxydable, noirci				G1 Green Grün Vert	B91G 9'000 mcd	Blue Blau Bleu	D	24	20		
	9 Brass, olive drab** Messing, olivebraun** Laiton, olivebrun**				R1 Red Rot Rouge	B21G 2'120 mcd		E	28	20		
177 LED terminals LED-Anschlüsse Fils des LEDs					W3 White Weiss Blanc	B61G 1'160 mcd		CL	9-48	20	constant current driver	
						G81N 32'500 mcd	Green Grün Vert				only for Series 174, 178 and only for single colour	
						G71N 5'620 mcd						
						G501 80 mcd			CL1	5-28	20	constant current driver
						R54U 7'000 mcd	Red Rot Rouge					only for Series 174, 178 and only for single colour
178 Stranded wire Litze Fil multi-brins Ø 0.14mm² (AWG 26)						R50U 3'000 mcd						
						R521 80 mcd			Z	230	5	only for Series 178*
	1 Brass, blackened Messing, geschwärzt Laiton, noirci	4 IP64	1	6 domed gewölbt dôme	A1 Amber Orange Orange	W55N 22'000 mcd	White Weiss Blanc					
	2 Brass, nickel plated Messing, vernickelt Laiton, nickelé	7 IP67			B1 Blue Blau Bleu	W50N 2'320 mcd						
	5 Stainless steel Edelstahl Acier inoxydable	8 IP68	5 Stainless steel 1.4305 Edelstahl 1.4305 Acier inoxydable		C1 Clear Klar Clair	RGKW common cathode only series 177, 178	Red-Green Rot-Grün Rouge-Vert					
6 Stainless steel, blackened Edelstahl, geschwärzt Acier inoxydable, noirci				G1 Green Grün Vert	RGVW common anode only series 177, 178							
9 Brass, olive drab** Messing, olivebraun** Laiton, olivebrun**				R1 Red Rot Rouge								
				W3 White Weiss Blanc								

Operating Temperature -30° to +85°C / Storage Temperature: -40° to +100°C / 230V Operating Temperature -30° to +65°C

RoHS compliant / ** except surface option 9 (none RoHS)

Specifications are subject to change without notice

Änderungen die dem technischen Fortschritt dienen, sind vorbehalten

Réserve de modifications de toutes les données techniques

different LED's of the SLOAN range can be built in

*refer to installation instructions for 230V version in chapter „G“

17..

