

## THT LED

Ø 5mm red

- high luminosity
- long lifetime up to 75'000 hours
- high quality for professional application
- RoHS compliant



Part Number	Old Part Number	Peak Wavelength	Intensity (mcd)			Angle (deg)	Voltage (V)		Lens Colour	Type
			min	typ	max		typ	max		
SLO-234R-00006	L5-R50U	● 627nm	2500	3200	5500	30°	2.20	2.5	waterclear	2
SLO-234R-00012	L5-R52U	● 620nm	4200	-	7200	30°	2.10	2.4	waterclear	2
SLO-234R-00014	L5-R521	● 635nm	65	80	-	22°	2.00	2.6	diffused	3
SLO-234R-00015	L5-R54U	● 635nm	12000	-	27300	15°	2.10	2.4	waterclear	2
SLO-234R-00016	L5-R55N-RSTU	● 635nm	3400	5000	9600	30°	2.10	2.5	waterclear	4
SLO-234R-00019	L5-R81Q-2	● 660nm	1000	-	4000	22°	1.80	2.4	waterclear	5
SLO-234R-00021	L5-R91H	● 621nm	9300	-	27000	8°	1.94	2.4	waterclear	1

### Electro-Optical-Characteristics Ta=25°C, Forward Current: IF Typical = 20mA,

1/10 Duty Cycle, 10ms Pulse Width: up to 110mA, depending on type number.

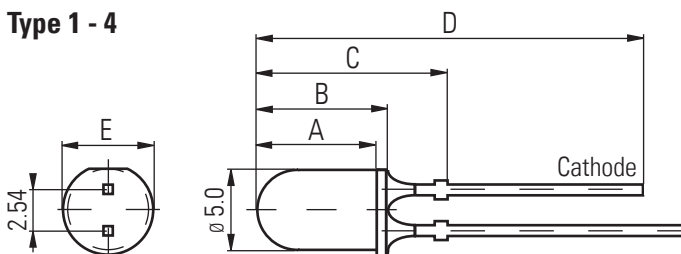
Storage Temp. -40 ~+100 (°C) Operating Temp. -30 ~+85 (°C)

Detailed data sheets are available on request

Packaging: 500pcs/bulk

### Dimensions (mm)

Type 1 - 4



Type	A	B	C	D	E
1	7.6	8.7	NA	31.6	5.8
2	7.6	8.6	NA	33.0	5.7
3	7.6	8.6	NA	34.0	5.7
4	7.1	8.3	12.1	28.6	5.6
5	7.6	8.6	NA	25.5	5.7

1. All dimensions are in millimetres
2. Tolerance is ±0.25mm unless otherwise specified
3. Specifications are subject to change without notice