

H0-Series 16.0 x 12.0mm






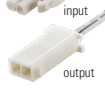

High bright (LED type 2835)

Specifications

Dimensions	16.0 x 12.0 mm (W x H)
Voltage	24V
Current	~1A/m
Wattage	23W/m
Brightness	~ 1400lm/m
Number of LED's	112pcs/m
Operating Temperature	-20°~+40°C
Storage Temperature	-40°~+80°C
Viewing Angle	~110°
CE	
RoHS compliant	

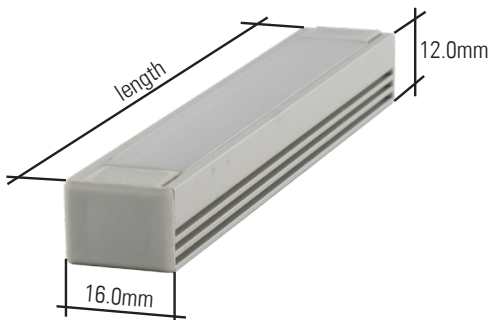


Further technical information in „Profile Specifications“

Profile Type	Colour of Profile	Length of Profile (incl. end-caps)	Cover	Cable Input	Cable Output	Cable Length	Connector	Mounting Clip	Lightsource	Voltage
H0	1 natural anodized <small>other colours on request</small>	027 270mm*	1 white diffused	1 lateral cable input 	1 lateral cable output 	050 50cm <small>other length on request</small>	0 without connector (wire leads) 	0 without clips	N01  warm-white 2800-3500K	D 24VDC
		039 390mm*								
		046 460mm*	2 rear cable output 	2 with snap-in connector  input output	W01  cold-white 5500-6500K					
		058 580mm*								
		064 640mm*								
		082 820mm*								
		089 890mm*								
		095 950mm* <small>other length on request</small> <small>*Tolerance: +/-2mm</small>								



Warning: Do not connect more than 3m in a row



1. All dimensions are in millimetres
2. Tolerance is ±0.25mm unless otherwise specified
3. Specifications are subject to change without notice

Please also take note of our **General Information for LED Products**