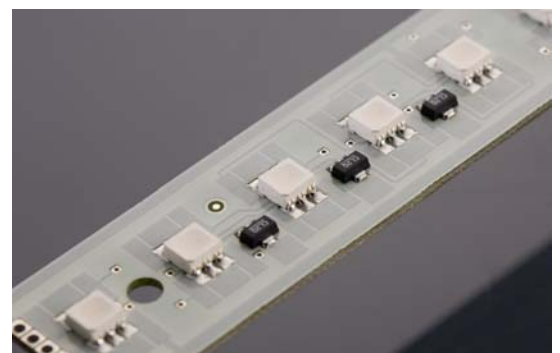
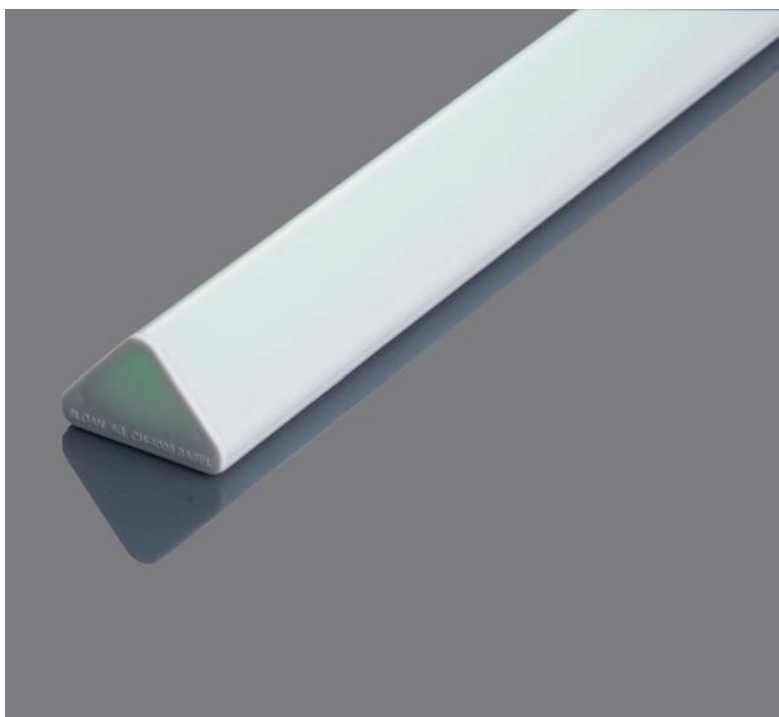


## RGB-Tubelight For Outdoor Application

This white LED light component can be used both with RGB LED's for accent lighting as well as with single-colour or white LED's. The diffuse white surface as well as the optimal arrangement of the SMD LED creates homogeneous lighting and excellent colour reproduction over the entire body of the light component. This robust, waterproof and UV-resistant light component is ideally suited for outside and inside use. By means of winged screws supplied for assembly, the component can be directly mounted on various surfaces. A cable conduit on the underside permits power supply without any additional substructure. The RGB LED is controlled by a conventional 24 VDC RGB control unit.

**Application:** Architectural Illumination  
Exit light  
Outdoor Application  
Illumination of complex structures

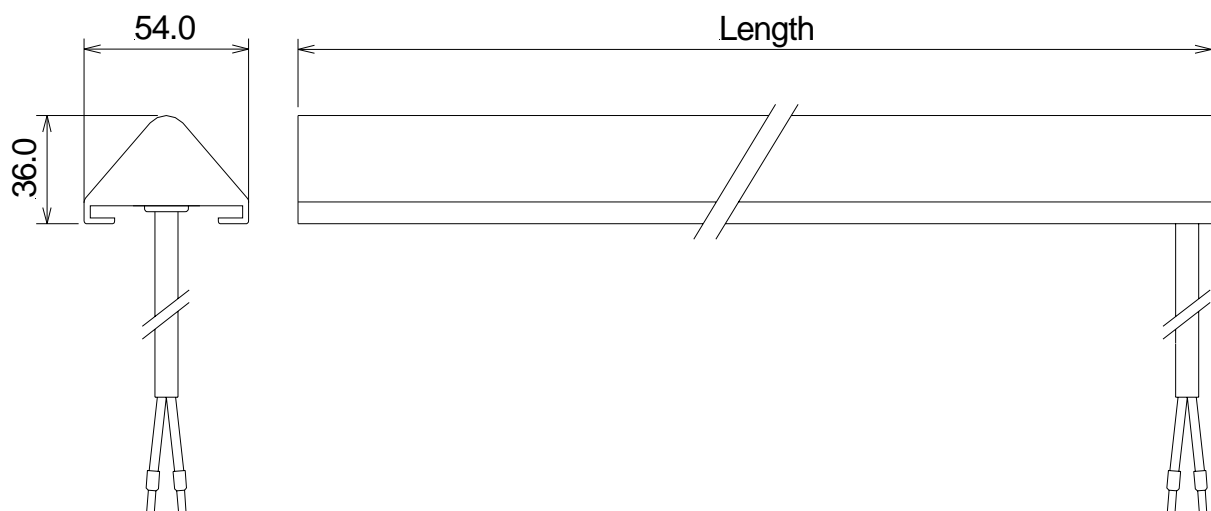
**Benefits:** 24V low voltage source  
Low mounting height  
Waterproof  
No maintenance



Part-Number	Length [mm]	Current [mA]	Power [W]
200 13 001	430	300	7.2
200 13 002	830	600	14.4
200 13 003	1230	900	21.6
200 13 004	1630	1200	28.8
200 13 005	2030	1500	36.0
200 13 006	2430	1800	43.2
200 13 007	2830	2100	50.4
200 13 008	3230	2400	57.6

Voltage: 24V DC  
 Lightsource: SMD LED  
 Protection: IP67  
 Temperature: -30°C ~ +70°C  
 Lifetime: ~ 50'000 hours  
 Housing: Makrolon DP1-1853  
 IK07-IK08  
 Colour milky white  
 UL 94V-0  
 Free of halogen

## Drawing No 1

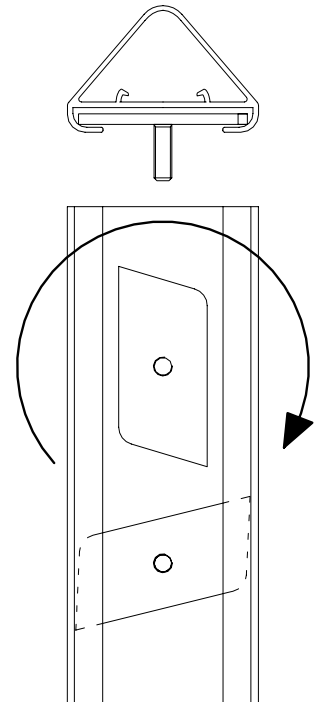
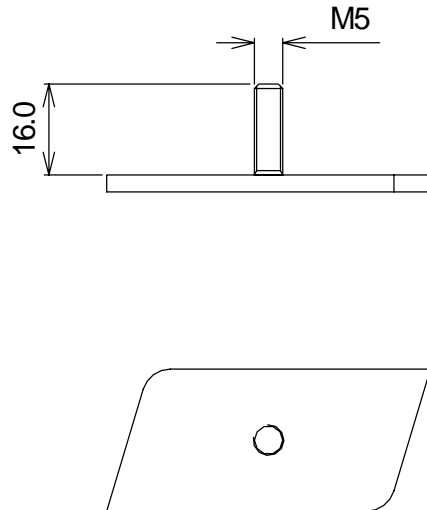


- All dimensions are in millimetres.
- Tolerance is  $\pm 0.25\text{mm}$  unless otherwise specified.
- Specifications are subject to change without notice

## Profile-Fixation

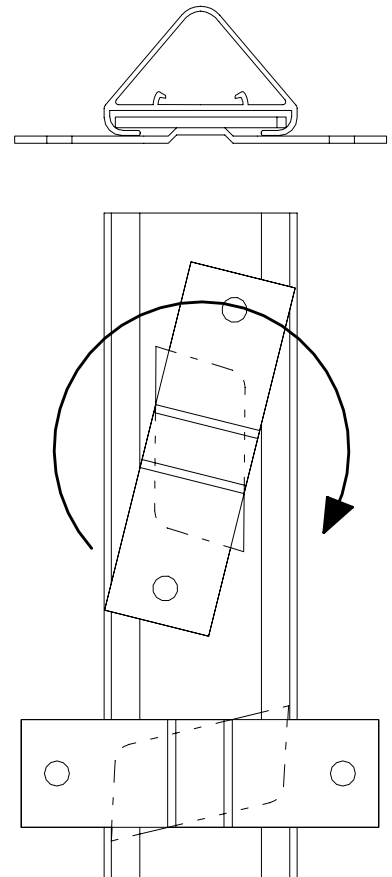
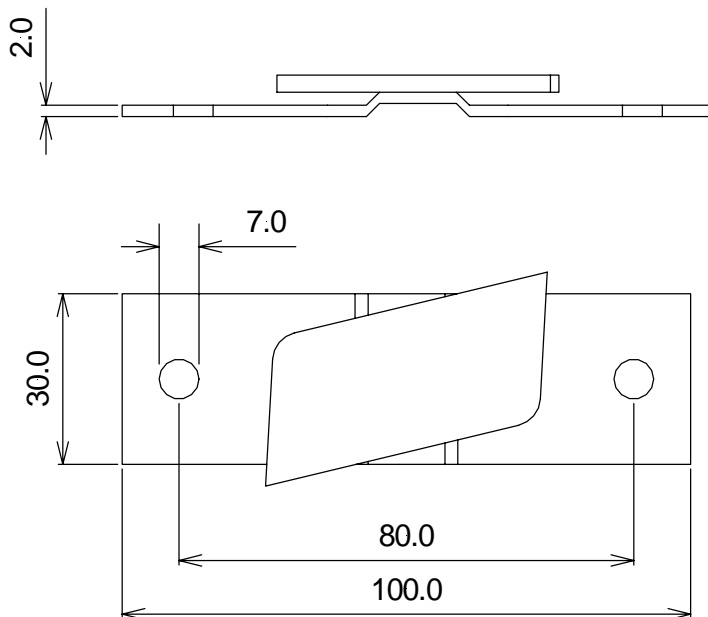
**Part-Number: 200 05 110**

Material: Steel V4A 1.4301



**Part-Number: 200 05 111**

Material: Steel V4A 1.4301



1. All dimensions are in millimetres
2. Tolerance is  $\pm 0.25$  mm unless otherwise specified
4. Specifications are subject to change without notice