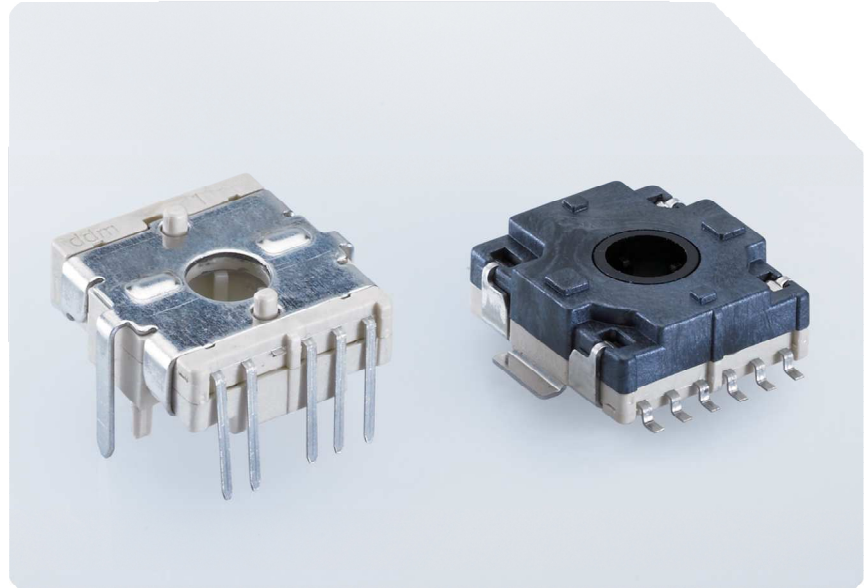


ENCODER | ENCODER

sibalcoSibalco AG • Birmanngasse 8
CH-4009 Basel • Switzerland
T +41 61 264 10 10 • F +41 61 264 10 15
info@sibalco.ch • www.sibalco.com**512****Ausführung**

- Miniatur-Encoder mit Gray- oder Inkrementalcode
- 16 oder 18 Schaltstellungen
- Vertikale Betätigung
- Verschiedene Drehmomente
- Ohne oder mit Endschalter

Anschlüsse

SMD- oder THT-Ausführung

Abmessungen

18 x 19,5 x 7,6 mm

512**Construction**

- Miniature encoder with gray or incremental code
- 16 or 18 positions
- Operated vertically
- Various torques
- Without or with end switch

Pining

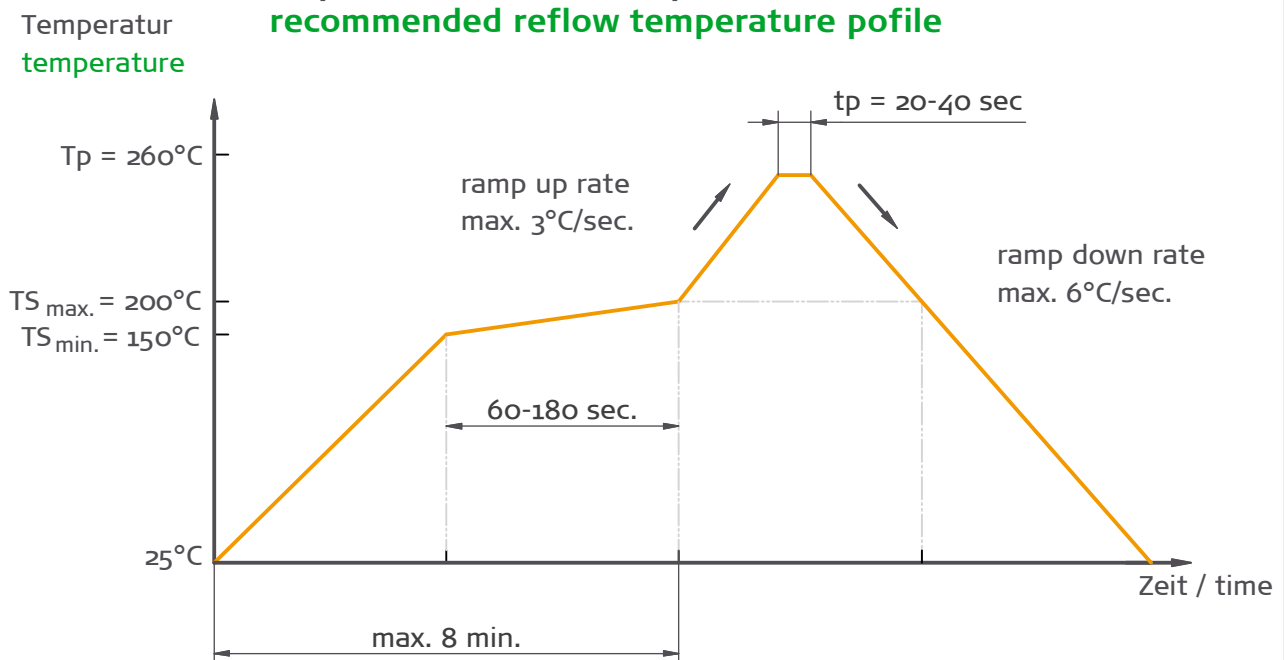
SMD or THT design

Dimensions

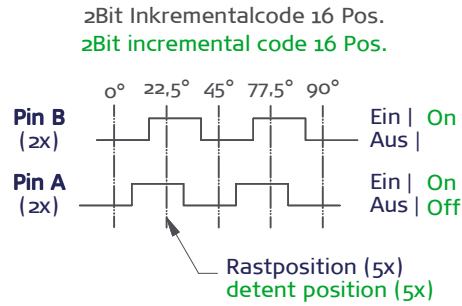
18 x 19,5 x 7,6 mm

Ausführung Construction	Schaltweise Anschlussmaße Abmessungen	interruptive See drawings See drawings	Function Pining Outline Dimensions
Isolierwerkstoffe Insulation Material	Gehäuse Kontaktträger Blechbügel	Thermoplastic-UL-94-Vo Thermoplastic-UL-94-Vo Nirosta	Housing Contact Body metal cover
Kontaktwerkstoffe Contact Material	Festkontakte Schaltkontakte Lötanschlüsse	CuNi gal. min. 0,5 µm Au or silver as an alternative CuSn6 gal. Au flash or silver as an alternative CuNi gal. min 2 µm Sn	Fixed Contacts Sliding Contacts Pins
Elektrische Daten Electrical Data	Schaltspannung Schaltstrom max. Schaltleistung Übergangswiderstand Isolierwiderstand Prellung und Signaleinbruch	max. 24 VDC max. 100 mA 0,6 VA < 100 mOhm > 100 MOhm < 6 ms	Switching Voltage Switching Current Electrical Power Contact Resistance Insulation Resistance Bouncing
Mechanische Daten Mechanical Data	Lebensdauer Betriebstemperatur Lagertemperatur Lötbedingungen / Art Betätigungskraft Vibrationsfestigkeit	> 10000 operations -50 °C to +125 °C -55 °C to +135 °C acc. to IPC/JEDEC J-STD -020C Tab. 4-2 (max. peak temperature +260°) 1-6 Ncm / 6 N acc. to IEC 60 068-2-6:10g from 30-300 Hz	Life Expectancy Operation Temperature Storage Temperature Soldering Time / Conditions Operating Force Vibration Resistance

**Empfohlene Reflow Temperaturkurve
recommended reflow temperature profile**



Schaltercodierung | switch coding



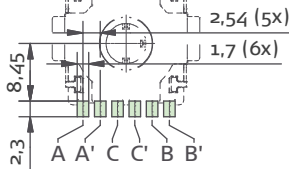
Graycode 16 Pos.
Graycode 16 Pos.

Pos.	Spur / track			
	1	2	4	8
0				
1				
2				
3				
4				
5				
6				
7				
8				
9				
10				
11				
12				
13				
14				
15				

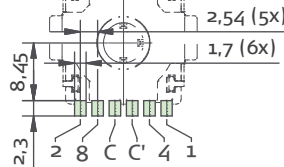
Graycode 18 Pos.
Graycode 18 Pos.

Pos.	Spur / track				
	1	2	4	8	16
0					
1					
2					
3					
4					
5					
6					
7					
8					
9					
10					
11					
12					
13					
14					
15					
16					
17					

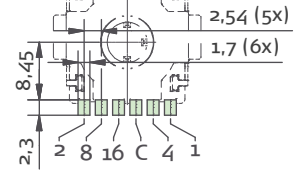
Pinbelegung
pin assignment



Pinbelegung
pin assignment



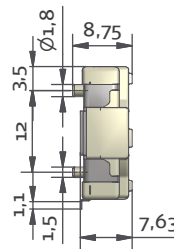
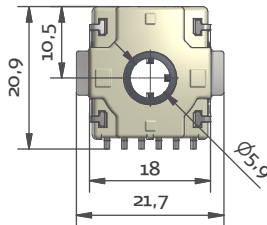
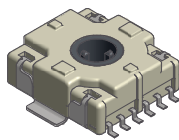
Pinbelegung
pin assignment



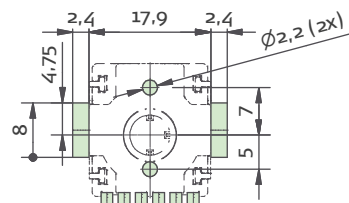
- | | | |
|---|----------------------------|--|
| 1 | in Silber
silver-plated | Inkremental Code, 16 Pos.
incremental code, 16 Pos. |
| 2 | in Gold
gold-plated | |
| 7 | | Graycode, 16 Positions
Graycode, 16 Positions |
| 5 | | |
| 8 | | Graycode, 18 Positions
Graycode, 18 Positions |
| 6 | | |

Schalterausführung | switch version

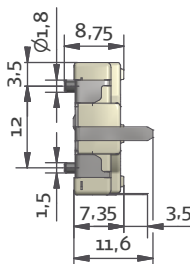
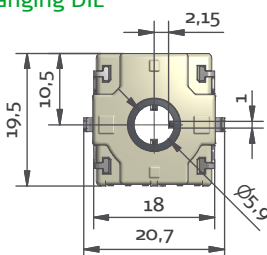
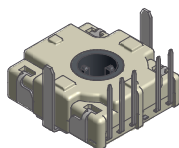
4 Vertikale Betätigung SMD
vertical version SMD



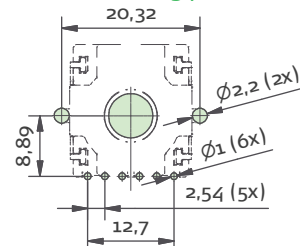
Löt-Pad-Anordnung
SMD soldering pad



5 Vertikal hängend DIL
vertically hanging DIL



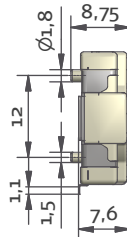
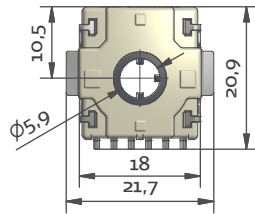
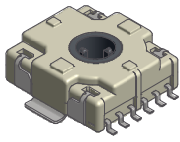
Löt-Pad-Anordnung
SMD soldering pad



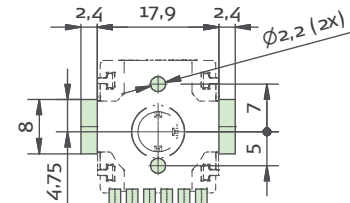
Endschalter | end-switch

0

Ohne Endschalter
without end-switch



Löt-Pad-Anordnung
SMD soldering pad



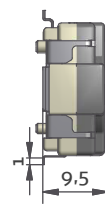
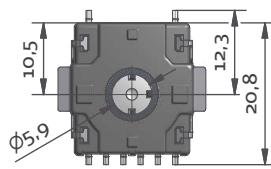
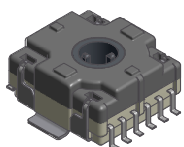
6N Tastkraft
6N actuating force

1

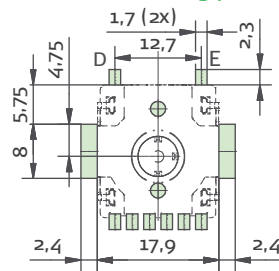
3N Tastkraft
3N actuating force

2

mit Endschalter, ohne durchgehende Öffnung
with end-switch, without throughout opening



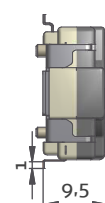
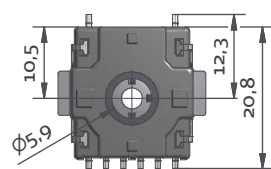
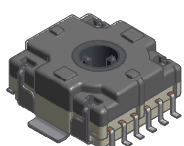
Löt-Pad-Anordnung
SMD soldering pad



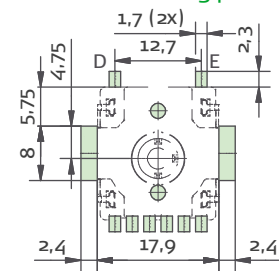
3

4

mit Endschalter, mit durchgehender Öffnung
with end-switch, with throughout opening



Löt-Pad-Anordnung
SMD soldering pad



Rastung | detent

1

Rastung 1,5 Ncm
detent 1,5 Ncm

2

Rastung 2,5 Ncm
detent 2,5 Ncm

5

Rastung 4-5 Ncm
detent 4-5 Ncm

6

Rastung 6 Ncm
detent 6 Ncm

Schaltbild des Endschalters
circuit diagram of the end switch

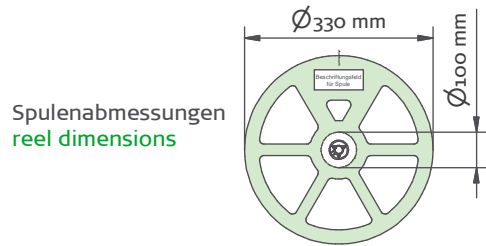
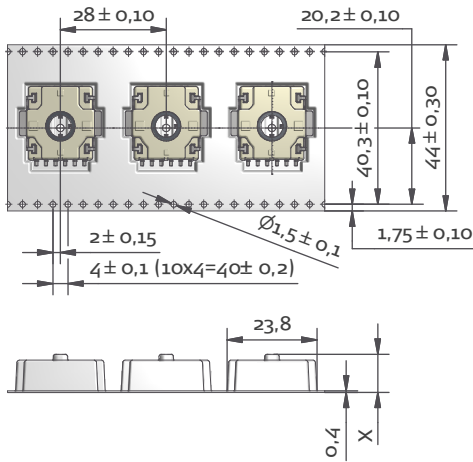
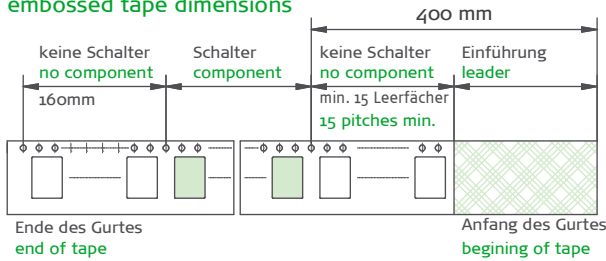


Werkstoffe Materials	Blistergurt	PS	Embossed tape
	Abdeckband	PET	Reel
Abdeckband Top Cover Tape	Zugmoment	min. 10 Nm	Embossed tape pull strength
	Abzugswinkel	165°C - 180°C	Peel of angle
	Abzugsgeschwindigkeit	300 mm / min.	Peel speed
	Abzugskraft	0.1 - 0.7 Nm	Peel force

Verpackung | packaging

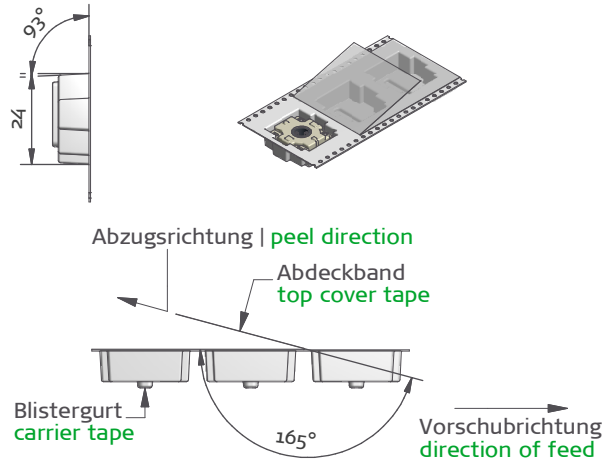
2 Gurt (SMD) | embossed tape (SMD)

Blistergurtabmessungen
embossed tape dimensions

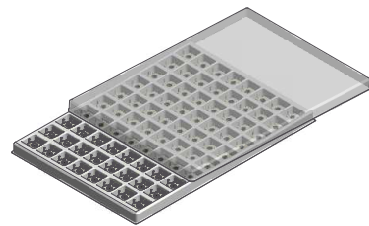
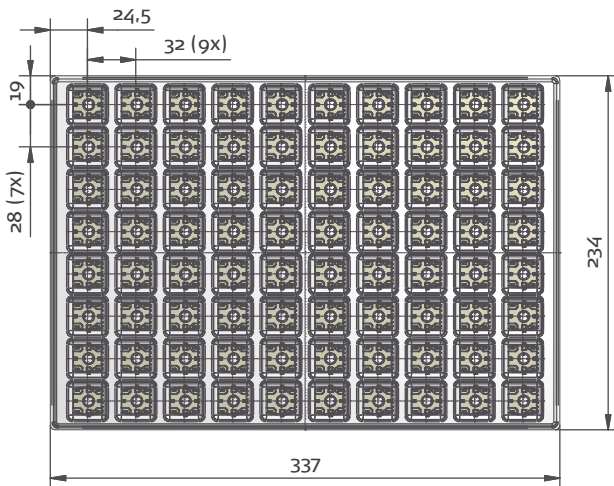


Spulenabmessungen
reel dimensions

Maß "X" dimension "X"	max. Stückzahl number of pieces	Ausführung version
10,1	250	ohne Endschalter without end-switch
12	200	mit Endschalter with end-switch



1 Palette (THT) | palette (THT)



Daten der Palette
properties of the palette

max. Stückzahl number of pieces	Werkstoffe Materials
80	Palette palette PS
	Deckel cover PVC