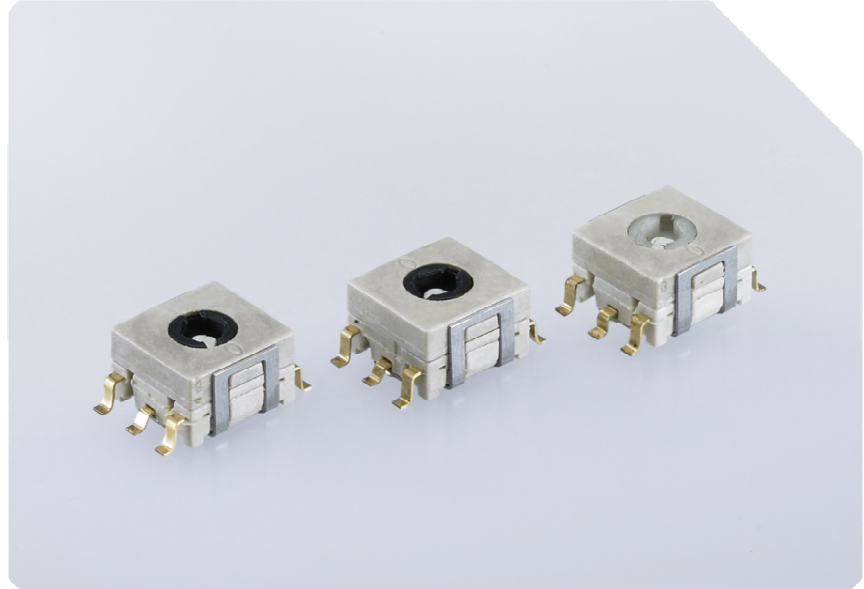


ENCODER | ENCODER

sibalcoSibalco AG • Birmanngasse 8
CH-4009 Basel • Switzerland
T +41 61 264 10 10 • F +41 61 264 10 15
info@sibalco.ch • www.sibalco.com**529****Ausführung**

- Miniatur-2-Bit-Encoder
- 20 Schaltstellungen
- Vertikale Betätigung
- Ohne oder mit Endschalter
- Optional: Betätigungsstößel

Anschlüsse

SMD-Ausführung

Abmessungen

7.1 x 7.3 x 4 mm

529**Construction**

- Miniature 2-bit encoder
- 20 positions
- Operated vertically
- Without or with end switch
- Optional: operating rod

Pining

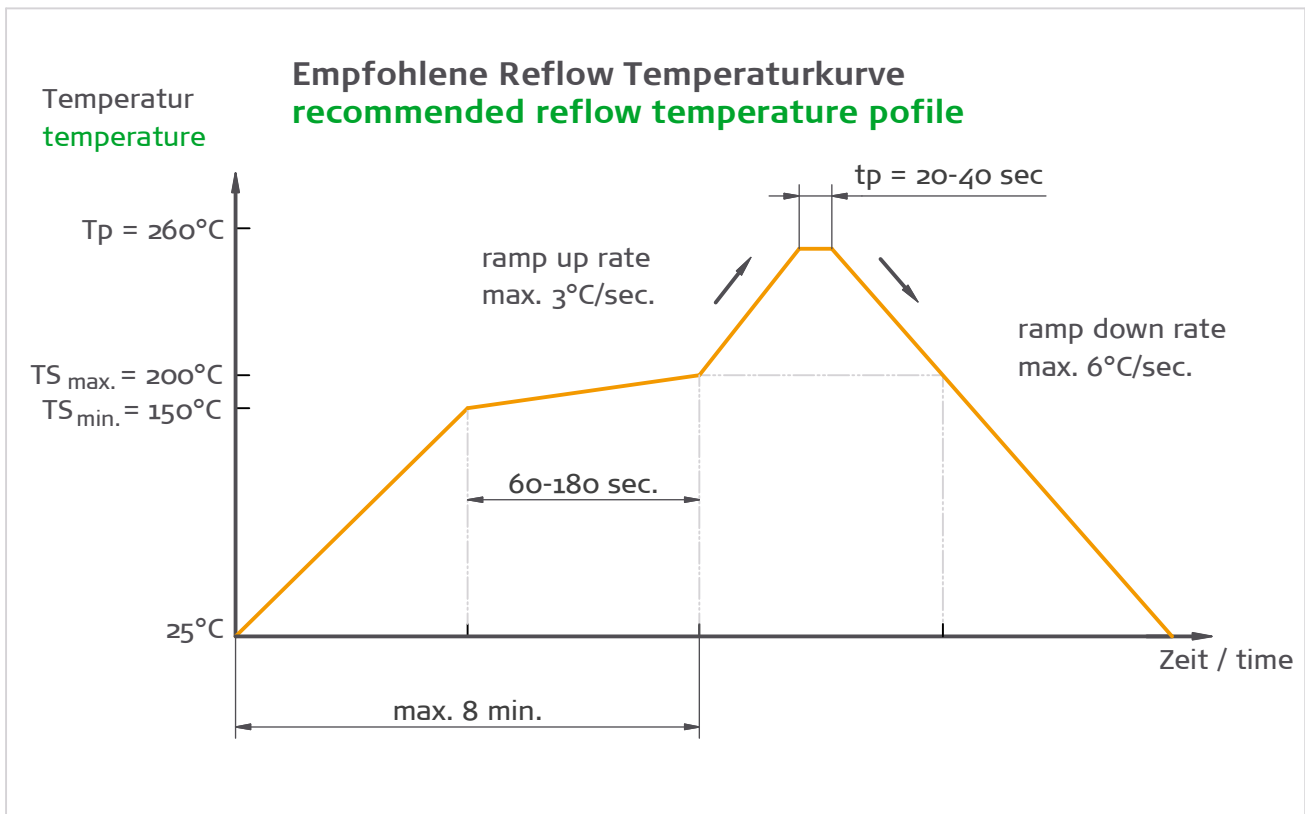
SMD design

Dimensions

7.1 x 7.3 x 4 mm

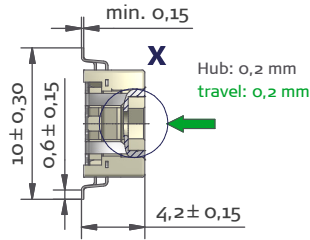
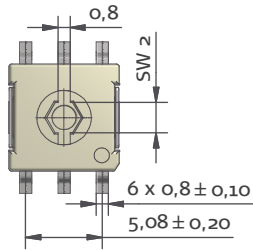
Ausführung Construction	Schaltweise Anschlussmaße Abmessungen	interruptive See drawings See drawings	Function Pining Outline Dimensions
Isolierwerkstoffe Insulation Material	Blechbügel Kontaktträger Betätiger	Nirosta Thermoplastic-UL-94-Vo Thermoplastic-UL-94-Vo	Metal Cover Contact Body Housing
Kontaktwerkstoffe Contact Material	Festkontakte Schaltkontakte Lötanschlüsse	CuBe2 gal. Au flash CuSn6 gal. min. Au flash CuSn6 gal. min. 2 µm Sn	Fixed Contacts Sliding Contacts Pins
Elektrische Daten Electrical Data	Schaltspannung Schaltstrom Übergangswiderstand Isolationswiderstand Kapazität	max. 30 V max. 100 mA < 100 mOhm > 100 MOhm < 2pF	Switching Voltage Switching Current Contact Resistance Insulation Resistance Capacity
Mechanische Daten Mechanical Data	Lebensdauer Encoder Lebensdauer Endschalter Betriebstemperatur Lagertemperatur Lötbedingungen / Art Drehmoment Kraft am Endschalter Vibrationsfestigkeit Dichtheit nach DIN 40050	> 1000 operations > 10000 travels -50 °C to +125 °C -55 °C to +135 °C acc. to IPC/JEDEC J-STD -020C Tab. 4-2 (max. peak temperature +260°) 1 Ncm ±0,3 Ncm 3 N acc. to IEC 60 068-2-6: 50g from 10-500 Hz IP 50	Life Expectancy Encoder Life Expectancy End-switch Operating Temperature Storage Temperature Soldering Time / Conditions Operating Force Force Of The End-switch Vibration Resistance Impermeability DIN 40050

Technische Änderungen vorbehalten. Modifications of technics reserved. Rev. 0 / 09.2011

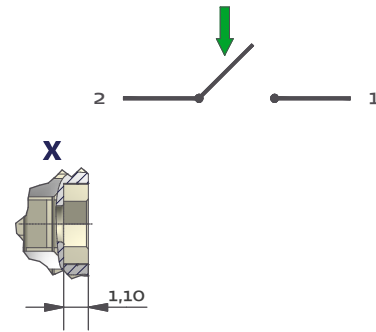


Schalterausführung switch version

- 1 vertikale Betätigung (Standard)
vertical version (standard)

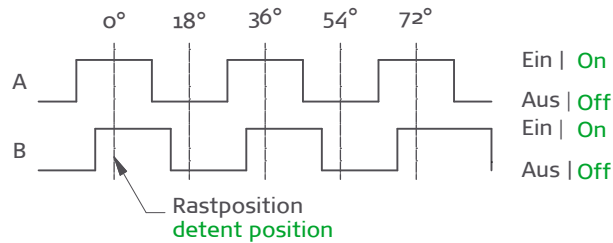


Schaltfunktion Endschalter
function diagram of the end-switch



Kodierung code

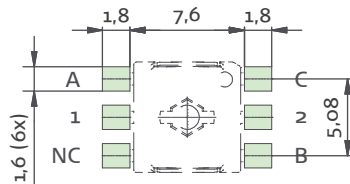
- A 2 Bit-Code, 20 Positions, CW
2 Bit-Code, 20 positions, CW



Anschlussart terminal design

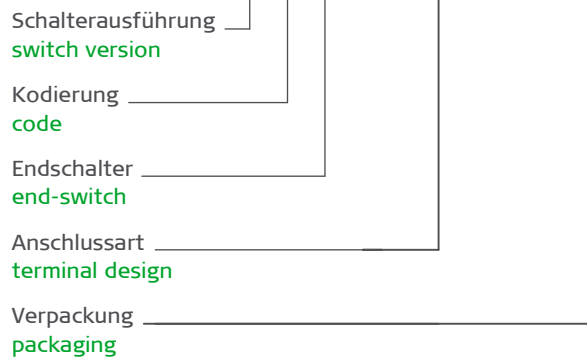
- 2 SMD Gull-wing (Standard)
SMD gull-wing (standard)

Löt-Pad-Anordnung
SMD soldering pad



Bestell-Schlüssel ordering code

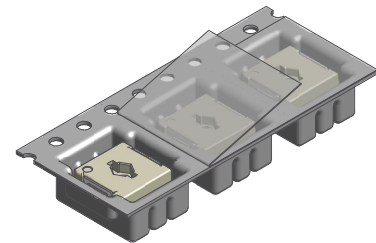
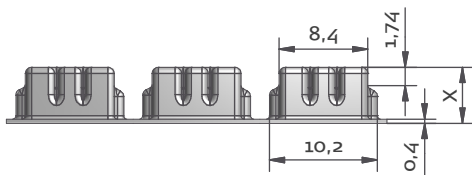
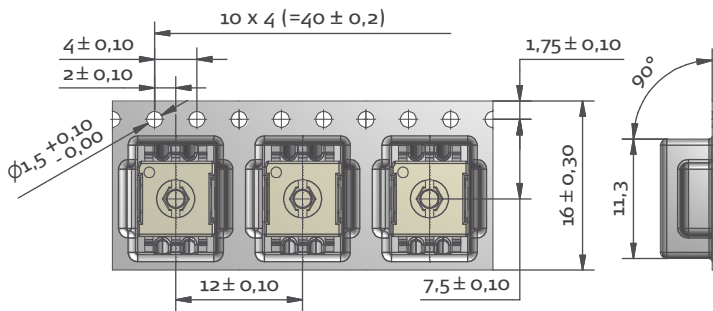
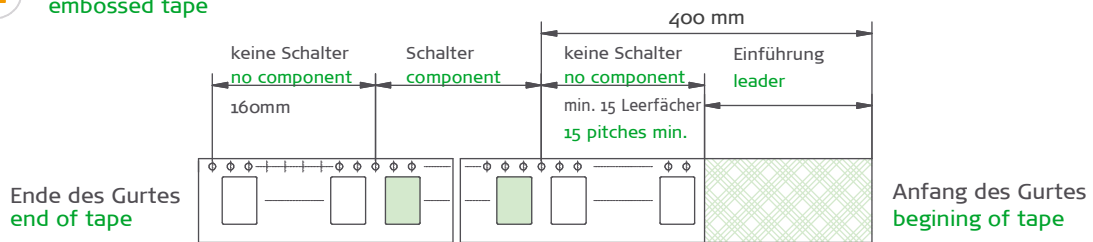
5 2 9 - 0 1 A 1 0 0 2 0 0 0 2



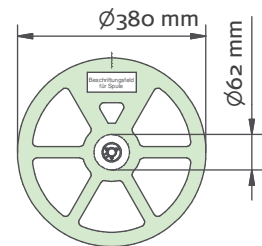
Werkstoffe Materials	Blistergurt	PS	Embossed tape
	Abdeckband	PET	Reel
Abdeckband Top Cover Tape	Zugmoment	min. 10 Nm	Embossed tape pull strength
	Abzugswinkel	165°C - 180°C	Peel of angle
	Abzugsgeschwindigkeit	300 mm / min.	Peel speed
	Abzugskraft	0.1 - 0.7 Nm	Peel force

Verpackung | packaging

2 Gurt embossed tape



Spulenabmessungen
reel dimensions



Maß "X" dimension "X"	max. Stückzahl number of pieces	Ausführung version
5,3	1300	ohne Endschalter without end-switch
5,3	1300	mit Endschalter with end-switch