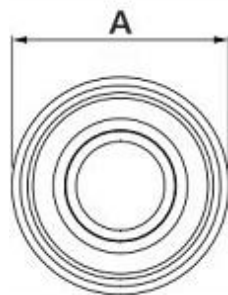
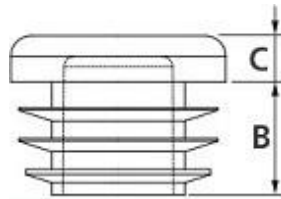


Lamellenstopfen rund

DIM.	TOL.
< 5mm	± 0.2
5 – 20mm	± 0.3
20 – 40mm	± 0.4
40 – 60mm	± 0.5
60 – 100mm	± 0.8
> 100mm	± 1.0



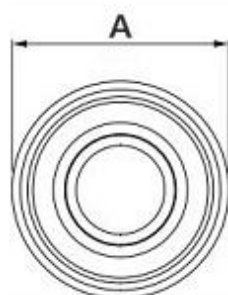
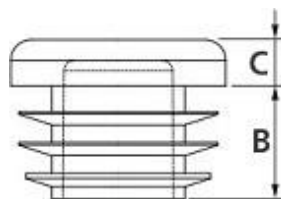
D = min. Rohrwandstärke
E = max. Rohrwandstärke

Artikel	A	B	C	D	E	Farbe
IR107-000100-PES-115	10.0	11.5	3.5	0.8	1.5	schwarz
IR107-000100-PEG-120	10.0	12.0	3.5	1.5	2.0	grau
IR107-000100-PES-120	10.0	12.0	3.5	1.5	2.0	schwarz
IR107-000100-PEW-120	10.0	12.0	3.5	1.5	2.0	weiss
IR107-000120-PES-115	12.0	11.5	3.4	0.8	2.0	schwarz
IR107-000120-PEG-120	12.0	12.0	3.5	1.5	2.0	grau
IR107-000120-PES-120	12.0	12.0	3.5	1.5	2.0	schwarz
IR107-000120-PEW-120	12.0	12.0	3.5	1.5	2.0	weiss
IR107-000130-PES-110	13.0	11.0	4.0	0.8	1.5	schwarz
IR107-000130-PEG-120	13.0	12.0	4.0	0.8	2.0	grau
IR107-000130-PES-120	13.0	12.0	4.0	0.8	2.0	schwarz
IR107-000130-PEW-120	13.0	12.0	4.0	0.8	2.0	weiss
IR107-000140-PES-115	14.0	11.5	4.5	0.5	1.5	schwarz
IR107-000140-PEG-120	14.0	12.0	5.0	1.5	2.0	grau
IR107-000140-PES-120	14.0	12.0	5.0	1.5	2.0	schwarz
IR107-000140-PEW-120	14.0	12.0	5.0	1.5	2.0	weiss
IR107-000150-PES-115	15.0	11.5	4.0	0.8	1.8	schwarz
IR107-000150-PEG-120	15.0	12.0	3.0	0.8	2.0	grau
IR107-000150-PES-120	15.0	12.0	3.0	0.8	2.0	schwarz
IR107-000150-PEW-120	15.0	12.0	3.0	0.8	2.0	weiss
IR107-000160-PES-110	16.0	11.0	5.0	0.8	2.0	schwarz
IR107-000160-PEG-120	16.0	12.0	5.0	0.8	2.0	grau

		TITEL LAMELLENSTOPFEN	
		MATERIAL PE-LD	DATUM 16.04.2021
ARTIKELNUMMER SIEHE OBEN		ZEICHNUNGSNUMMER IR107.16.04.21	
FORMAT A4		REV A	
MASSTAB NTS		EINHEIT mm	
FARBE SIEHE OBEN		TOLERANZEN SIEHE OBEN	
KONTROLLE B.W.		FREIGABE M.S.	

Lamellenstopfen rund

DIM.	TOL.
< 5mm	± 0.2
5 – 20mm	± 0.3
20 – 40mm	± 0.4
40 – 60mm	± 0.5
60 – 100mm	± 0.8
> 100mm	± 1.0



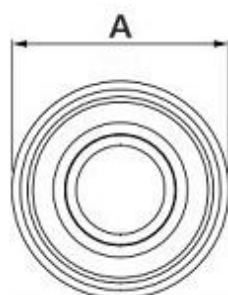
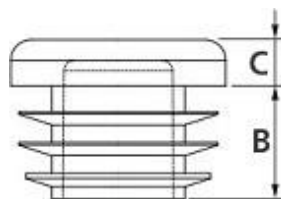
D = min. Rohrwandstärke
E = max. Rohrwandstärke

Artikel	A	B	C	D	E	Farbe
IR107-000160-PES-120	16.0	12.0	5.0	0.8	2.0	schwarz
IR107-000160-PEW-120	16.0	12.0	5.0	0.8	2.0	weiss
IR107-000180-PES-115	18.0	11.5	5.0	0.5	2.0	schwarz
IR107-000180-PEG-120	18.0	12.0	5.0	0.8	2.0	grau
IR107-000180-PES-120	18.0	12.0	5.0	0.8	2.0	schwarz
IR107-000180-PEW-120	18.0	12.0	5.0	0.8	2.0	weiss
IR107-000190-PES-115	19.0	11.5	4.5	1.0	2.0	schwarz
IR107-000190-PEG-120	19.0	12.0	5.0	0.8	2.0	grau
IR107-000190-PES-120	19.0	12.0	5.0	0.8	2.0	schwarz
IR107-000190-PEW-120	19.0	12.0	5.0	0.8	2.0	weiss
IR107-000200-PES-115	20.0	11.5	4.5	1.3	2.5	schwarz
IR107-000200-PEG-120	20.0	12.0	5.0	0.8	2.5	grau
IR107-000200-PES-120	20.0	12.0	5.0	0.8	2.5	schwarz
IR107-000200-PEW-120	20.0	12.0	5.0	0.8	2.5	weiss
IR107-000210-PES-115	21.0	11.5	4.5	0.8	2.0	schwarz
IR107-000210-PEG-120	21.0	12.0	5.0	1.5	2.0	grau
IR107-000210-PES-120	21.0	12.0	5.0	1.5	2.0	schwarz
IR107-000210-PEW-120	21.0	12.0	5.0	1.5	2.0	weiss
IR107-000220-PES-115	22.0	11.5	4.5	0.8	2.3	schwarz
IR107-000220-PEG-120	22.0	12.0	5.0	1.0	3.0	grau
IR107-000220-PES-120	22.0	12.0	5.0	1.0	3.0	schwarz
IR107-000220-PEW-120	22.0	12.0	5.0	1.0	3.0	weiss

		TITEL LAMELLENSTOPFEN	
		MATERIAL PE-LD	DATUM 16.04.2021
ARTIKELNUMMER SIEHE OBEN		ZEICHNUNGSNUMMER IR107.16.04.21	
FORMAT A4		REV A	
MASSTAB NTS		EINHEIT mm	
FARBE SIEHE OBEN		TOLERANZEN SIEHE OBEN	
KONTROLLE B.W.		FREIGABE M.S.	

Lamellenstopfen rund

DIM.	TOL.
< 5mm	± 0.2
5 – 20mm	± 0.3
20 – 40mm	± 0.4
40 – 60mm	± 0.5
60 – 100mm	± 0.8
> 100mm	± 1.0



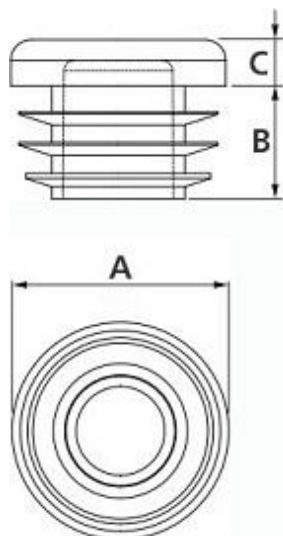
D = min. Rohrwandstärke
E = max. Rohrwandstärke

Artikel	A	B	C	D	E	Farbe
IR107-000230-PES-115	23.0	11.5	4.5	0.8	2.0	schwarz
IR107-000230-PEG-120	23.0	12.0	5.0	1.5	2.0	grau
IR107-000230-PES-120	23.0	12.0	5.0	1.5	2.0	schwarz
IR107-000230-PEW-120	23.0	12.0	5.0	1.5	2.0	weiss
IR107-000240-PES-115	24.0	11.5	5.0	1.0	2.5	schwarz
IR107-000240-PEG-120	24.0	12.0	5.0	1.5	2.0	grau
IR107-000240-PES-120	24.0	12.0	5.0	1.5	2.0	schwarz
IR107-000240-PEW-120	24.0	12.0	5.0	1.5	2.0	weiss
IR107-000250-PES-115	25.0	11.5	4.5	1.0	2.3	schwarz
IR107-000250-PES-110	25.0	11.5	4.5	2.3	3.8	schwarz
IR107-000250-PEG-120	25.0	12.0	5.0	1.0	2.5	grau
IR107-000250-PES-120	25.0	12.0	5.0	1.0	2.5	schwarz
IR107-000250-PEW-120	25.0	12.0	5.0	1.0	2.5	weiss
IR107-000260-PES-115	26.0	11.5	4.0	1.3	2.8	schwarz
IR107-000260-PEG-120	26.0	12.0	5.0	1.5	2.0	grau
IR107-000260-PES-120	26.0	12.0	5.0	1.5	2.0	schwarz
IR107-000260-PEW-120	26.0	12.0	5.0	1.5	2.0	weiss
IR107-000270-PEG-120	27.0	12.0	5.0	1.0	3.0	grau
IR107-000270-PES-120	27.0	12.0	5.0	1.0	3.0	schwarz
IR107-000270-PEW-120	27.0	12.0	5.0	1.0	3.0	weiss
IR107-000280-PEG-120	28.0	12.0	5.0	0.8	2.5	grau
IR107-000280-PES-120	28.0	12.0	5.0	0.8	2.5	schwarz

		TITEL	
		LAMELLENSTOPFEN	
ARTIKELNUMMER		MATERIAL	DATUM
SIEHE OBEN		PE-LD	16.04.2021
ZEICHNUNGSNUMMER		ZEICHNUNG	
IR107.16.04.21		D.T.	
FARBEN		KONTROLLE	
SIEHE OBEN		B.W.	
FORMAT	MASSTAB	EINHEIT	REV
A4	NTS	mm	A
TOLERANZEN		FREIGABE	
SIEHE OBEN		M.S.	

Lamellenstopfen rund

DIM.	TOL.
< 5mm	± 0.2
5 – 20mm	± 0.3
20 – 40mm	± 0.4
40 – 60mm	± 0.5
60 – 100mm	± 0.8
> 100mm	± 1.0



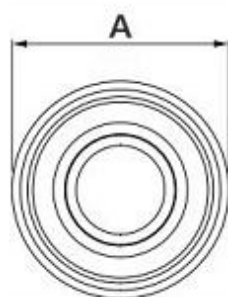
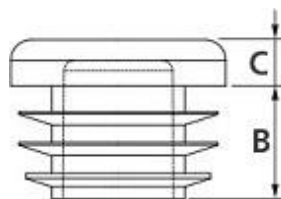
D = min. Rohrwandstärke
E = max. Rohrwandstärke

Artikel	A	B	C	D	E	Farbe
IR107-000280-PEW-120	28.0	12.0	5.0	0.8	2.5	weiss
IR107-000300-PES-110	30.0	11.0	5.0	1.0	3.0	schwarz
IR107-000300-PEG-120	30.0	12.0	5.0	1.5	2.0	grau
IR107-000300-PES-120	30.0	12.0	5.0	1.5	2.0	schwarz
IR107-000300-PEW-120	30.0	12.0	5.0	1.5	2.0	weiss
IR107-000320-PEG-120	32.0	12.0	5.0	0.8	2.5	grau
IR107-000320-PES-120	32.0	12.0	5.0	0.8	2.5	schwarz
IR107-000320-PEW-120	32.0	12.0	5.0	0.8	2.5	weiss
IR107-000340-PES-115	34.0	11.5	5.0	1.0	3.0	schwarz
IR107-000340-PEG-120	34.0	12.0	5.0	1.0	3.0	grau
IR107-000340-PES-120	34.0	12.0	5.0	1.0	3.0	schwarz
IR107-000340-PEW-120	34.0	12.0	5.0	1.0	3.0	weiss
IR107-000350-PES-115	35.0	11.5	4.5	0.8	2.3	schwarz
IR107-000350-PEG-120	35.0	12.0	5.0	1.0	2.5	grau
IR107-000350-PES-120	35.0	12.0	5.0	1.0	2.5	schwarz
IR107-000350-PEW-120	35.0	12.0	5.0	1.0	2.5	weiss
IR107-000360-PES-115	36.0	11.5	4.5	1.3	2.5	schwarz
IR107-000360-PEG-120	36.0	12.0	5.0	1.5	2.0	grau
IR107-000360-PES-120	36.0	12.0	5.0	1.5	2.0	schwarz
IR107-000360-PEW-120	36.0	12.0	5.0	1.5	2.0	weiss
IR107-000370-PES-115	37.0	11.5	5.0	1.0	3.0	schwarz
IR107-000370-PEG-120	37.0	12.0	5.0	1.5	2.0	grau

		TITEL	
		LAMELLENSTOPFEN	
ARTIKELNUMMER		MATERIAL	
SIEHE OBEN		PE-LD	
ZEICHNUNGSNUMMER		DATUM	
IR107.16.04.21		16.04.2021	
FORMAT		ZEICHNUNG	
A4		D.T.	
MASSTAB		KONTROLLE	
NTS		B.W.	
EINHEIT		TOLERANZEN	
mm		SIEHE OBEN	
REV		FREIGABE	
A		M.S.	

Lamellenstopfen rund

DIM.	TOL.
< 5mm	± 0.2
5 – 20mm	± 0.3
20 – 40mm	± 0.4
40 – 60mm	± 0.5
60 – 100mm	± 0.8
> 100mm	± 1.0



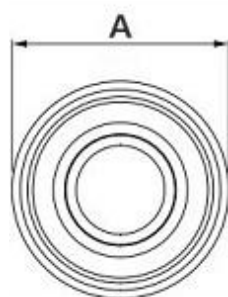
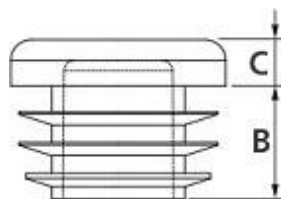
D = min. Rohrwandstärke
E = max. Rohrwandstärke

Artikel	A	B	C	D	E	Farbe
IR107-000370-PES-120	37.0	12.0	5.0	1.5	2.0	schwarz
IR107-000370-PEW-120	37.0	12.0	5.0	1.5	2.0	weiss
IR107-000380-PES-110	38.0	11.0	5.0	1.0	3.0	schwarz
IR107-000380-PEG-120	38.0	12.0	5.0	1.5	3.5	grau
IR107-000380-PES-120	38.0	12.0	5.0	1.5	3.5	schwarz
IR107-000380-PEW-120	38.0	12.0	5.0	1.5	3.5	weiss
IR107-000454-PES-115	40.0	11.5	4.5	2.0	3.0	schwarz
IR107-000400-PES-115	40.0	11.5	5.0	1.0	3.0	schwarz
IR107-000400-PES-110	40.0	11.5	5.0	3.0	5.0	schwarz
IR107-000400-PEG-120	40.0	12.0	5.0	1.0	3.0	grau
IR107-000400-PES-120	40.0	12.0	5.0	1.0	3.0	schwarz
IR107-000400-PEW-120	40.0	12.0	5.0	1.0	3.0	weiss
IR107-000420-PES-115	42.0	11.5	4.5	0.8	1.8	schwarz
IR107-000425-PES-115	42.0	11.5	5.0	0.8	2.5	schwarz
IR107-000326-PES-115	42.0	11.5	5.0	3.0	5.0	schwarz
IR107-000420-PEG-120	42.0	12.0	5.0	0.8	2.5	grau
IR107-000420-PES-120	42.0	12.0	5.0	0.8	2.5	schwarz
IR107-000420-PEW-120	42.0	12.0	5.0	0.8	2.5	weiss
IR107-000430-PEG-120	43.0	12.0	5.0	2.0	2.5	grau
IR107-000430-PES-120	43.0	12.0	5.0	2.0	2.5	schwarz
IR107-000430-PEW-120	43.0	12.0	5.0	2.0	2.5	weiss
IR107-000450-PES-115	45.0	11.5	5.0	1.3	2.0	schwarz

		TITEL LAMELLENSTOPFEN	
		MATERIAL PE-LD	DATUM 16.04.2021
ARTIKELNUMMER SIEHE OBEN		ZEICHNUNGSNUMMER IR107.16.04.21	
FORMAT A4		REV A	
MASSTAB NTS		EINHEIT mm	
FARBE SIEHE OBEN		TOLERANZEN SIEHE OBEN	
KONTROLLE B.W.		FREIGABE M.S.	

Lamellenstopfen rund

DIM.	TOL.
< 5mm	± 0.2
5 – 20mm	± 0.3
20 – 40mm	± 0.4
40 – 60mm	± 0.5
60 – 100mm	± 0.8
> 100mm	± 1.0



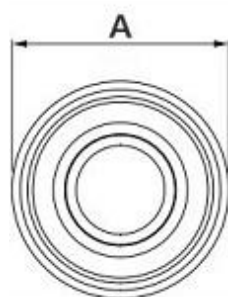
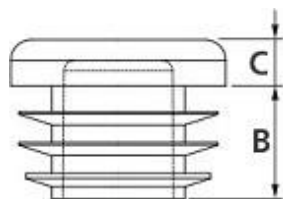
D = min. Rohrwandstärke
E = max. Rohrwandstärke

Artikel	A	B	C	D	E	Farbe
IR107-000450-PEG-120	45.0	12.0	5.0	0.8	3.5	grau
IR107-000450-PES-120	45.0	12.0	5.0	0.8	3.5	schwarz
IR107-000450-PEW-120	45.0	12.0	5.0	0.8	3.5	weiss
IR107-000480-PEG-120	48.0	12.0	5.0	1.2	3.6	grau
IR107-000480-PES-120	48.0	12.0	5.0	1.2	3.6	schwarz
IR107-000480-PEW-120	48.0	12.0	5.0	1.2	3.6	weiss
IR107-000480-PES-180	48.0	18.0	5.0	2.8	2.5	schwarz
IR107-000500-PES-100	50.0	10.0	4.5	1.0	2.0	schwarz
IR107-000500-PES-110	50.0	11.5	5.0	2.5	4.5	schwarz
IR107-000500-PES-115	50.0	11.5	5.0	4.5	6.5	schwarz
IR107-000500-PEG-120	50.0	12.0	5.0	1.0	3.0	grau
IR107-000500-PES-120	50.0	12.0	5.0	1.0	3.0	schwarz
IR107-000500-PEW-120	50.0	12.0	5.0	1.0	3.0	weiss
IR107-000520-PES-145	52.0	14.5	5.0	1.5	3.5	schwarz
IR107-000550-PES-115	55.0	11.5	5.0	1.0	3.0	schwarz
IR107-000550-PEG-120	55.0	12.0	5.0	1.0	3.0	grau
IR107-000550-PES-120	55.0	12.0	5.0	1.0	3.0	schwarz
IR107-000550-PEW-120	55.0	12.0	5.0	1.0	3.0	weiss
IR107-000600-PES-165	60.0	16.5	5.0	3.0	5.0	schwarz
IR107-000600-PES-180	60.0	18.0	5.0	1.5	3.0	schwarz
IR107-000600-PEG-190	60.0	19.0	4.0	1.5	3.0	grau
IR107-000600-PES-190	60.0	19.0	4.0	1.5	3.0	schwarz

		TITEL	
		LAMELLENSTOPFEN	
ARTIKELNUMMER		MATERIAL	DATUM
SIEHE OBEN		PE-LD	16.04.2021
ZEICHNUNGSNUMMER		ZEICHNUNG	
IR107.16.04.21		D.T.	
FARBEN		KONTROLLE	
SIEHE OBEN		B.W.	
FORMAT	MASSTAB	EINHEIT	REV
A4	NTS	mm	A
TOLERANZEN		FREIGABE	
SIEHE OBEN		M.S.	

Lamellenstopfen rund

DIM.	TOL.
< 5mm	± 0.2
5 – 20mm	± 0.3
20 – 40mm	± 0.4
40 – 60mm	± 0.5
60 – 100mm	± 0.8
> 100mm	± 1.0



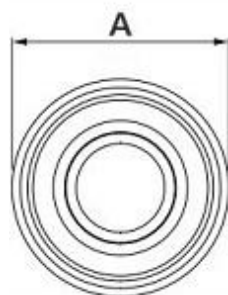
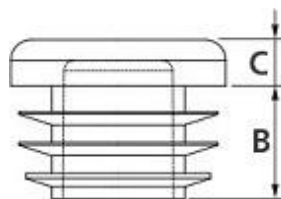
D = min. Rohrwandstärke
E = max. Rohrwandstärke

Artikel	A	B	C	D	E	Farbe
IR107-000600-PEW-190	60.0	19.0	4.0	1.5	3.0	weiss
IR107-000650-PEG-210	65.0	21.0	5.0	1.5	3.5	grau
IR107-000650-PES-210	65.0	21.0	5.0	1.5	3.5	schwarz
IR107-000650-PEW-210	65.0	21.0	5.0	1.5	3.5	weiss
IR107-000700-PEG-210	70.0	21.0	5.0	2.0	4.5	grau
IR107-000700-PES-210	70.0	21.0	5.0	2.0	4.5	schwarz
IR107-000700-PEW-210	70.0	21.0	5.0	2.0	4.5	weiss
IR107-000750-PES-215	75.0	21.5	5.0	1.0	8.5	schwarz
IR107-000760-PES-215	76.0	21.5	5.0	1.6	4.0	schwarz
IR107-000761-PEG-210	76.1	21.0	5.0	1.8	4.0	grau
IR107-000761-PES-210	76.1	21.0	5.0	1.8	4.0	schwarz
IR107-000761-PEW-210	76.1	21.0	5.0	1.8	4.0	weiss
IR107-000800-PEG-210	80.0	21.0	4.0	1.5	3.0	grau
IR107-000800-PES-210	80.0	21.0	4.0	1.5	3.0	schwarz
IR107-000800-PEW-210	80.0	21.0	4.0	1.5	3.0	weiss
IR107-000850-PES-210	85.0	21.0	6.0	1.5	3.5	schwarz
IR107-000889-PEG-210	88.9	21.0	5.0	1.8	4.0	grau
IR107-000889-PES-210	88.9	21.0	5.0	1.8	4.0	schwarz
IR107-000889-PEW-210	88.9	21.0	5.0	1.8	4.0	weiss
IR107-000890-PES-210	89.0	21.0	6.0	1.9	4.1	schwarz
IR107-000900-PES-200	90.0	20.0	5.0	2.5	5.0	schwarz
IR107-000900-PES-210	90.0	21.0	5.0	1.5	4.0	schwarz

		TITEL	
		LAMELLENSTOPFEN	
ARTIKELNUMMER		MATERIAL	DATUM
SIEHE OBEN		PE-LD	16.04.2021
ZEICHNUNGSNUMMER		ZEICHNUNG	
IR107.16.04.21		D.T.	
FARBEN		KONTROLLE	
SIEHE OBEN		B.W.	
FORMAT	MASSTAB	EINHEIT	REV
A4	NTS	mm	A
TOLERANZEN		FREIGABE	
SIEHE OBEN		M.S.	

Lamellenstopfen rund

DIM.	TOL.
< 5mm	± 0.2
5 – 20mm	± 0.3
20 – 40mm	± 0.4
40 – 60mm	± 0.5
60 – 100mm	± 0.8
> 100mm	± 1.0



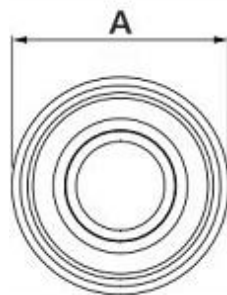
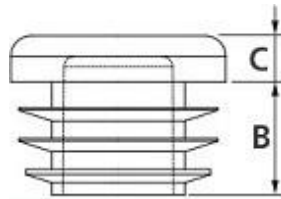
D = min. Rohrwandstärke
E = max. Rohrwandstärke

Artikel	A	B	C	D	E	Farbe
IR107-000100-PEG-280	100.0	28.0	6.0	2.0	4.5	grau
IR107-000100-PES-280	100.0	28.0	6.0	2.0	4.5	schwarz
IR107-000100-PEW-280	100.0	28.0	6.0	2.0	4.5	weiss
IR107-001000-PES-280	100.0	28.0	6.0	2.0	4.5	schwarz
IR107-001080-PES-280	108.0	28.0	6.0	1.9	5.0	schwarz
IR107-000110-PEG-280	110.0	28.0	6.0	2.0	4.5	grau
IR107-000110-PES-280	110.0	28.0	6.0	2.0	4.5	schwarz
IR107-000110-PEW-280	110.0	28.0	6.0	2.0	4.5	weiss
IR107-0001100-PES-280	110.0	28.0	6.0	2.0	4.5	schwarz
IR107-000120-PEG-280	120.0	28.0	6.0	2.0	4.0	grau
IR107-000120-PES-280	120.0	28.0	6.0	2.0	4.0	schwarz
IR107-000120-PEW-280	120.0	28.0	6.0	2.0	4.0	weiss
IR107-001250-PES-340	125.0	34.0	6.0	2.0	6.0	schwarz
IR107-000140-PEG-340	140.0	34.0	6.0	2.0	6.5	grau
IR107-000140-PES-340	140.0	34.0	6.0	2.0	6.5	schwarz
IR107-000140-PEW-340	140.0	34.0	6.0	2.0	6.5	weiss
IR107-000150-PEG-340	150.0	34.0	6.0	2.0	7.0	grau
IR107-000150-PES-340	150.0	34.0	6.0	2.0	7.0	schwarz
IR107-000150-PEW-340	150.0	34.0	6.0	2.0	7.0	weiss
IR107-001500-PES-340	150.0	34.0	6.0	2.0	7.0	schwarz
IR107-000160-PEG-340	160.0	34.0	5.0	5.0	7.0	grau
IR107-000160-PES-340	160.0	34.0	5.0	5.0	7.0	schwarz

		TITEL	
		LAMELLENSTOPFEN	
ARTIKELNUMMER		MATERIAL	DATUM
SIEHE OBEN		PE-LD	16.04.2021
ZEICHNUNGSNUMMER		ZEICHNUNG	
IR107.16.04.21		D.T.	
FARBEN		KONTROLLE	
SIEHE OBEN		B.W.	
FORMAT	MASSTAB	EINHEIT	REV
A4	NTS	mm	A
TOLERANZEN		FREIGABE	
SIEHE OBEN		M.S.	

Lamellenstopfen rund

DIM.	TOL.
< 5mm	± 0.2
5 – 20mm	± 0.3
20 – 40mm	± 0.4
40 – 60mm	± 0.5
60 – 100mm	± 0.8
> 100mm	± 1.0



D = min. Rohrwandstärke
E = max. Rohrwandstärke

Artikel	A	B	C	D	E	Farbe
IR107-000160-PEW-340	160.0	34.0	5.0	5.0	7.0	weiss
IR107-001600-PES-340	160.0	34.0	6.0	2.5	7.0	schwarz
IR107-000168-PEG-340	168.3	34.0	5.0	2.0	6.5	grau
IR107-000168-PES-340	168.3	34.0	5.0	2.0	6.5	schwarz
IR107-000168-PEW-340	168.3	34.0	5.0	2.0	6.5	weiss

				TITEL LAMELLENSTOPFEN	
				MATERIAL PE-LD	DATUM 16.04.2021
ARTIKELNUMMER SIEHE OBEN		ZEICHNUNGSNUMMER IR107.16.04.21		FARBE SIEHE OBEN	
FORMAT A4	MASSTAB NTS	EINHEIT mm	REV A	TOLERANZEN SIEHE OBEN	
				ZEICHNUNG D.T.	
				KONTROLLE B.W.	
				FREIGABE M.S.	